

MID-CONTINENT ENERGY EXCHANGE

Oil & Gas Asset Auctions



Data Packet

Guttersen (WBO)

Royalty Interest in
Weld County, CO

In this Document:

[Lot Summary](#)

[Income and Expenses](#)

[Production](#)

[Maps](#)

[Misc.](#)

[Outgoing Conveyance](#)



Summary

Lot Summary

Lease Name: Guttersen C28 (WBO)

County/State: Weld, CO

Asset Type: Royalty Interest

Legal Description: S/2 Sec 28-4N-64W
(SL: Sec 33-4N-64W; BHL: Sec 28-4N-64W)

API: See below

Decimal Interest: 0.000051874

Net Monthly Income: \$262.48

Operator: Chevron USA (Noble Energy)

| Well Name | API | Owner interest | Conveyed 1/8th |
|-------------------|--------------|----------------|----------------|
| Guttersen C28-725 | 05-123-48933 | 0.00041499 | 0.000051874 |
| Guttersen C28-735 | 05-123-48932 | 0.00041499 | 0.000051874 |
| Guttersen C28-745 | 05-123-48931 | 0.00041499 | 0.000051874 |

Disclaimer: Bidders must conduct their own due diligence prior to bidding at the auction. Bidders shall rely upon their own evaluations of the properties and not upon any representation either oral or written provided here. This is a summary of information provided by the seller to Mid-Continent Energy Exchange.



Income and Expenses

Summary

3 months income info

Net Income: \$787.44

Per Month: \$262.48

| Monthly Revenue | | |
|------------------------|-------------------|-----------------|
| PRODUCTION MONTH | OWNER NET REVENUE | CONVEYED 1/8TH |
| Jun-24 | \$2,289.03 | \$286.13 |
| Jul-24 | \$2,279.31 | \$284.91 |
| Aug-24 | \$1,731.15 | \$216.39 |
| TOTAL | \$6,299.49 | \$787.44 |
| MONTHLY AVERAGE | \$2,099.83 | \$262.48 |

IRS Sec. 1031 EXCHANGE. The Seller intends that the sale of this property will qualify as a tax-deferred exchange under Section 1031 of the Internal Revenue Code. Buyer is hereby notified Seller has assigned its rights as Seller in Mid-Continent Energy Exchange LLC's ("Mid-Continent") online oil and gas marketplace, to Petroleum Strategies, INC. ("PSI"), in an Assignment of Rights in order to effect a like-kind exchange of property under IRS Section 1031 Regulations, as provided for in arrangements made a part of the Mid-Continent listing.

| | | | | | Property | | | | | | Owner | | | |
|------------|---------------|--------------------|----------------|-----------------------|----------|--------|-------|-------|----------------------|-----------------------------------|--------|-------|----------------------|-----------------------------------|
| Sales Date | Interest Type | Tax or Deduct Code | Owner Interest | Distribution Interest | BTU | Volume | Price | Value | Taxes and Deductions | Amount after Taxes and Deductions | Volume | Value | Taxes and Deductions | Amount after Taxes and Deductions |

| | | | | | | | | | | | | | | |
|----------------|----|------|--|------------|--|------------|-------|--------------|-------------|--------------|----------|----------|----------|----------|
| 134448-00005 | | | GUTTERSEN C28-715, 25, 35, 45, State: CO, County: WELD | | | | | | | | | | | |
| OIL | | | | | | | | | | | | | | |
| Jun 24 | RI | CNCO | 0.00165996 | 0.00165996 | | 0.00 | | 0.00 | 19.22 | 19.22 | 0.00 | 0.00 | 0.03 | 0.03 |
| Jun 24 | RI | SCO1 | 0.00165996 | 0.00165996 | | 0.00 | | 0.00 | 0.00 | 0.00 | 0.00 | 0.00 | 0.21 | 0.21 |
| Jun 24 | RI | TRP | 0.00165996 | 0.00165996 | | 0.00 | | 0.00 | (12,808.36) | (12,808.36) | 0.00 | 0.00 | (21.24) | (21.24) |
| Aug 24 | RI | CNCO | 0.00165996 | 0.00165996 | | 89.37 | 76.29 | 6,817.77 | (9.64) | 6,808.13 | 0.15 | 11.32 | (0.01) | 11.31 |
| Aug 24 | RI | MKT | 0.00165996 | 0.00165996 | | 0.00 | | 0.00 | (11.63) | (11.63) | 0.00 | 0.00 | 0.00 | 0.00 |
| Aug 24 | RI | SCO1 | 0.00165996 | 0.00165996 | | 0.00 | | 0.00 | 0.00 | 0.00 | 0.00 | 0.00 | (0.11) | (0.11) |
| Aug 24 | RI | TRP | 0.00165996 | 0.00165996 | | 0.00 | | 0.00 | (393.92) | (393.92) | 0.00 | 0.00 | (0.65) | (0.65) |
| Sep 24 | RI | CNCO | 0.00165996 | 0.00165996 | | 37,542.90 | 70.23 | 2,636,751.41 | (3,815.58) | 2,632,935.83 | 62.32 | 4,376.90 | (6.33) | 4,370.57 |
| Sep 24 | RI | MKT | 0.00165996 | 0.00165996 | | 0.00 | | 0.00 | (4,880.95) | (4,880.95) | 0.00 | 0.00 | 0.00 | 0.00 |
| Sep 24 | RI | SCO1 | 0.00165996 | 0.00165996 | | 0.00 | | 0.00 | 0.00 | 0.00 | 0.00 | 0.00 | (42.22) | (42.22) |
| Sep 24 | RI | TRP | 0.00165996 | 0.00165996 | | 0.00 | | 0.00 | (93,037.99) | (93,037.99) | 0.00 | 0.00 | (154.45) | (154.45) |
| Total Property | | | | | | | | | | | | 4,388.22 | (224.77) | 4,163.45 |
| 134448-00006 | | | GUTTERSEN C28-715, 25, 35, 45, State: CO, County: WELD | | | | | | | | | | | |
| GAS | | | | | | | | | | | | | | |
| Jun 24 | RI | CNCO | 0.00165996 | 0.00165996 | | 0.00 | | 0.00 | (0.40) | (0.40) | 0.00 | 0.00 | 0.00 | 0.00 |
| Jun 24 | RI | TRT | 0.00165996 | 0.00165996 | | 0.00 | | 0.00 | 268.92 | 268.92 | 0.00 | 0.00 | 0.44 | 0.44 |
| Aug 24 | RI | CNCO | 0.00165996 | 0.00165996 | | 176,590.28 | 1.69 | 297,616.35 | (330.21) | 297,286.14 | 293.13 | 494.04 | (0.56) | 493.48 |
| Aug 24 | RI | PRO | 0.00165996 | 0.00165996 | | 0.00 | | 0.00 | (15,214.66) | (15,214.66) | 0.00 | 0.00 | (25.26) | (25.26) |
| Aug 24 | RI | SCO1 | 0.00165996 | 0.00165996 | | 0.00 | | 0.00 | 0.00 | 0.00 | 0.00 | 0.00 | (3.40) | (3.40) |
| Aug 24 | RI | TRP | 0.00165996 | 0.00165996 | | 0.00 | | 0.00 | (75,802.78) | (75,802.78) | 0.00 | 0.00 | (125.82) | (125.82) |
| Aug 24 | RI | TRT | 0.00165996 | 0.00165996 | | 0.00 | | 0.00 | (1,682.41) | (1,682.41) | 0.00 | 0.00 | (2.79) | (2.79) |
| PLANT PRODUCTS | | | | | | | | | | | | | | |
| Aug 24 | RI | CNCO | 0.00165996 | 0.00165996 | | 789,551.88 | 0.47 | 370,129.19 | (424.81) | 369,704.38 | 1,310.62 | 614.42 | (0.68) | 613.74 |
| Aug 24 | RI | MKT | 0.00165996 | 0.00165996 | | 0.00 | | 0.00 | (499.31) | (499.31) | 0.00 | 0.00 | 0.00 | 0.00 |
| Aug 24 | RI | NGLF | 0.00165996 | 0.00165996 | | 0.00 | | 0.00 | (9,230.14) | (9,230.14) | 0.00 | 0.00 | (15.34) | (15.34) |
| Aug 24 | RI | PRO | 0.00165996 | 0.00165996 | | 0.00 | | 0.00 | (86,056.80) | (86,056.80) | 0.00 | 0.00 | (142.88) | (142.88) |
| Aug 24 | RI | SCO1 | 0.00165996 | 0.00165996 | | 0.00 | | 0.00 | 0.00 | 0.00 | 0.00 | 0.00 | (4.15) | (4.15) |
| Aug 24 | RI | TRP | 0.00165996 | 0.00165996 | | 0.00 | | 0.00 | (24,930.72) | (24,930.72) | 0.00 | 0.00 | (41.35) | (41.35) |
| Aug 24 | RI | CNCO | 0.00165996 | 0.00165996 | | 129,407.72 | 1.39 | 179,959.92 | (248.58) | 179,711.34 | 214.81 | 298.75 | (0.42) | 298.33 |
| Aug 24 | RI | MKT | 0.00165996 | 0.00165996 | | 0.00 | | 0.00 | (74.71) | (74.71) | 0.00 | 0.00 | 0.00 | 0.00 |
| Aug 24 | RI | NGLF | 0.00165996 | 0.00165996 | | 0.00 | | 0.00 | (1,396.57) | (1,396.57) | 0.00 | 0.00 | (2.32) | (2.32) |
| Aug 24 | RI | PRO | 0.00165996 | 0.00165996 | | 0.00 | | 0.00 | (18,150.21) | (18,150.21) | 0.00 | 0.00 | (30.12) | (30.12) |
| Aug 24 | RI | SCO1 | 0.00165996 | 0.00165996 | | 0.00 | | 0.00 | 0.00 | 0.00 | 0.00 | 0.00 | (2.60) | (2.60) |
| Aug 24 | RI | TRP | 0.00165996 | 0.00165996 | | 0.00 | | 0.00 | (3,805.28) | (3,805.28) | 0.00 | 0.00 | (6.33) | (6.33) |
| Aug 24 | RI | CNCO | 0.00165996 | 0.00165996 | | 1,353.82 | 1.23 | 1,669.34 | (2.24) | 1,667.10 | 2.25 | 2.77 | 0.00 | 2.77 |
| Aug 24 | RI | PRO | 0.00165996 | 0.00165996 | | 0.00 | | 0.00 | (171.36) | (171.36) | 0.00 | 0.00 | (0.29) | (0.29) |
| Aug 24 | RI | SCO1 | 0.00165996 | 0.00165996 | | 0.00 | | 0.00 | 0.00 | 0.00 | 0.00 | 0.00 | (0.02) | (0.02) |

Represented Unit of Measure: Gas = MCFs, Plant Products = GALs, Oil = BBLs

Generated on Friday, October 25, 2024 7:26 PM



Production Statement

| Owner | | | Operator | | | | | Statement | | | | |
|-------|--|--|--|--|--|--|--|---|--|--|--|--|
| | | | NOBLE ENERGY- INC. P O BOX 4791 HOUSTON, TX 77210-4791 | | | | | Statement Number FORM7_0008204112_20242110 Statement Date 2024-10-21 | | | | |

| Completion ID Property Number | Completion Name API Well Number | Days Status | Oil Prod BBL | Oil Sales BBL | Oil Gravity | Gas Prod MCF | Gas Sales MCF | Gas Sales MMBTU | Gas Fuel MCF | Gas Flared MCF | Gas Vented MCF | Water Prod BBL |
|----------------------------------|------------------------------------|----------------|--------------------|---------------------|----------------|--------------------|---------------------|-----------------------|--------------------|----------------------|----------------------|----------------------|
| CODL | | | | | | | | | | | | |
| Prod Month: Aug 24 | | | | | | | | | | | | |
| 633587/1 000000000633587 | GUTTERSEN C28-74 051234893100 | 31 PR | 16,104.00 | 16,104.00 | 50.10 | 77,797.00 | 77,727.00 | 0.00 | 70.00 | 0.00 | 0.00 | 2,403.00 |
| Total for Aug 24 | | | 16,104.00 | 16,104.00 | | 77,797.00 | 77,727.00 | 0.00 | 70.00 | 0.00 | 0.00 | 2,403.00 |

| | | | | | | | | | | | | | | |
|------------------|-----------------|---------------------------|------|-------|---------|------|----------|-------|------|--------|--------|-------|--------------------|--|
| Statement Number | | FORM7_0008204112_20242110 | | | Owner | | Operator | | | | | | NOBLE ENERGY- INC. | |
| Completion ID | Completion Name | Days | Oil | Oil | Oil | Gas | Gas | Gas | Gas | Gas | Gas | Water | | |
| Property Number | API Well Number | Status | Prod | Sales | Gravity | Prod | Sales | Sales | Fuel | Flared | Vented | Prod | | |
| | | | BBL | BBL | | MCF | MCF | MMBTU | MCF | MCF | MCF | BBL | | |

NB-CD
Prod Month: Aug 24

| | | | | | | | | | | | | | |
|--|--|--|--|--|--|--|--|--|--|--|--|--|--|
| | | | | | | | | | | | | | |
|--|--|--|--|--|--|--|--|--|--|--|--|--|--|

NBRR
Prod Month: Aug 24

| | | | | | | | | | | | | | |
|--|--|--|--|--|--|--|--|--|--|--|--|--|--|
| | | | | | | | | | | | | | |
|--|--|--|--|--|--|--|--|--|--|--|--|--|--|

| | | | | | | | | | | | | |
|------------------|-----------------|---------------------------|------|-------|---------|------|-----------------------------|-------|------|--------|--------|-------|
| Statement Number | | FORM7_0008204112_20242110 | | | Owner | | Operator NOBLE ENERGY- INC. | | | | | |
| Completion ID | Completion Name | Days | Oil | Oil | Oil | Gas | Gas | Gas | Gas | Gas | Gas | Water |
| Property Number | API Well Number | Status | Prod | Sales | Gravity | Prod | Sales | Sales | Fuel | Flared | Vented | Prod |
| | | | BBL | BBL | | MCF | MCF | MMBTU | MCF | MCF | MCF | BBL |

NBRR
Prod Month: Aug 24

| | | | | | | | | | | | | |
|--|--|--|--|--|--|--|--|--|--|--|--|--|
| | | | | | | | | | | | | |
|--|--|--|--|--|--|--|--|--|--|--|--|--|

| | | | | | | | | | | | | |
|-----------------|------------------|----|-----------|-----------|-------|-----------|-----------|------|-------|------|------|----------|
| 633588/1 | GUTTERSEN C28-73 | 31 | 14,533.00 | 14,534.00 | 50.10 | 74,832.00 | 74,765.00 | 0.00 | 67.00 | 0.00 | 0.00 | 2,834.00 |
| 000000000633588 | 051234893200 | PR | | | | | | | | | | |
| 633589/1 | GUTTERSEN C28-72 | 31 | 16,419.00 | 16,419.00 | 50.20 | 73,031.00 | 72,965.00 | 0.00 | 66.00 | 0.00 | 0.00 | 2,155.00 |
| 000000000633589 | 051234893300 | PR | | | | | | | | | | |

| | | | | | | | | | | | | |
|--|--|--|--|--|--|--|--|--|--|--|--|--|
| | | | | | | | | | | | | |
|--|--|--|--|--|--|--|--|--|--|--|--|--|

| | | | | | | | | | | | | | | |
|------------------|-----------------|---------------------------|--------|------|-------|---------|------|----------|-------|------|--------|--------|--------------------|--|
| Statement Number | | FORM7_0008204112_20242110 | | | | Owner | | Operator | | | | | NOBLE ENERGY- INC. | |
| Completion ID | Completion Name | | Days | Oil | Oil | Oil | Gas | Gas | Gas | Gas | Gas | Gas | Water | |
| Property Number | API Well Number | | Status | Prod | Sales | Gravity | Prod | Sales | Sales | Fuel | Flared | Vented | Prod | |
| | | | | BBL | BBL | | MCF | MCF | MMBTU | MCF | MCF | MCF | BBL | |

NBRR
Prod Month: Aug 24

Production Status Codes:

| | | |
|---------------------------|---------------------------|---------------------------|
| AA: ABANDONMENT APPROVED | AB: Abandoned | AD: ABANDONMENT WITNESSED |
| AS: ABANDONMENT SUBMITTED | DA: Dry and Abandoned | DG: Drilling |
| IJ: Injecting | OO: OUT OF SERVICE | PA: Plugged and Abandoned |
| PR: Producing | SI: Shut in | SO: SUSPENDED OPERATIONS |
| TA: Temporarily Abandoned | WO: Waiting on Completion | |

Gas Volumes are reported at 14.73PSI. Oil Volumes are reported at the API standard of 60 degrees

| | | | | |
|--------------|------------|-------|----------|--|
| Check Number | E006606953 | Owner | Operator | CHEVRON U.S.A. INC. (CUSA) ON BEHALF OF THE FOLLOWING ENTITIES |
|--------------|------------|-------|----------|--|

| | | | | | Property | | | | | | Owner | | | |
|------------|---------------|--------------------|----------------|-----------------------|----------|--------|-------|-------|----------------------|-----------------------------------|--------|-------|----------------------|-----------------------------------|
| Sales Date | Interest Type | Tax or Deduct Code | Owner Interest | Distribution Interest | BTU | Volume | Price | Value | Taxes and Deductions | Amount after Taxes and Deductions | Volume | Value | Taxes and Deductions | Amount after Taxes and Deductions |

| | | | | | | | | | | | | | | | | | | | | | | | | | | | | | | | | | | | | | | | | | | | | |
|--------------|--|--|----|--|--|------|--|--|------------|--|--|------------|--|--|--|--|--|------|--|--|--|--|--|------|--|--|------|--|--|------|--|--|------|--|--|------|--|--|------|--|--|------|--|--|
| 134448-00005 | | | | | | | | | | | | | | | GUTTERSEN C28-715, 25, 35, 45, State: CO, County: WELD | | | | | | | | | | | | | | | | | | | | | | | | | | | | | |
| OIL | | | | | | | | | | | | | | | | | | | | | | | | | | | | | | | | | | | | | | | | | | | | |
| May 24 | | | RI | | | CNCO | | | 0.00165996 | | | 0.00165996 | | | | | | 0.00 | | | | | | 0.00 | | | 0.09 | | | 0.09 | | | 0.00 | | | 0.00 | | | 0.00 | | | 0.00 | | |
| | | | | | | | | | | | | | | | | | | | | | | | | | | | | | | | | | | | | | | | | | | | | |

Represented Unit of Measure: Gas = MCFs, Plant Products = GALs, Oil = BBLs

Generated on Thursday, September 26, 2024 7:40 PM

© 2024 Enverus. All rights reserved. Unauthorized use prohibited.

| | | | | | Property | | | | | Owner | | | | |
|--|---------------|--------------------|----------------|-----------------------|----------|------------|-------|--------------|----------------------|-----------------------------------|----------|----------|----------------------|-----------------------------------|
| Sales Date | Interest Type | Tax or Deduct Code | Owner Interest | Distribution Interest | BTU | Volume | Price | Value | Taxes and Deductions | Amount after Taxes and Deductions | Volume | Value | Taxes and Deductions | Amount after Taxes and Deductions |
| May 24 | RI | TRP | 0.00165996 | 0.00165996 | | 0.00 | | 0.00 | (64.21) | (64.21) | 0.00 | 0.00 | (0.11) | (0.11) |
| Jun 24 | RI | CNCO | 0.00165996 | 0.00165996 | | 0.00 | | 0.00 | 0.24 | 0.24 | 0.00 | 0.00 | 0.00 | 0.00 |
| Jun 24 | RI | MKT | 0.00165996 | 0.00165996 | | 0.00 | | 0.00 | (4.92) | (4.92) | 0.00 | 0.00 | 0.00 | 0.00 |
| Jun 24 | RI | TRP | 0.00165996 | 0.00165996 | | 0.00 | | 0.00 | (160.56) | (160.56) | 0.00 | 0.00 | (0.27) | (0.27) |
| Jul 24 | RI | CNCO | 0.00165996 | 0.00165996 | | (350.59) | 80.23 | (28,128.74) | 40.99 | (28,087.75) | (0.58) | (46.68) | 0.08 | (46.60) |
| Jul 24 | RI | MKT | 0.00165996 | 0.00165996 | | 0.00 | | 0.00 | 45.59 | 45.59 | 0.00 | 0.00 | 0.00 | 0.00 |
| Jul 24 | RI | SCO1 | 0.00165996 | 0.00165996 | | 0.00 | | 0.00 | 0.00 | 0.00 | 0.00 | 0.00 | 0.45 | 0.45 |
| Jul 24 | RI | TRP | 0.00165996 | 0.00165996 | | 0.00 | | 0.00 | 813.64 | 813.64 | 0.00 | 0.00 | 1.35 | 1.35 |
| Jul 24 | RI | CNCO | 0.00165996 | 0.00165996 | | 147.42 | 80.23 | 11,827.88 | (17.74) | 11,810.14 | 0.24 | 19.63 | (0.03) | 19.60 |
| Jul 24 | RI | SCO1 | 0.00165996 | 0.00165996 | | 0.00 | | 0.00 | 0.00 | 0.00 | 0.00 | 0.00 | (0.20) | (0.20) |
| Aug 24 | RI | CNCO | 0.00165996 | 0.00165996 | | 46,967.75 | 76.29 | 3,583,027.90 | (5,203.19) | 3,577,824.71 | 77.96 | 5,947.68 | (8.63) | 5,939.05 |
| Aug 24 | RI | MKT | 0.00165996 | 0.00165996 | | 0.00 | | 0.00 | (6,106.28) | (6,106.28) | 0.00 | 0.00 | 0.00 | 0.00 |
| Aug 24 | RI | SCO1 | 0.00165996 | 0.00165996 | | 0.00 | | 0.00 | 0.00 | 0.00 | 0.00 | 0.00 | (57.58) | (57.58) |
| Aug 24 | RI | TRP | 0.00165996 | 0.00165996 | | 0.00 | | 0.00 | (114,241.31) | (114,241.31) | 0.00 | 0.00 | (189.63) | (189.63) |
| Total Property | | | | | | | | | | | | 5,920.63 | (254.57) | 5,666.06 |
| 134448-00006GUTTERSEN C28-715, 25, 35, 45, State: CO, County: WELD | | | | | | | | | | | | | | |
| GAS | | | | | | | | | | | | | | |
| Jul 24 | RI | CNCO | 0.00165996 | 0.00165996 | | 199,216.61 | 2.07 | 411,529.41 | (483.13) | 411,046.28 | 330.69 | 683.12 | (0.79) | 682.33 |
| Jul 24 | RI | PRO | 0.00165996 | 0.00165996 | | 0.00 | | 0.00 | (20,744.92) | (20,744.92) | 0.00 | 0.00 | (34.44) | (34.44) |
| Jul 24 | RI | SCO1 | 0.00165996 | 0.00165996 | | 0.00 | | 0.00 | 0.00 | 0.00 | 0.00 | 0.00 | (5.05) | (5.05) |
| Jul 24 | RI | TRP | 0.00165996 | 0.00165996 | | 0.00 | | 0.00 | (84,828.55) | (84,828.55) | 0.00 | 0.00 | (140.82) | (140.82) |
| Jul 24 | RI | TRT | 0.00165996 | 0.00165996 | | 0.00 | | 0.00 | (1,851.36) | (1,851.36) | 0.00 | 0.00 | (3.08) | (3.08) |
| PLANT PRODUCTS | | | | | | | | | | | | | | |
| Jul 24 | RI | CNCO | 0.00165996 | 0.00165996 | | 883,344.14 | 0.50 | 438,873.79 | (504.75) | 438,369.04 | 1,466.32 | 728.51 | (0.79) | 727.72 |
| Jul 24 | RI | MKT | 0.00165996 | 0.00165996 | | 0.00 | | 0.00 | (559.84) | (559.84) | 0.00 | 0.00 | 0.00 | 0.00 |
| Jul 24 | RI | NGLF | 0.00165996 | 0.00165996 | | 0.00 | | 0.00 | (10,372.87) | (10,372.87) | 0.00 | 0.00 | (17.22) | (17.22) |
| Jul 24 | RI | PRO | 0.00165996 | 0.00165996 | | 0.00 | | 0.00 | (102,440.86) | (102,440.86) | 0.00 | 0.00 | (170.08) | (170.08) |
| Jul 24 | RI | SCO1 | 0.00165996 | 0.00165996 | | 0.00 | | 0.00 | 0.00 | 0.00 | 0.00 | 0.00 | (4.95) | (4.95) |
| Jul 24 | RI | TRP | 0.00165996 | 0.00165996 | | 0.00 | | 0.00 | (27,892.22) | (27,892.22) | 0.00 | 0.00 | (46.30) | (46.30) |
| Jul 24 | RI | CNCO | 0.00165996 | 0.00165996 | | 145,257.86 | 1.43 | 207,456.79 | (285.98) | 207,170.81 | 241.12 | 344.37 | (0.47) | 343.90 |
| Jul 24 | RI | MKT | 0.00165996 | 0.00165996 | | 0.00 | | 0.00 | (84.41) | (84.41) | 0.00 | 0.00 | 0.00 | 0.00 |
| Jul 24 | RI | NGLF | 0.00165996 | 0.00165996 | | 0.00 | | 0.00 | (1,579.65) | (1,579.65) | 0.00 | 0.00 | (2.61) | (2.61) |
| Jul 24 | RI | PRO | 0.00165996 | 0.00165996 | | 0.00 | | 0.00 | (21,364.57) | (21,364.57) | 0.00 | 0.00 | (35.47) | (35.47) |
| Jul 24 | RI | SCO1 | 0.00165996 | 0.00165996 | | 0.00 | | 0.00 | 0.00 | 0.00 | 0.00 | 0.00 | (2.99) | (2.99) |
| Jul 24 | RI | TRP | 0.00165996 | 0.00165996 | | 0.00 | | 0.00 | (4,282.22) | (4,282.22) | 0.00 | 0.00 | (7.12) | (7.12) |
| Jul 24 | RI | CNCO | 0.00165996 | 0.00165996 | | 1,402.32 | 1.22 | 1,712.39 | (2.30) | 1,710.09 | 2.33 | 2.84 | 0.00 | 2.84 |
| Jul 24 | RI | PRO | 0.00165996 | 0.00165996 | | 0.00 | | 0.00 | (176.57) | (176.57) | 0.00 | 0.00 | (0.29) | (0.29) |
| Jul 24 | RI | SCO1 | 0.00165996 | 0.00165996 | | 0.00 | | 0.00 | 0.00 | 0.00 | 0.00 | 0.00 | (0.03) | (0.03) |
| Total Property | | | | | | | | | | | | 1,758.84 | (472.50) | 1,286.34 |

Represented Unit of Measure: Gas = MCFs, Plant Products = GALs, Oil = BBLs

Statement Number FORM7_0008204112_20242009

Owner

Operator NOBLE ENERGY- INC.

| Completion ID | Completion Name | Days | Oil | Oil | Oil | Gas | Gas | Gas | Gas | Gas | Gas | Water |
|-----------------|-----------------|--------|------|-------|---------|------|-------|-------|------|--------|--------|-------|
| Property Number | API Well Number | Status | Prod | Sales | Gravity | Prod | Sales | Sales | Fuel | Flared | Vented | Prod |
| | | | BBL | BBL | | MCF | MCF | MMBTU | MCF | MCF | MCF | BBL |

NB-CD

Prod Month: Jul 24

NBRR

| | | | | | | | | | | | | |
|------------------|-----------------|---------------------------|------|-------|---------|------|-----------------------------|-------|------|--------|--------|-------|
| Statement Number | | FORM7_0008204112_20242009 | | | Owner | | Operator NOBLE ENERGY- INC. | | | | | |
| Completion ID | Completion Name | Days | Oil | Oil | Oil | Gas | Gas | Gas | Gas | Gas | Gas | Water |
| Property Number | API Well Number | Status | Prod | Sales | Gravity | Prod | Sales | Sales | Fuel | Flared | Vented | Prod |
| | | | BBL | BBL | | MCF | MCF | MMBTU | MCF | MCF | MCF | BBL |

NBRR
Prod Month: Jul 24

| | | | | | | | | | | | | |
|--|--|--|--|--|--|--|--|--|--|--|--|--|
| | | | | | | | | | | | | |
|--|--|--|--|--|--|--|--|--|--|--|--|--|

| | | | | | | | | | | | | |
|-----------------|------------------|----|-----------|-----------|-------|-----------|-----------|------|-------|------|------|----------|
| 633588/1 | GUTTERSEN C28-73 | 31 | 19,285.00 | 19,286.00 | 50.20 | 88,444.00 | 88,360.00 | 0.00 | 84.00 | 0.00 | 0.00 | 6,028.00 |
| 000000000633588 | 051234893200 | PR | | | | | | | | | | |
| 633589/1 | GUTTERSEN C28-72 | 31 | 20,295.00 | 20,296.00 | 50.20 | 80,861.00 | 80,784.00 | 0.00 | 77.00 | 0.00 | 0.00 | 4,695.00 |
| 000000000633589 | 051234893300 | PR | | | | | | | | | | |

| | | | | | | | | | | | | |
|--|--|--|--|--|--|--|--|--|--|--|--|--|
| | | | | | | | | | | | | |
|--|--|--|--|--|--|--|--|--|--|--|--|--|

| | | | | | | | | | | | | |
|------------------|-----------------|---------------------------|------|-------|---------|------|-----------------------------|-------|------|--------|--------|-------|
| Statement Number | | FORM7_0008204112_20242009 | | | Owner | | Operator NOBLE ENERGY- INC. | | | | | |
| Completion ID | Completion Name | Days | Oil | Oil | Oil | Gas | Gas | Gas | Gas | Gas | Gas | Water |
| Property Number | API Well Number | Status | Prod | Sales | Gravity | Prod | Sales | Sales | Fuel | Flared | Vented | Prod |
| | | | BBL | BBL | | MCF | MCF | MMBTU | MCF | MCF | MCF | BBL |

NBRR
Prod Month: Jul 24

| | | |
|---------------------------|---------------------------|---------------------------|
| Production Status Codes: | | |
| AA: ABANDONMENT APPROVED | AB: Abandoned | AD: ABANDONMENT WITNESSED |
| AS: ABANDONMENT SUBMITTED | DA: Dry and Abandoned | DG: Drilling |
| IJ: Injecting | OO: OUT OF SERVICE | PA: Plugged and Abandoned |
| PR: Producing | SI: Shut in | SO: SUSPENDED OPERATIONS |
| TA: Temporarily Abandoned | WO: Waiting on Completion | |

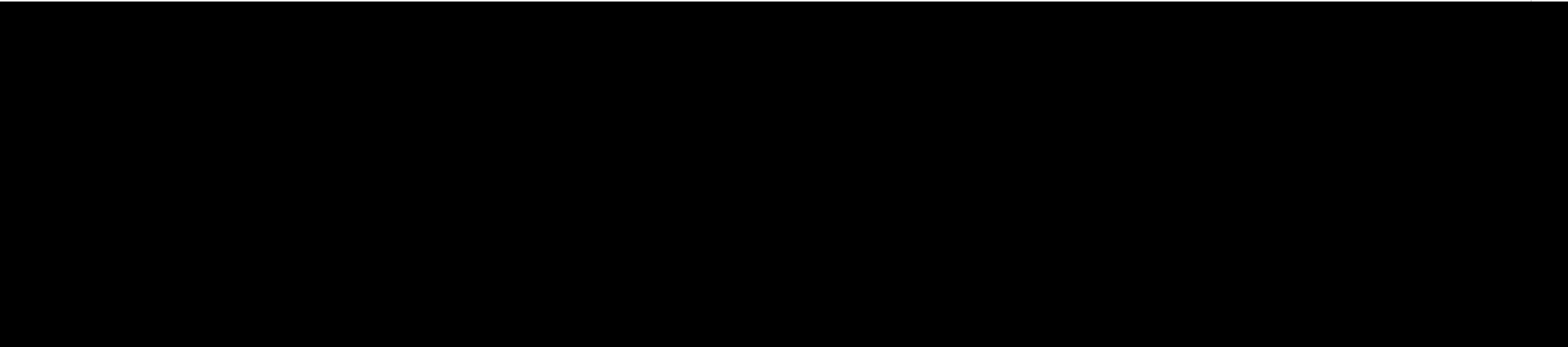
Gas Volumes are reported at 14.73PSI. Oil Volumes are reported at the API standard of 60 degrees

| | | | | | Property | | | | | | Owner | | | |
|------------|---------------|--------------------|----------------|-----------------------|----------|--------|-------|-------|----------------------|-----------------------------------|--------|-------|----------------------|-----------------------------------|
| Sales Date | Interest Type | Tax or Deduct Code | Owner Interest | Distribution Interest | BTU | Volume | Price | Value | Taxes and Deductions | Amount after Taxes and Deductions | Volume | Value | Taxes and Deductions | Amount after Taxes and Deductions |

| | | | | | | | | | | | | | | |
|----------------|----|------|--|------------|--|------------|-------|--------------|--------------|--------------|----------|----------|----------|----------|
| 134448-00005 | | | GUTTERSEN C28-715, 25, 35, 45, State: CO, County: WELD | | | | | | | | | | | |
| OIL | | | | | | | | | | | | | | |
| Jun 24 | RI | CNCO | 0.00165996 | 0.00165996 | | 474.18 | 78.50 | 37,222.68 | (54.21) | 37,168.47 | 0.79 | 61.79 | (0.09) | 61.70 |
| Jun 24 | RI | MKT | 0.00165996 | 0.00165996 | | 0.00 | | 0.00 | (61.65) | (61.65) | 0.00 | 0.00 | 0.00 | 0.00 |
| Jun 24 | RI | SCO1 | 0.00165996 | 0.00165996 | | 0.00 | | 0.00 | 0.00 | 0.00 | 0.00 | 0.00 | (0.60) | (0.60) |
| Jun 24 | RI | TRP | 0.00165996 | 0.00165996 | | 0.00 | | 0.00 | (1,087.01) | (1,087.01) | 0.00 | 0.00 | (1.80) | (1.80) |
| Jun 24 | RI | CNCO | 0.00165996 | 0.00165996 | | 99.71 | 78.50 | 7,827.15 | (11.74) | 7,815.41 | 0.17 | 13.00 | (0.01) | 12.99 |
| Jun 24 | RI | SCO1 | 0.00165996 | 0.00165996 | | 0.00 | | 0.00 | 0.00 | 0.00 | 0.00 | 0.00 | (0.13) | (0.13) |
| Jul 24 | RI | CNCO | 0.00165996 | 0.00165996 | | 59,490.78 | 80.23 | 4,773,099.41 | (6,952.56) | 4,766,146.85 | 98.75 | 7,923.15 | (11.54) | 7,911.61 |
| Jul 24 | RI | MKT | 0.00165996 | 0.00165996 | | 0.00 | | 0.00 | (7,734.40) | (7,734.40) | 0.00 | 0.00 | 0.00 | 0.00 |
| Jul 24 | RI | SCO1 | 0.00165996 | 0.00165996 | | 0.00 | | 0.00 | 0.00 | 0.00 | 0.00 | 0.00 | (76.94) | (76.94) |
| Jul 24 | RI | TRP | 0.00165996 | 0.00165996 | | 0.00 | | 0.00 | (138,066.80) | (138,066.80) | 0.00 | 0.00 | (229.19) | (229.19) |
| Total Property | | | | | | | | | | | | 7,997.94 | (320.30) | 7,677.64 |
| 134448-00006 | | | GUTTERSEN C28-715, 25, 35, 45, State: CO, County: WELD | | | | | | | | | | | |
| GAS | | | | | | | | | | | | | | |
| Jun 24 | RI | CNCO | 0.00165996 | 0.00165996 | | 175,861.57 | 1.58 | 278,489.12 | (299.13) | 278,189.99 | 291.92 | 462.29 | (0.49) | 461.80 |
| Jun 24 | RI | PRO | 0.00165996 | 0.00165996 | | 0.00 | | 0.00 | (14,237.53) | (14,237.53) | 0.00 | 0.00 | (23.63) | (23.63) |
| Jun 24 | RI | SCO1 | 0.00165996 | 0.00165996 | | 0.00 | | 0.00 | 0.00 | 0.00 | 0.00 | 0.00 | (3.07) | (3.07) |
| Jun 24 | RI | TRP | 0.00165996 | 0.00165996 | | 0.00 | | 0.00 | (77,404.86) | (77,404.86) | 0.00 | 0.00 | (128.49) | (128.49) |
| Jun 24 | RI | TRT | 0.00165996 | 0.00165996 | | 0.00 | | 0.00 | (1,661.03) | (1,661.03) | 0.00 | 0.00 | (2.75) | (2.75) |
| PLANT PRODUCTS | | | | | | | | | | | | | | |
| May 24 | RI | CNCO | 0.00165996 | 0.00165996 | | 0.00 | | 11.60 | (0.01) | 11.59 | 0.00 | 0.01 | 0.00 | 0.01 |
| May 24 | RI | NGLF | 0.00165996 | 0.00165996 | | 0.00 | | 0.00 | (20.16) | (20.16) | 0.00 | 0.00 | (0.03) | (0.03) |
| May 24 | RI | PRO | 0.00165996 | 0.00165996 | | 0.00 | | 0.00 | (2.38) | (2.38) | 0.00 | 0.00 | 0.00 | 0.00 |
| May 24 | RI | TRP | 0.00165996 | 0.00165996 | | 0.00 | | 0.00 | (6.97) | (6.97) | 0.00 | 0.00 | (0.01) | (0.01) |
| May 24 | RI | NGLF | 0.00165996 | 0.00165996 | | 0.00 | | (0.15) | (2.95) | (3.10) | 0.00 | 0.00 | (0.01) | (0.01) |
| May 24 | RI | PRO | 0.00165996 | 0.00165996 | | 0.00 | | 0.00 | 0.03 | 0.03 | 0.00 | 0.00 | 0.00 | 0.00 |
| May 24 | RI | TRP | 0.00165996 | 0.00165996 | | 0.00 | | 0.00 | (0.97) | (0.97) | 0.00 | 0.00 | (0.01) | (0.01) |
| Jun 24 | RI | CNCO | 0.00165996 | 0.00165996 | | 780,595.22 | 0.48 | 375,157.12 | (433.36) | 374,723.76 | 1,295.76 | 622.74 | (0.67) | 622.07 |
| Jun 24 | RI | MKT | 0.00165996 | 0.00165996 | | 0.00 | | 0.00 | (503.04) | (503.04) | 0.00 | 0.00 | 0.00 | 0.00 |
| Jun 24 | RI | NGLF | 0.00165996 | 0.00165996 | | 0.00 | | 0.00 | (9,140.24) | (9,140.24) | 0.00 | 0.00 | (15.20) | (15.20) |
| Jun 24 | RI | PRO | 0.00165996 | 0.00165996 | | 0.00 | | 0.00 | (85,252.77) | (85,252.77) | 0.00 | 0.00 | (141.53) | (141.53) |
| Jun 24 | RI | SCO1 | 0.00165996 | 0.00165996 | | 0.00 | | 0.00 | 0.00 | 0.00 | 0.00 | 0.00 | (4.25) | (4.25) |
| Jun 24 | RI | TRP | 0.00165996 | 0.00165996 | | 0.00 | | 0.00 | (24,580.49) | (24,580.49) | 0.00 | 0.00 | (40.80) | (40.80) |
| Jun 24 | RI | CNCO | 0.00165996 | 0.00165996 | | 129,568.73 | 1.40 | 181,963.01 | (251.29) | 181,711.72 | 215.08 | 302.05 | (0.42) | 301.63 |
| Jun 24 | RI | MKT | 0.00165996 | 0.00165996 | | 0.00 | | 0.00 | (78.85) | (78.85) | 0.00 | 0.00 | 0.00 | 0.00 |
| Jun 24 | RI | NGLF | 0.00165996 | 0.00165996 | | 0.00 | | 0.00 | (1,424.33) | (1,424.33) | 0.00 | 0.00 | (2.37) | (2.37) |
| Jun 24 | RI | PRO | 0.00165996 | 0.00165996 | | 0.00 | | 0.00 | (17,979.81) | (17,979.81) | 0.00 | 0.00 | (29.80) | (29.80) |
| Jun 24 | RI | SCO1 | 0.00165996 | 0.00165996 | | 0.00 | | 0.00 | 0.00 | 0.00 | 0.00 | 0.00 | (2.63) | (2.63) |

Represented Unit of Measure: Gas = MCFs, Plant Products = GALs, Oil = BBLs

| | | | | | Property | | | | | | Owner | | | |
|----------------|---------------|--------------------|----------------|-----------------------|----------|----------|-------|----------|----------------------|-----------------------------------|--------|----------|----------------------|-----------------------------------|
| Sales Date | Interest Type | Tax or Deduct Code | Owner Interest | Distribution Interest | BTU | Volume | Price | Value | Taxes and Deductions | Amount after Taxes and Deductions | Volume | Value | Taxes and Deductions | Amount after Taxes and Deductions |
| Jun 24 | RI | TRP | 0.00165996 | 0.00165996 | | 0.00 | | 0.00 | (3,873.14) | (3,873.14) | 0.00 | 0.00 | (6.43) | (6.43) |
| Jun 24 | RI | CNCO | 0.00165996 | 0.00165996 | | 1,485.27 | 1.07 | 1,585.74 | (2.10) | 1,583.64 | 2.47 | 2.63 | 0.00 | 2.63 |
| Jun 24 | RI | PRO | 0.00165996 | 0.00165996 | | 0.00 | | 0.00 | (182.98) | (182.98) | 0.00 | 0.00 | (0.31) | (0.31) |
| Jun 24 | RI | SCO1 | 0.00165996 | 0.00165996 | | 0.00 | | 0.00 | 0.00 | 0.00 | 0.00 | 0.00 | (0.02) | (0.02) |
| Total Property | | | | | | | | | | | | 1,389.72 | (402.92) | 986.80 |



| | Owner Gross Value | Owner Deductions | Owner Taxes | Non Revenue Deductions | Owner Net Value |
|--------------|-------------------|------------------|-------------|------------------------|-----------------|
| Check Total | 25,821.58 | (1,637.82) | (279.46) | | 23,904.30 |
| Year to Date | 137,156.08 | (11,169.69) | (389.12) | | 125,597.27 |

| Legend | | |
|---|--|--------------------------|
| Interest Types | | |
| NR - NON-PARTICIPATING ROYALTY INTEREST | | RI - ROYALTY INTEREST |
| Tax Codes | | |
| CNCO - CONSERVATION TAX | | SVCO - SEVERANCE TAX |
| Deduction Codes | | |
| F - FUEL | | MKT - MARKETING |
| O06 - INTEREST PAID | | PRO - PROCESSING |
| TRT - TREATING | | NGLF - NGL FRACTIONATION |
| | | TRP - TRANSPORTATION |



Production Statement

| Owner | | | Operator | | | | | Statement | | | | |
|-------|--|--|--|--|--|--|--|---|--|--|--|--|
| | | | NOBLE ENERGY- INC. P O BOX 4791 HOUSTON, TX 77210-4791 | | | | | Statement Number FORM7_0008204112_20242108 Statement Date 2024-08-21 | | | | |

| Completion ID Property Number | Completion Name API Well Number | Days Status | Oil Prod BBL | Oil Sales BBL | Oil Gravity | Gas Prod MCF | Gas Sales MCF | Gas Sales MMBTU | Gas Fuel MCF | Gas Flared MCF | Gas Vented MCF | Water Prod BBL |
|----------------------------------|------------------------------------|----------------|--------------------|---------------------|----------------|--------------------|---------------------|-----------------------|--------------------|----------------------|----------------------|----------------------|
| CODL | | | | | | | | | | | | |
| Prod Month: Jun 24 | | | | | | | | | | | | |
| 633587/1 000000000633587 | GUTTERSEN C28-74 051234893100 | 30 PR | 21,583.00 | 21,582.00 | 50.60 | 77,681.00 | 77,586.00 | 0.00 | 95.00 | 0.00 | 0.00 | 8,622.00 |
| Total for Jun 24 | | | 21,583.00 | 21,582.00 | | 77,681.00 | 77,586.00 | 0.00 | 95.00 | 0.00 | 0.00 | 8,622.00 |

Statement Number FORM7_0008204112_20242108

Owner

Operator NOBLE ENERGY- INC.

| Completion ID | Completion Name | Days | Oil | Oil | Oil | Gas | Gas | Gas | Gas | Gas | Gas | Water |
|-----------------|-----------------|--------|------|-------|---------|------|-------|-------|------|--------|--------|-------|
| Property Number | API Well Number | Status | Prod | Sales | Gravity | Prod | Sales | Sales | Fuel | Flared | Vented | Prod |
| | | | BBL | BBL | | MCF | MCF | MMBTU | MCF | MCF | MCF | BBL |

NB-CD

Prod Month: Jun 24

| | | | | | | | | | | | | | |
|------------------|-----------------|---------------------------|------|-------|---------|-------|-------|-----------------------------|------|--------|--------|-------|--|
| Statement Number | | FORM7_0008204112_20242108 | | | | Owner | | Operator NOBLE ENERGY- INC. | | | | | |
| Completion ID | Completion Name | Days | Oil | Oil | Oil | Gas | Gas | Gas | Gas | Gas | Gas | Water | |
| Property Number | API Well Number | Status | Prod | Sales | Gravity | Prod | Sales | Sales | Fuel | Flared | Vented | Prod | |
| | | | BBL | BBL | | MCF | MCF | MMBTU | MCF | MCF | MCF | BBL | |

| | | | | | | | | | | | | |
|-----------------|------------------|----|-----------|-----------|-------|-----------|-----------|------|-------|------|------|----------|
| 633588/1 | GUTTERSEN C28-73 | 30 | 20,456.00 | 20,455.00 | 50.70 | 74,107.00 | 74,017.00 | 0.00 | 90.00 | 0.00 | 0.00 | 9,359.00 |
| 000000000633588 | 051234893200 | PR | | | | | | | | | | |
| 633589/1 | GUTTERSEN C28-72 | 30 | 21,706.00 | 21,705.00 | 50.70 | 72,591.00 | 72,503.00 | 0.00 | 88.00 | 0.00 | 0.00 | 8,331.00 |
| 000000000633589 | 051234893300 | PR | | | | | | | | | | |

| | | | | | | | | | | | | | | | |
|------------------|--|-----------------|---------------------------|--------|--|-------|--|-------|----------|---------|--|-------|--|--------------------|--|
| Statement Number | | | FORM7_0008204112_20242108 | | | Owner | | | Operator | | | | | NOBLE ENERGY- INC. | |
| Completion ID | | Completion Name | | Days | | Oil | | Oil | | Oil | | Gas | | Gas | |
| Property Number | | API Well Number | | Status | | Prod | | Sales | | Gravity | | Prod | | Sales | |
| | | | | | | BBL | | BBL | | | | MCF | | MCF | |
| | | | | | | | | | | | | MMBTU | | MCF | |
| | | | | | | | | | | | | | | Flared | |
| | | | | | | | | | | | | | | Vented | |
| | | | | | | | | | | | | | | MCF | |
| | | | | | | | | | | | | | | Water | |
| | | | | | | | | | | | | | | Prod | |
| | | | | | | | | | | | | | | BBL | |

NBRR
Prod Month: Jun 24

Production Status Codes:

| | | |
|---------------|---------------------------|---------------------------|
| AB: Abandoned | DA: Dry and Abandoned | DG: Drilling |
| IJ: Injecting | PA: Plugged and Abandoned | PR: Producing |
| SI: Shut in | TA: Temporarily Abandoned | WO: Waiting on Completion |

Gas Volumes are reported at 14.73PSI. Oil Volumes are reported at the API standard of 60 degrees

| | | | | | | | | | | | | | | |
|--------------|------------|-------|----------|--|--|--|--|--|--|--|--|--|--|--|
| Check Number | E006596083 | Owner | Operator | CHEVRON U.S.A. INC. (CUSA) ON BEHALF OF THE FOLLOWING ENTITIES | | | | | | | | | | |
|--------------|------------|-------|----------|--|--|--|--|--|--|--|--|--|--|--|

| | | | | | Property | | | | | | Owner | | | |
|------------|---------------|--------------------|----------------|-----------------------|----------|--------|-------|-------|----------------------|-----------------------------------|--------|-------|----------------------|-----------------------------------|
| Sales Date | Interest Type | Tax or Deduct Code | Owner Interest | Distribution Interest | BTU | Volume | Price | Value | Taxes and Deductions | Amount after Taxes and Deductions | Volume | Value | Taxes and Deductions | Amount after Taxes and Deductions |

| | | | | | | | | | | | | | | |
|--------------|----|--|------------|------------|--|-------|-------|----------|----------|----------|------|------|--------|--------|
| 134448-00005 | | GUTTERSEN C28-715, 25, 35, 45, State: CO, County: WELD | | | | | | | | | | | | |
| OIL | | | | | | | | | | | | | | |
| May 24 | RI | | 0.00165996 | 0.00000000 | | 0.00 | | 0.00 | | 0.00 | 0.00 | 0.00 | | (0.08) |
| May 24 | | TAX05 | 0.00165996 | 1.00000000 | | | | | (0.08) | | | | (0.08) | |
| May 24 | RI | TAX | 0.00165996 | 0.00165996 | | 63.54 | 78.76 | 5,004.09 | (7.27) | 4,840.94 | 0.11 | 8.32 | 0.00 | 8.08 |
| May 24 | | DEDUCT | 0.00165996 | 0.00165996 | | | | | (155.88) | | | | (0.24) | |
| | | | | | | | | | | | | | | |

Represented Unit of Measure: Gas = MCFs, Plant Products = GALs, Oil = BBLs

Generated on Thursday, July 25, 2024 6:55 PM

| | | | | | Property | | | | | | Owner | | | |
|---|---------------|--------------------|----------------|-----------------------|----------|------------|-------|--------------|----------------------|-----------------------------------|--------|----------|----------------------|-----------------------------------|
| Sales Date | Interest Type | Tax or Deduct Code | Owner Interest | Distribution Interest | BTU | Volume | Price | Value | Taxes and Deductions | Amount after Taxes and Deductions | Volume | Value | Taxes and Deductions | Amount after Taxes and Deductions |
| May 24 | RI | | 0.00165996 | 0.00000000 | | 0.00 | | 0.00 | | 0.00 | 0.00 | 0.00 | | (0.04) |
| May 24 | | TAX05 | 0.00165996 | 1.00000000 | | | | | (0.04) | | | | (0.04) | |
| May 24 | RI | TAX | 0.00165996 | 0.00165996 | | 29.83 | 78.76 | 2,349.27 | (3.42) | 2,273.00 | 0.05 | 3.89 | (0.03) | 3.73 |
| May 24 | | DEDUCT | 0.00165996 | 0.00165996 | | | | | (72.85) | | | | (0.13) | |
| Jun 24 | RI | | 0.00165996 | 0.00000000 | | 0.00 | | 0.00 | | 0.00 | 0.00 | 0.00 | | (79.91) |
| Jun 24 | | TAX05 | 0.00165996 | 1.00000000 | | | | | (79.91) | | | | (79.91) | |
| Jun 24 | RI | TAX | 0.00165996 | 0.00165996 | | 63,168.14 | 78.50 | 4,958,640.44 | (7,220.74) | 4,798,396.71 | 104.86 | 8,231.16 | (11.99) | 7,978.78 |
| Jun 24 | | DEDUCT | 0.00165996 | 0.00165996 | | | | | (153,022.99) | | | | (240.39) | |
| Total Property | | | | | | | | | | | | 8,243.37 | (332.81) | 7,910.56 |
| 134448-00006 GUTTERSEN C28-715, 25, 35, 45, State: CO, County: WELD | | | | | | | | | | | | | | |
| GAS | | | | | | | | | | | | | | |
| May 24 | RI | | 0.00165996 | 0.00000000 | | 0.00 | | 0.00 | | 0.00 | 0.00 | 0.00 | | (0.59) |
| May 24 | | TAX05 | 0.00165996 | 1.00000000 | | | | | (0.59) | | | | (0.59) | |
| May 24 | RI | TAX | 0.00165996 | 0.00165996 | | 43,998.79 | 1.27 | 55,963.06 | (59.81) | 35,534.10 | 73.04 | 92.90 | (0.10) | 61.20 |
| May 24 | | DEDUCT | 0.00165996 | 0.00165996 | | | | | (20,369.15) | | | | (31.60) | |
| PLANT PRODUCTS | | | | | | | | | | | | | | |
| May 24 | RI | | 0.00165996 | 0.00000000 | | 0.00 | | 0.00 | | 0.00 | 0.00 | 0.00 | | (0.01) |
| May 24 | | TAX05 | 0.00165996 | 1.00000000 | | | | | (0.01) | | | | (0.01) | |
| May 24 | RI | TAX | 0.00165996 | 0.00165996 | | 323.83 | 1.06 | 344.67 | (0.46) | 303.26 | 0.54 | 0.58 | 0.00 | 0.52 |
| May 24 | | DEDUCT | 0.00165996 | 0.00165996 | | | | | (40.95) | | | | (0.06) | |
| May 24 | RI | | 0.00165996 | 0.00000000 | | 0.00 | | 0.00 | | 0.00 | 0.00 | 0.00 | | (1.04) |
| May 24 | | TAX05 | 0.00165996 | 1.00000000 | | | | | (1.04) | | | | (1.04) | |
| May 24 | RI | TAX | 0.00165996 | 0.00165996 | | 191,806.54 | 0.48 | 91,895.84 | (111.11) | 62,499.89 | 318.39 | 152.56 | (0.11) | 109.50 |
| May 24 | | DEDUCT | 0.00165996 | 0.00165996 | | | | | (29,284.84) | | | | (42.95) | |
| May 24 | RI | | 0.00165996 | 0.00000000 | | 0.00 | | 0.00 | | 0.00 | 0.00 | 0.00 | | (0.62) |
| May 24 | | TAX05 | 0.00165996 | 1.00000000 | | | | | (0.62) | | | | (0.62) | |
| May 24 | RI | TAX | 0.00165996 | 0.00165996 | | 30,362.28 | 1.42 | 43,038.67 | (59.47) | 37,251.68 | 50.40 | 71.43 | (0.07) | 61.90 |
| May 24 | | DEDUCT | 0.00165996 | 0.00165996 | | | | | (5,727.52) | | | | (9.46) | |
| Total Property | | | | | | | | | | | | 317.47 | (86.61) | 230.86 |

| | | | | | |
|-------------|-------------------|------------------|-------------|------------------------|-----------------|
| | Owner Gross Value | Owner Deductions | Owner Taxes | Non Revenue Deductions | Owner Net Value |
| Check Total | 9,848.96 | (372.56) | (109.02) | | 9,367.38 |

| | | | | |
|--------------|------------|-------|----------|--|
| Check Number | E006596083 | Owner | Operator | CHEVRON U.S.A. INC. (CUSA) ON BEHALF OF THE FOLLOWING ENTITIES |
|--------------|------------|-------|----------|--|

| Legend | |
|---|----------------------------|
| Interest Types | |
| NR - NON-PARTICIPATING ROYALTY INTEREST | RI - ROYALTY INTEREST |
| Tax Codes | |
| TAX - TAX | TAX05 - COLORADO STATE TAX |
| Deduction Codes | |
| DEDUCT - DEDUCT | |

| | | | | | | | | | | | | |
|------------------|-----------------|---------------------------|------|-------|---------|------|-----------------------------|-------|------|--------|--------|-------|
| Statement Number | | FORM7_0008204112_20241907 | | | Owner | | Operator NOBLE ENERGY- INC. | | | | | |
| Completion ID | Completion Name | Days | Oil | Oil | Oil | Gas | Gas | Gas | Gas | Gas | Gas | Water |
| Property Number | API Well Number | Status | Prod | Sales | Gravity | Prod | Sales | Sales | Fuel | Flared | Vented | Prod |
| | | | BBL | BBL | | MCF | MCF | MMBTU | MCF | MCF | MCF | BBL |

NB-CD
Prod Month: May 24

| | | | | | | | | | | | | |
|----|--|--|--|--|--|--|--|--|--|--|--|--|
| | | | | | | | | | | | | |
| | | | | | | | | | | | | |
| | | | | | | | | | | | | |
| | | | | | | | | | | | | |
| | | | | | | | | | | | | |
| | | | | | | | | | | | | |
| | | | | | | | | | | | | |
| | | | | | | | | | | | | |
| | | | | | | | | | | | | |
| | | | | | | | | | | | | |
| | | | | | | | | | | | | |
| | | | | | | | | | | | | |
| | | | | | | | | | | | | |
| | | | | | | | | | | | | |
| | | | | | | | | | | | | |
| | | | | | | | | | | | | |
| | | | | | | | | | | | | |
| | | | | | | | | | | | | |
| | | | | | | | | | | | | |
| | | | | | | | | | | | | |
| | | | | | | | | | | | | |
| | | | | | | | | | | | | |
| | | | | | | | | | | | | |
| | | | | | | | | | | | | |
| | | | | | | | | | | | | |
| | | | | | | | | | | | | |
| | | | | | | | | | | | | |
| | | | | | | | | | | | | |
| | | | | | | | | | | | | |
| | | | | | | | | | | | | |
| | | | | | | | | | | | | |
| | | | | | | | | | | | | |
| | | | | | | | | | | | | |
| | | | | | | | | | | | | |
| | | | | | | | | | | | | |
| | | | | | | | | | | | | |
| | | | | | | | | | | | | |
| | | | | | | | | | | | | |
| | | | | | | | | | | | | |
| | | | | | | | | | | | | |
| | | | | | | | | | | | | |
| | | | | | | | | | | | | |
| | | | | | | | | | | | | |
| | | | | | | | | | | | | |
| | | | | | | | | | | | | |
| | | | | | | | | | | | | |
| | | | | | | | | | | | | |
| | | | | | | | | | | | | |
| | | | | | | | | | | | | |
| | | | | | | | | | | | | |
| | | | | | | | | | | | | |
| | | | | | | | | | | | | |
| | | | | | | | | | | | | |
| | | | | | | | | | | | | |
| | | | | | | | | | | | | |
| | | | | | | | | | | | | |
| | | | | | | | | | | | | |
| | | | | | | | | | | | | |
| | | | | | | | | | | | | |
| | | | | | | | | | | | | |
| | | | | | | | | | | | | |
| | | | | | | | | | | | | |
| | | | | | | | | | | | | |
| | | | | | | | | | | | | |
| | | | | | | | | | | | | |
| | | | | | | | | | | | | |
| | | | | | | | | | | | | |
| | | | | | | | | | | | | |
| | | | | | | | | | | | | |
| | | | | | | | | | | | | |
| | | | | | | | | | | | | |
| | | | | | | | | | | | | |
| | | | | | | | | | | | | |
| | | | | | | | | | | | | |
| | | | | | | | | | | | | |
| | | | | | | | | | | | | |
| | | | | | | | | | | | | |
| | | | | | | | | | | | | |
| | | | | | | | | | | | | |
| | | | | | | | | | | | | |
| | | | | | | | | | | | | |
| | | | | | | | | | | | | |
| | | | | | | | | | | | | |
| | | | | | | | | | | | | |
| | | | | | | | | | | | | |
| | | | | | | | | | | | | |
| | | | | | | | | | | | | |
| | | | | | | | | | | | | |
| | | | | | | | | | | | | |
| | | | | | | | | | | | | |
| | | | | | | | | | | | | |
| | | | | | | | | | | | | |
| | | | | | | | | | | | | |
| | | | | | | | | | | | | |
| | | | | | | | | | | | | |
| | | | | | | | | | | | | |
| | | | | | | | | | | | | |
| | | | | | | | | | | | | |
| | | | | | | | | | | | | |
| | | | | | | | | | | | | |
| | | | | | | | | | | | | |
| | | | | | | | | | | | | |
| | | | | | | | | | | | | |
| | | | | | | | | | | | | |
| | | | | | | | | | | | | |
| | | | | | | | | | | | | |
| | | | | | | | | | | | | |
| | | | | | | | | | | | | |
| | | | | | | | | | | | | |
| | | | | | | | | | | | | |
| | | | | | | | | | | | | |
| | | | | | | | | | | | | |
| | | | | | | | | | | | | |
| | | | | | | | | | | | | |
| | | | | | | | | | | | | |
| | | | | | | | | | | | | |
| | | | | | | | | | | | | |
| | | | | | | | | | | | | |
| | | | | | | | | | | | | |
| | | | | | | | | | | | | |
| | | | | | | | | | | | | |
| | | | | | | | | | | | | |
| | | | | | | | | | | | | |
| | | | | | | | | | | | | |
| | | | | | | | | | | | | |
| | | | | | | | | | | | | |
| | | | | | | | | | | | | |
| | | | | | | | | | | | | |
| | | | | | | | | | | | | |
| | | | | | | | | | | | | |
| | | | | | | | | | | | | |
| | | | | | | | | | | | | |
| | | | | | | | | | | | | |
| | | | | | | | | | | | | |
| | | | | | | | | | | | | |
| | | | | | | | | | | | | |
| | | | | | | | | | | | | |
| | | | | | | | | | | | | |
| | | | | | | | | | | | | |
| | | | | | | | | | | | | |
| | | | | | | | | | | | | |
| | | | | | | | | | | | | |
| | | | | | | | | | | | | |
| | | | | | | | | | | | | |
| | | | | | | | | | | | | |
| | | | | | | | | | | | | |
| | | | | | | | | | | | | |
| | | | | | | | | | | | | |
| | | | | | | | | | | | | |
| | | | | | | | | | | | | |
| | | | | | | | | | | | | |
| | | | | | | | | | | | | |
| | | | | | | | | | | | | |
| | | | | | | | | | | | | |
| | | | | | | | | | | | | |
| | | | | | | | | | | | | |
| | | | | | | | | | | | | |
| | | | | | | | | | | | | |
| | | | | | | | | | | | | |
| | | | | | | | | | | | | |
| | | | | | | | | | | | | |
| | | | | | | | | | | | | |
| | | | | | | | | | | | | |
| | | | | | | | | | | | | |
| | | | | | | | | | | | | |
| | | | | | | | | | | | | |
| | | | | | | | | | | | | |
| | | | | | | | | | | | | |
| | | | | | | | | | | | | |
| | | | | | | | | | | | | |
| | | | | | | | | | | | | |
| | | | | | | | | | | | | |
| | | | | | | | | | | | | |
| | | | | | | | | | | | | |
| | | | | | | | | | | | | |
| | | | | | | | | | | | | |
| | | | | | | | | | | | | |
| | | | | | | | | | | | | |
| | | | | | | | | | | | | |
| | | | | | | | | | | | | |
| | | | | | | | | | | | | |
| | | | | | | | | | | | | |
| | | | | | | | | | | | | |
| | | | | | | | | | | | | |
| | | | | | | | | | | | | |
| | | | | | | | | | | | | |
| | | | | | | | | | | | | |
| | | | | | | | | | | | | |
| | | | | | | | | | | | | |
| | | | | | | | | | | | | |
| | | | | | | | | | | | | |
| | | | | | | | | | | | | |
| | | | | | | | | | | | | |
| | | | | | | | | | | | | |
| | | | | | | | | | | | | |
| | | | | | | | | | | | | |
| | | | | | | | | | | | | |
| | | | | | | | | | | | | |
| | | | | | | | | | | | | |
| | | | | | | | | | | | | |
| | | | | | | | | | | | | |
| | | | | | | | | | | | | |
| | | | | | | | | | | | | |
| | | | | | | | | | | | | |
| | | | | | | | | | | | | |
| | | | | | | | | | | | | |
| | | | | | | | | | | | | |
| | | | | | | | | | | | | |
| | | | | | | | | | | | | |
| | | | | | | | | | | | | |
| | | | | | | | | | | | | |
| | | | | | | | | | | | | |
| | | | | | | | | | | | | |
| | | | | | | | | | | | | |
| | | | | | | | | | | | | |
| | | | | | | | | | | | | |
| | | | | | | | | | | | | |
| | | | | | | | | | | | | |
| | | | | | | | | | | | | |
| | | | | | | | | | | | | |
| | | | | | | | | | | | | |
| | | | | | | | | | | | | |
| | | | | | | | | | | | | |
| | | | | | | | | | | | | |
| | | | | | | | | | | | | |
| | | | | | | | | | | | | |
| | | | | | | | | | | | | |
| | | | | | | | | | | | | |
| | | | | | | | | | | | | |
| | | | | | | | | | | | | |
| | | | | | | | | | | | | |
| | | | | | | | | | | | | |
| | | | | | | | | | | | | |
| | | | | | | | | | | | | |
| | | | | | | | | | | | | |
| | | | | | | | | | | | | |
| | | | | | | | | | | | | |
| | | | | | | | | | | | | |
| | | | | | | | | | | | | |
| | | | | | | | | | | | | |
| | | | | | | | | | | | | |
| | | | | | | | | | | | | |
| | | | | | | | | | | | | |
| | | | | | | | | | | | | |
| | | | | | | | | | | | | |
| | | | | | | | | | | | | |
| | | | | | | | | | | | | |
| | | | | | | | | | | | | |
| | | | | | | | | | | | | |
| | | | | | | | | | | | | |
| | | | | | | | | | | | | |
| | | | | | | | | | | | | |
| | | | | | | | | | | | | |
| | | | | | | | | | | | | |
| | | | | | | | | | | | | |
| | | | | | | | | | | | | |
| | | | | | | | | | | | | |
| | | | | | | | | | | | | |
| | | | | | | | | | | | | |
| | | | | | | | | | | | | |
| | | | | | | | | | | | | |
| | | | | | | | | | | | | |
| | | | | | | | | | | | | |
| | | | | | | | | | | | | |
| | | | | | | | | | | | | |
| | | | | | | | | | | | | |
| | | | | | | | | | | | | |
| | | | | | | | | | | | | |
| | | | | | | | | | | | | |
| | | | | | | | | | | | | |
| | | | | | | | | | | | | |
| | | | | | | | | | | | | |
| | | | | | | | | | | | | |
| | | | | | | | | | | | | |
| | | | | | | | | | | | | |
| | | | | | | | | | | | | |
| | | | | | | | | | | | | |
| | | | | | | | | | | | | |
| | | | | | | | | | | | | |
| | | | | | | | | | | | | |
| | | | | | | | | | | | | |
| | | | | | | | | | | | | |
| | | | | | | | | | | | | |
| | | | | | | | | | | | | |
| | | | | | | | | | | | | |
| | | | | | | | | | | | | |
| | | | | | | | | | | | | |
| | | | | | | | | | | | | |
| | | | | | | | | | | | | |
| | | | | | | | | | | | | |
| | | | | | | | | | | | | |
| | | | | | | | | | | | | |
| | | | | | | | | | | | | |
| | | | | | | | | | | | | |
| | | | | | | | | | | | | |
| | | | | | | | | | | | | |
| | | | | | | | | | | | | |
| | | | | | | | | | | | | |
| | | | | | | | | | | | | |
| | | | | | | | | | | | | |
| | | | | | | | | | | | | |
| | | | | | | | | | | | | |
| | | | | | | | | | | | | |
| | | | | | | | | | | | | |
| | | | | | | | | | | | | |
| | | | | | | | | | | | | |
| | | | | | | | | | | | | |
| | | | | | | | | | | | | |
| | | | | | | | | | | | | |
| | | | | | | | | | | | | |
| | | | | | | | | | | | | |
| | | | | | | | | | | | | |
| | | | | | | | | | | | | |
| | | | | | | | | | | | | |
| | | | | | | | | | | | | |
| | | | | | | | | | | | | |
| | | | | | | | | | | | | |
| | | | | | | | | | | | | |
| | | | | | | | | | | | | |
| | | | | | | | | | | | | |
| | | | | | | | | | | | | |
| | | | | | | | | | | | | |
| | | | | | | | | | | | | |
| | | | | | | | | | | | | |
| | | | | | | | | | | | | |
| | | | | | | | | | | | | |
| | | | | | | | | | | | | |
| | | | | | | | | | | | | |
| | | | | | | | | | | | | |
| | | | | | | | | | | | | |
| | | | | | | | | | | | | |
| | | | | | | | | | | | | |
| | | | | | | | | | | | | |
| | | | | | | | | | | | | |
| | | | | | | | | | | | | |
| | | | | | | | | | | | | |
| | | | | | | | | | | | | |
| | | | | | | | | | | | | |
| | | | | | | | | | | | | |
| | | | | | | | | | | | | |
| | | | | | | | | | | | | |
| | | | | | | | | | | | | |
| | | | | | | | | | | | | |
| | | | | | | | | | | | | |
| | | | | | | | | | | | | |
| | | | | | | | | | | | | |
| | | | | | | | | | | | | |
| | | | | | | | | | | | | |
| | | | | | | | | | | | | |
| | | | | | | | | | | | | |
| | | | | | | | | | | | | |
| | | | | | | | | | | | | |
| | | | | | | | | | | | | |
| | | | | | | | | | | | | |
| | | | | | | | | | | | | |
| | | | | | | | | | | | | |
| | | | | | | | | | | | | |
| | | | | | | | | | | | | |
| | | | | | | | | | | | | |
| | | | | | | | | | | | | |
| | | | | | | | | | | | | |
| | | | | | | | | | | | | |
| | | | | | | | | | | | | |
| | | | | | | | | | | | | |
| | | | | | | | | | | | | |
| | | | | | | | | | | | | |
| | | | | | | | | | | | | |
| | | | | | | | | | | | | |
| | | | | | | | | | | | | |
| | | | | | | | | | | | | |
| | | | | | | | | | | | | |
| | | | | | | | | | | | | |
| | | | | | | | | | | | | |
| | | | | | | | | | | | | |
| | | | | | | | | | | | | |
| | | | | | | | | | | | | |
| | | | | | | | | | | | | |
| | | | | | | | | | | | | |
| | | | | | | | | | | | | |
| | | | | | | | | | | | | |
| | | | | | | | | | | | | |
| | | | | | | | | | | | | |
| | | | | | | | | | | | | |
| | | | | | | | | | | | | |
| | | | | | | | | | | | | |
| | | | | | | | | | | | | |
| | | | | | | | | | | | | |
| | | | | | | | | | | | | |
| | | | | | | | | | | | | |
| | | | | | | | | | | | | |
| | | | | | | | | | | | | |
| | | | | | | | | | | | | |
| | | | | | | | | | | | | |
| | | | | | | | | | | | | |
| | | | | | | | | | | | | |
| | | | | | | | | | | | | |
| </ | | | | | | | | | | | | |

| | | | | | | | | | | | | |
|--|-----------------|--------|-------|-------|---------|-----------------------------|-------|-------|------|--------|--------|-------|
| Statement Number FORM7_0008204112_20241907 | | | Owner | | | Operator NOBLE ENERGY- INC. | | | | | | |
| Completion ID | Completion Name | Days | Oil | Oil | Oil | Gas | Gas | Gas | Gas | Gas | Gas | Water |
| Property Number | API Well Number | Status | Prod | Sales | Gravity | Prod | Sales | Sales | Fuel | Flared | Vented | Prod |
| | | | BBL | BBL | | MCF | MCF | MMBTU | MCF | MCF | MCF | BBL |

| | | | | | | | | | | | | |
|-----------------|------------------|----|----------|----------|-------|-----------|-----------|------|-------|------|------|----------|
| 633588/1 | GUTTERSEN C28-73 | 15 | 6,082.00 | 6,082.00 | 51.50 | 20,396.00 | 20,361.00 | 0.00 | 35.00 | 0.00 | 0.00 | 6,734.00 |
| 000000000633588 | 051234893200 | PR | | | | | | | | | | |
| 633589/1 | GUTTERSEN C28-72 | 15 | 5,602.00 | 5,602.00 | 51.60 | 18,480.00 | 18,448.00 | 0.00 | 32.00 | 0.00 | 0.00 | 6,265.00 |
| 000000000633589 | 051234893300 | PR | | | | | | | | | | |

Production Status Codes:

| | | |
|---------------|---------------------------|---------------------------|
| AB: Abandoned | DA: Dry and Abandoned | DG: Drilling |
| IJ: Injecting | PA: Plugged and Abandoned | PR: Producing |
| SI: Shut in | TA: Temporarily Abandoned | WO: Waiting on Completion |

Gas Volumes are reported at 14.73PSI. Oil Volumes are reported at the API standard of 60 degrees



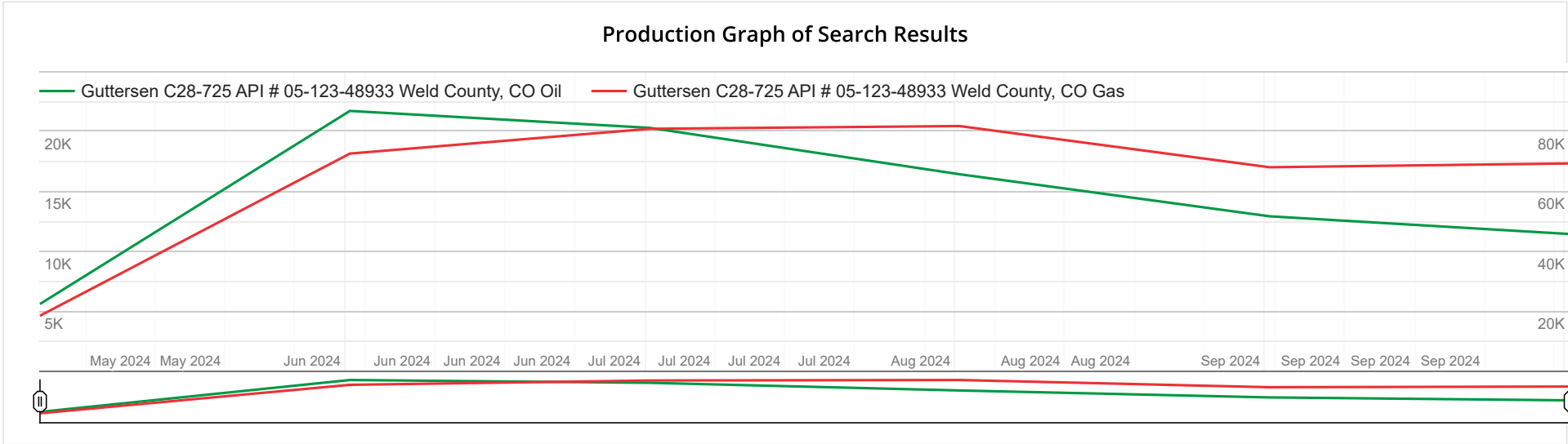
Production



Well Production Search

Home / Well Production

☐ API # contains 05-123-48933



★ Focus Display all Display ▾ [Download](#)

| | | |
|----------|--|----------------|
| Date | Guttersen C28-725 API # 05-123-48933 Weld County, CO | |
| | Oil Prod (BBLs) | Gas Prod (MCF) |
| Oct 2024 | 11,440 | 69,302 |
| Sep 2024 | 12,918 | 68,032 |
| Aug 2024 | 16,425 | 81,772 |
| Jul 2024 | 20,295 | 80,861 |
| Jun 2024 | 21,706 | 72,591 |
| Date | Guttersen C28-725 API # 05-123-48933 Weld County, CO | |

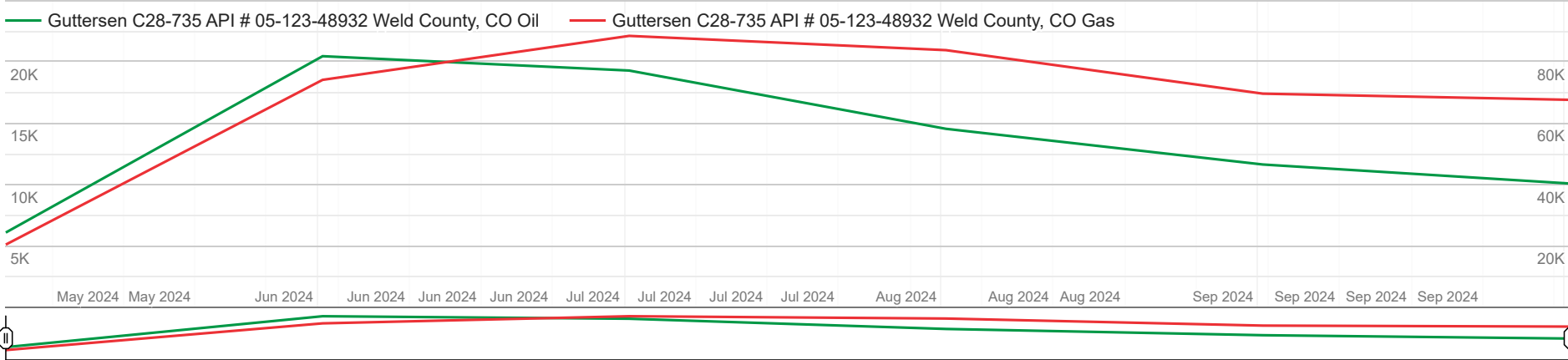
| | | |
|----------|--------------------|----------------|
| Date | Guttersen C28-725 | |
| | API # 05-123-48933 | |
| | Weld County, CO | |
| | Oil Prod (BBLs) | Gas Prod (MCF) |
| May 2024 | 5,602 | 18,480 |
| Apr 2024 | 0 | 0 |
| Mar 2024 | 0 | 0 |
| Feb 2024 | 0 | 0 |
| Jan 2024 | 0 | 0 |
| Dec 2023 | 0 | 0 |
| Nov 2023 | 0 | 0 |
| Oct 2023 | 0 | 0 |
| Sep 2023 | 0 | 0 |
| Aug 2023 | 0 | 0 |
| Jul 2023 | 0 | 0 |
| Jun 2023 | 0 | 0 |
| May 2023 | 0 | 0 |
| Apr 2023 | 0 | 0 |
| Mar 2023 | 0 | 0 |
| Feb 2023 | 0 | 0 |
| Jan 2023 | 0 | 0 |
| Dec 2022 | 0 | 0 |
| Nov 2022 | 0 | 0 |
| Date | Guttersen C28-725 | |
| | API # 05-123-48933 | |
| | Weld County, CO | |

Well Production Search

Home / Well Production

API # contains 05-123-48932

Production Graph of Search Results



★ Focus Display all Display ▾

Download

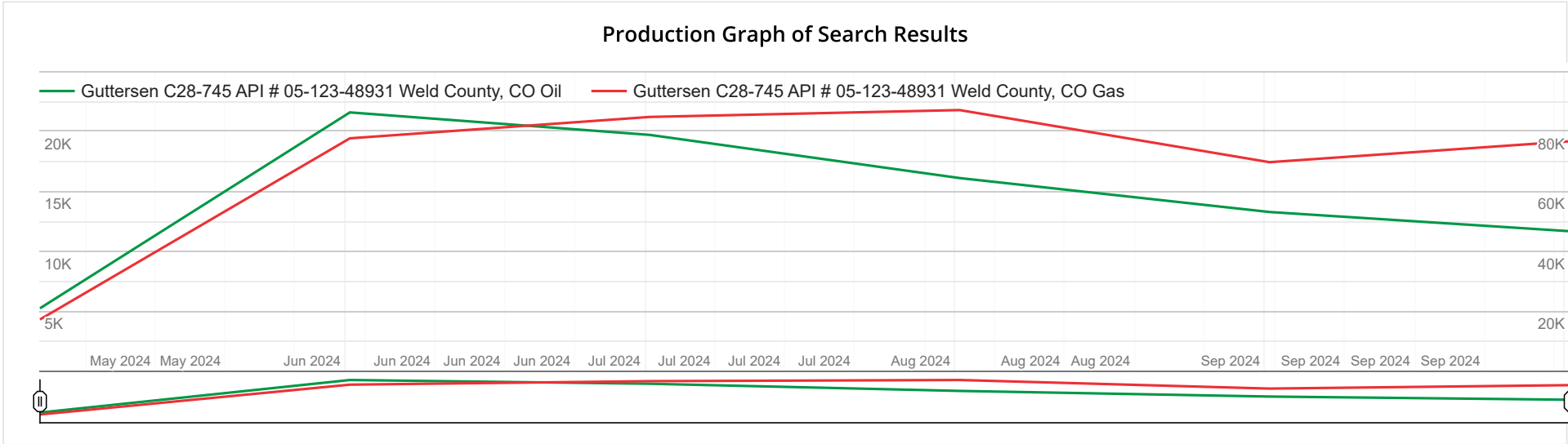
| | | |
|----------|--|----------------|
| Date | Guttersen C28-735 API # 05-123-48932 Weld County, CO | |
| | Oil Prod (BBLs) | Gas Prod (MCF) |
| Oct 2024 | 10,080 | 67,602 |
| Sep 2024 | 11,628 | 69,607 |
| Aug 2024 | 14,536 | 83,790 |
| Jul 2024 | 19,285 | 88,444 |
| Jun 2024 | 20,456 | 74,107 |
| Date | Guttersen C28-735 API # 05-123-48932 Weld County, CO | |

| | | |
|----------|--|----------------|
| Date | Guttersen C28-735 API # 05-123-48932 Weld County, CO | |
| | Oil Prod (BBLs) | Gas Prod (MCF) |
| | | |
| May 2024 | 6,082 | 20,396 |
| Apr 2024 | 0 | 0 |
| Mar 2024 | 0 | 0 |
| Feb 2024 | 0 | 0 |
| Jan 2024 | 0 | 0 |
| Dec 2023 | 0 | 0 |
| Nov 2023 | 0 | 0 |
| Oct 2023 | 0 | 0 |
| Sep 2023 | 0 | 0 |
| Aug 2023 | 0 | 0 |
| Jul 2023 | 0 | 0 |
| Jun 2023 | 0 | 0 |
| May 2023 | 0 | 0 |
| Apr 2023 | 0 | 0 |
| Mar 2023 | 0 | 0 |
| Feb 2023 | 0 | 0 |
| Jan 2023 | 0 | 0 |
| Dec 2022 | 0 | 0 |
| Nov 2022 | 0 | 0 |
| Date | Guttersen C28-735 API # 05-123-48932 Weld County, CO | |

Well Production Search

Home / Well Production

☐ API # contains 05-123-48931



★ Focus

Display all

Display ▾

Download

| | | |
|------|--|----------------|
| Date | Guttersen C28-745 API # 05-123-48931 Weld County, CO | |
| | Oil Prod (BBLs) | Gas Prod (MCF) |
| | Oct 2024 | 11,67576,673 |
| | Sep 2024 | 13,27569,722 |
| | Aug 2024 | 16,10687,109 |
| | Jul 2024 | 19,70684,819 |
| | Jun 2024 | 21,58377,681 |
| Date | Guttersen C28-745 API # 05-123-48931 Weld County, CO | |

| | | |
|-------------|---|-----------------------|
| Date | Guttersen C28-745 API # 05-123-48931 Weld County, CO | |
| | Oil Prod (BBLs) | Gas Prod (MCF) |
| May 2024 | 5,243 | 17,248 |
| Apr 2024 | 0 | 0 |
| Mar 2024 | 0 | 0 |
| Feb 2024 | 0 | 0 |
| Jan 2024 | 0 | 0 |
| Dec 2023 | 0 | 0 |
| Nov 2023 | 0 | 0 |
| Oct 2023 | 0 | 0 |
| Sep 2023 | 0 | 0 |
| Aug 2023 | 0 | 0 |
| Jul 2023 | 0 | 0 |
| Jun 2023 | 0 | 0 |
| May 2023 | 0 | 0 |
| Apr 2023 | 0 | 0 |
| Mar 2023 | 0 | 0 |
| Feb 2023 | 0 | 0 |
| Jan 2023 | 0 | 0 |
| Dec 2022 | 0 | 0 |
| Nov 2022 | 0 | 0 |
| Date | Guttersen C28-745 API # 05-123-48931 Weld County, CO | |



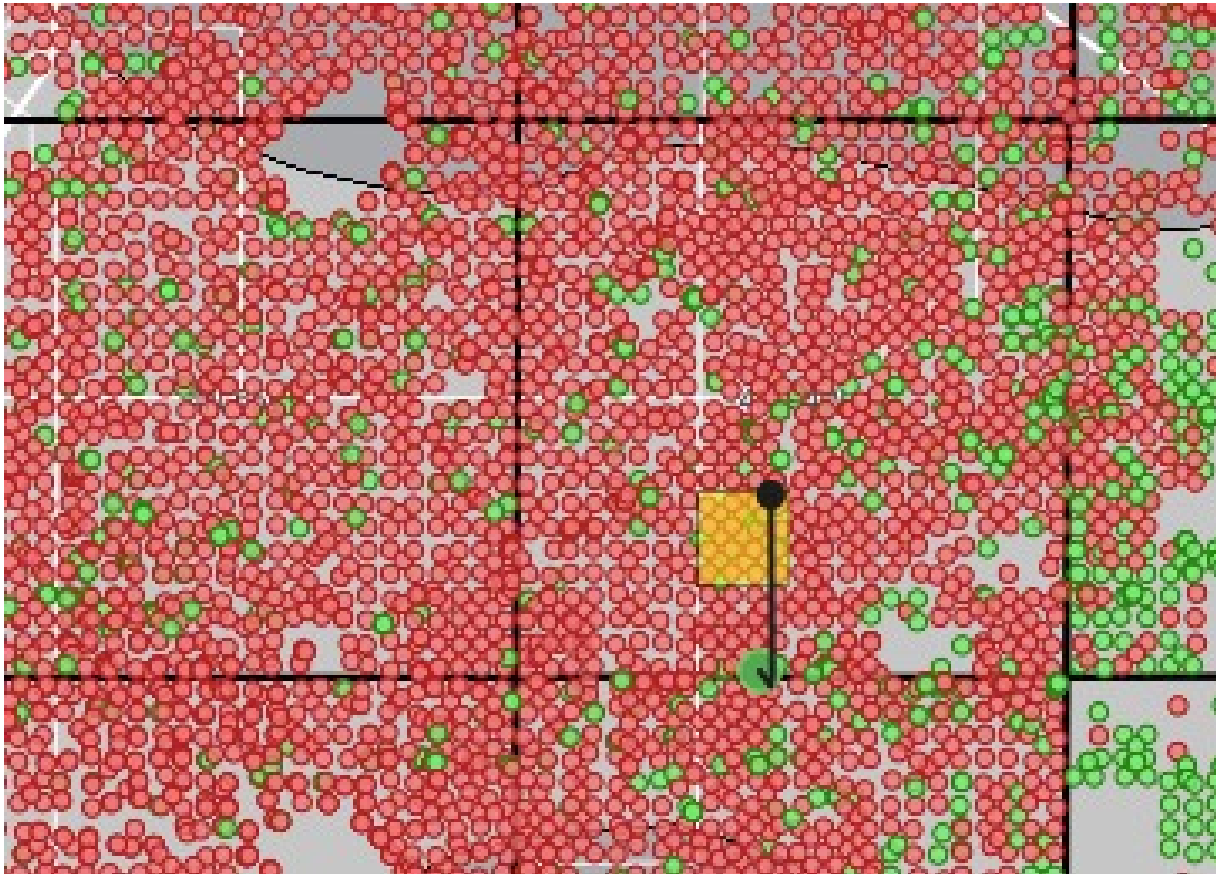
Maps



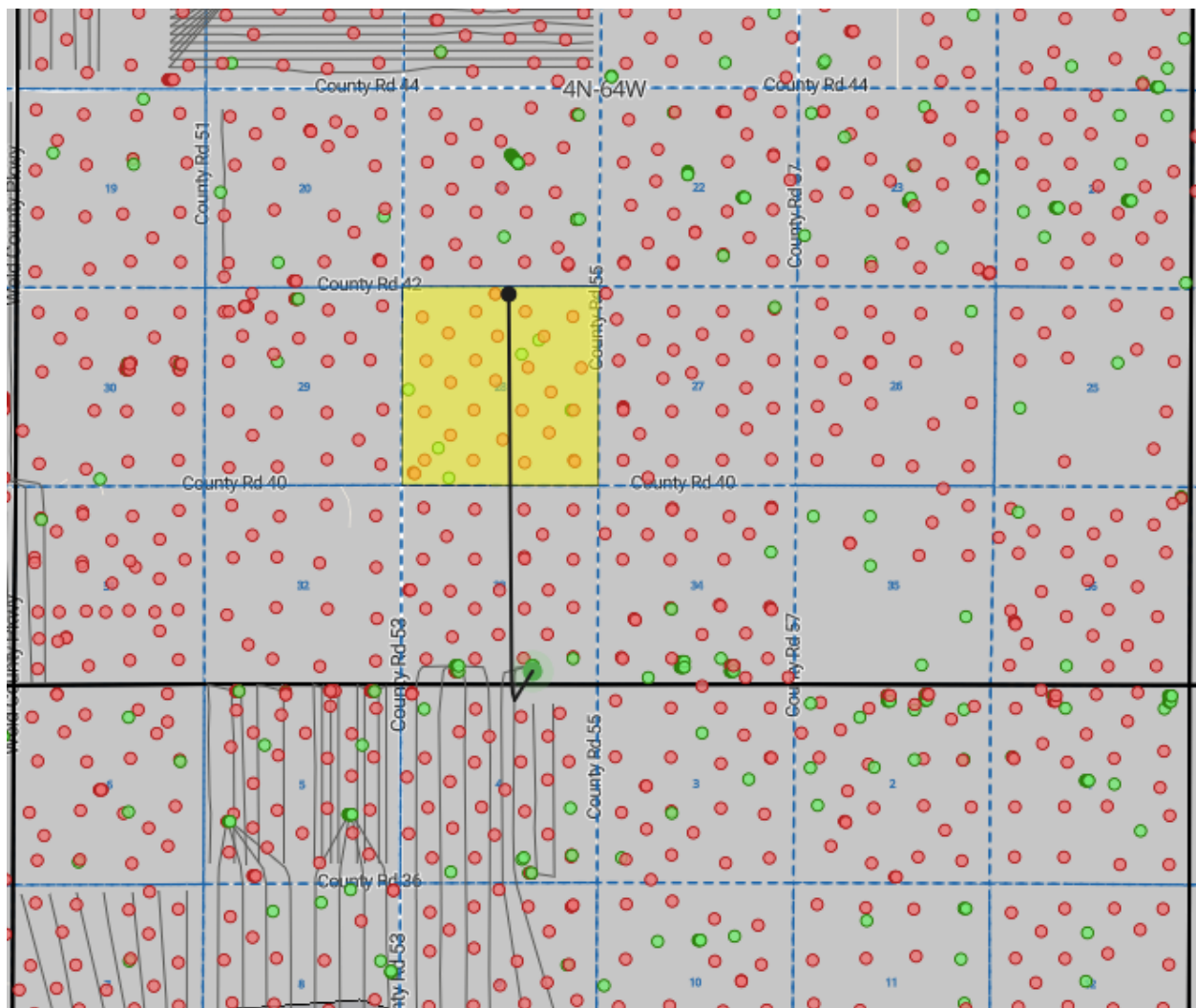
Guttersen Weld, CO



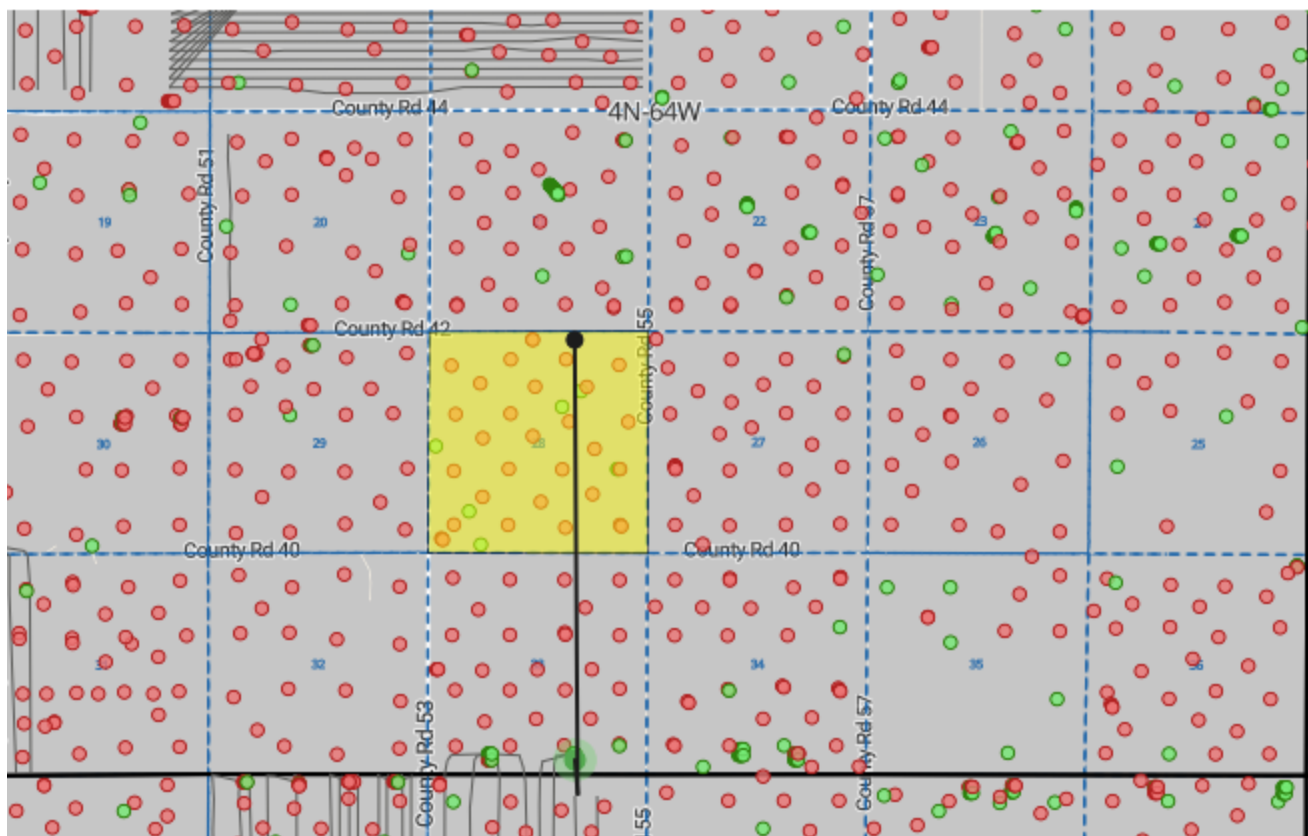
Guttersen Weld, CO



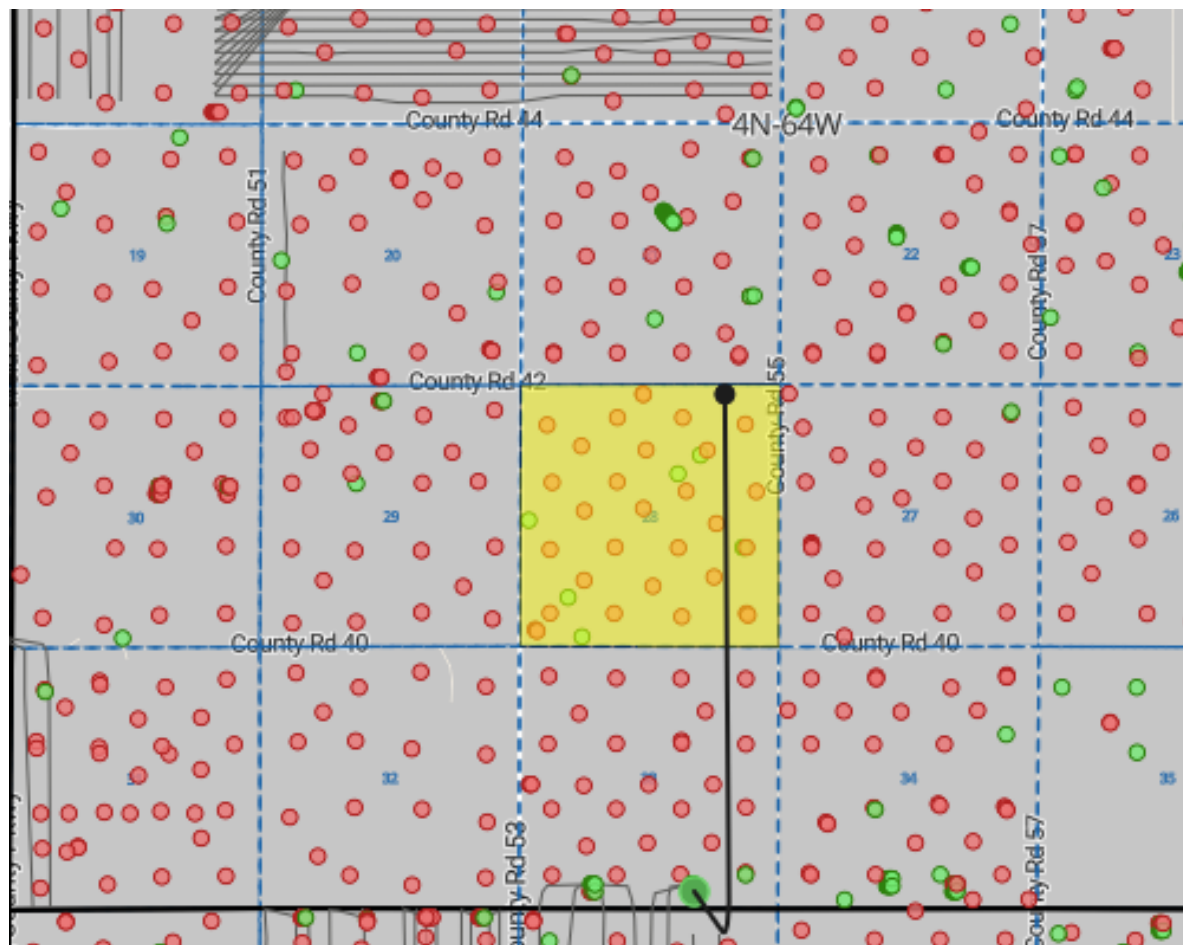
Guttersen C28-745 Weld, CO



Guttersen C28-735 Weld, CO



Guttersen C28-725 Weld, CO





Misc. Info



**ASSIGNMENT OF LANDOWNER ROYALTY INTEREST
(WELLBORE ONLY)**

[REDACTED], hereinafter called Assignor (whether one or more), for and in consideration of the sum of Ten and More Dollars (\$10.00) cash in hand paid and other good and valuable consideration, the receipt and sufficiency of which are hereby acknowledged, does hereby grant, bargain, sell, convey, transfer, assign and deliver unto

hereinafter called Assignee (whether one or more), an undivided **Twenty-Five Percent (25%) of Assignor's right, title and interest** in and to the landowner royalty interest attributable to those certain wells described below, payable under the terms of that certain Oil and Gas Lease dated March 4, 1980, recorded April 18, 1980, under Reception No. 1822531, from Albert Holman, Sr., a married man dealing in his sole and separate property, as lessor, to Energy Minerals Corporation, as lessee, (the "Lease"), attributable to the undivided interest in and to all oil, gas and other minerals owned by Assignor as of November 1, 2018, and acquired under that certain Mineral & Royalty Deed dated effective November 1, 2018, recorded January 15, 2019, under Reception No. 4460174, from HK Resources, LLC, as Grantor, to [REDACTED] as Grantee (the "Mineral Deed"), covering the following described lands situated in Weld County, Colorado (the "Lands") *strictly limited, however, to production from the wells set forth below:*

Township 4 North, Range 64 West, 6th P.M.
Section 28: S/2

The undivided interest in and to the landowner royalty interest hereby conveyed is expressly limited to the landowner royalty interest attributable to the mineral interest of Assignor at the date of the Mineral Deed to production from the following described wells (the "Wells"):

SEE ATTACHED EXHIBIT "A" FOR A DESCRIPTION OF THE WELLS

It is the intent of the Assignor to convey to Assignee (and Assignor does hereby convey to Assignee) an undivided Twenty-Five Percent (25%) of the royalty interest attributable to the mineral interest Assignor owned in the Lands at the effective date of the Mineral Deed covered by the Lease and included in the drilling and production units for the Wells set forth above, *specifically limited to production from the Wells*. No mineral interest in the Lands is conveyed hereby and no royalty interest attributable to other wells (whether currently drilled or drilled in the future) located in drilling and production units including the Lands (or land pooled herewith) are conveyed hereby. The parties hereto agree that this conveyance of Landowner Royalty Interest is expressly limited to production revenues from the Wells attributable to the mineral interest of Assignor at the dates specified above under the terms of the Lease. This assignment is expressly limited to royalties accruing from the Wells under the Lease and in the event of the termination thereof, all interest hereby conveyed shall terminate.

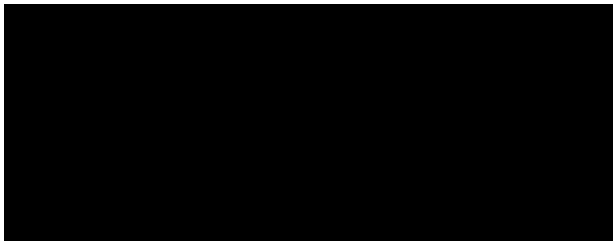
This Assignment does not convey and, to any extent necessary, Assignor excepts and reserves unto itself (i) any and all interest in the minerals in the Lands, and (ii) all landowner royalty interest from any and all other wells whether currently drilled or drilled hereafter on the Lands (or on lands pooled therewith) which include all or part of the Lands in the pooled or designated drilling and production unit.

This sale is made subject to any rights now existing to any lessee or assign under the Lease. Assignee shall bear its proportionate share of all ad valorem, severance, conservation and other similar taxes levied against the interest herein assigned.

Assignor agrees to execute such further assurances as may be requisite for the full and complete enjoyment of the rights herein granted and likewise agrees that Assignee herein shall have the right at any time to redeem for said Assignor by payment, any mortgage, taxes, or other liens that would adversely affect the interests herein conveyed upon default in payment by Assignor, and be subrogated to the rights of the holder thereof.

TO HAVE AND TO HOLD the above described interest with all and singular the rights, privileges, and appurtenances thereunto or in any wise belonging to the said Assignee herein its heirs, successors, personal representatives, administrators, executors, and assigns, and Assignor hereby warrants title as to those parties claiming by through and under Assignee, but not otherwise.

WITNESS my hand this 31st day of October, 2024, but for the purpose of cash sales made effective at 7:00 a.m. on December 1st, 2024.

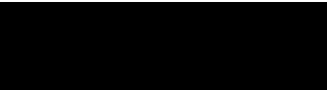


ACKNOWLEDGMENT

STATE OF Illinois)
) ss.
COUNTY OF Cook)

The foregoing instrument was acknowledged before me this 31st day of October, 2024, by  LLC, on behalf of said company.

Witness my hand and official seal.



Notary Public - Signature

March 4 2028
Commission Expiration Date



EXHIBIT “A”

| Well Name | API Number | Surface Location | Drilling Unit |
|-------------------|--------------|------------------|----------------------------------|
| Guttersen C28-725 | 05-123-48933 | SWSE-33-4N-64W | 28-4N-64W: ALL 33-4N-64W: ALL |
| Guttersen C28-735 | 05-123-48932 | SWSE-33-4N-64W | 28-4N-64W: ALL 33-4N-64W: ALL |
| Guttersen C28-745 | 05-123-48931 | SWSE-33-4N-64W | 28-4N-64W: ALL 33-4N-64W: ALL |



Conveyance Document

Please note the following draft deed/assignment has been prepared by the seller in advance of sale. The successful buyer agrees to accept title to the lots pursuant to said deeds or assignments. Seller shall not be obligated or required to modify or change said deeds or assignments unless a correction is required to properly convey the interests being sold.

ASSIGNMENT OF WELLBORE INTEREST

STATE OF COLORADO

§

KNOWN ALL MEN BY THESE PRESENTS:

COUNTY OF WELD

§

§

THAT, [REDACTED], whose address is [REDACTED] ("Assignor"), for Ten Dollars (\$10.00) and other good and valuable consideration, the receipt and sufficiency of which are hereby acknowledged, does hereby grant, bargain, sell, assign, transfer and convey to

hereinafter called "Assignee", whether one or more, an undivided **One-Eighth (12.5% of 100% as of December 1, 2024)** of Assignor's right, title, and interest in and to the landowner royalty interest attributable to those certain wells described below, payable under the terms of that certain Oil and Gas Lease dated March 4, 1980, recorded April 19, 1980, under Reception No. 1822531, from Albert Holman, Sr., a married man dealing in his sole and separate property, as lessor, to Energy Minerals Corporation, as lessee, (the "Lease"), attributable to the undivided interest in and to all oil, gas and other minerals owned by Assignor as of December 1, 2024, and acquired under that certain Assignment of Landowner Royalty Interest (Wellbore Only) dated effective December 1, 2024, recorded December 18, 2024, under Reception No. 5000670, from Hydrocarbon Minerals 3, LLC, as Assignor, to Invest Energy, LLC, as Assignee (the "Assignment"), covering the following described lands situated in Weld County, Colorado (the "Lands") strictly limited, however, to production from the wells set forth below:

Township 4 North, Range 64 West, 6th P.M.
Section 28: S/2

The undivided interest in and to the landowner royalty interest hereby conveyed is expressly limited to the landowner royalty interest attributable to the mineral interest of Assignor at the date of the Assignment to production from the following described wells (the "Wells"):

SEE ATTACHED EXHIBIT "A" FOR A DESCRIPTION OF THE WELLS

It is the intent of the Assignor to convey to Assignee (and Assignor does hereby convey to Assignee) an undivided **One-Eighth (12.5%)** of the royalty interest attributable to the mineral interest Assignor owned in the Lands at the effective date of the Assignment covered by the Lease and included in the drilling and production units for the Wells set forth above, **specifically limited to production from the Wells**. No mineral interest in the Lands is conveyed hereby and no royalty interest attributable to other wells (whether currently drilled or drilled in the future) located in drilling and production units including the Lands (or land pooled herewith) are conveyed hereby. The parties hereto agree that this conveyance of

Landowner Royalty Interest is expressly limited to production revenues from the Wells attributable to the mineral interest of Assignor at the dates specified above under the terms of the Lease. This assignment is expressly limited to royalties accruing from the Wells under the Lease and in the event of the termination thereof, all interest hereby conveyed shall terminate.

This Assignment does not convey and, to any extent necessary, Assignor excepts and reserves unto itself (i) any and all interest in the minerals in the Lands, and (ii) all landowner royalty interest from any and all other wells whether currently drilled or drilled hereafter on the Lands (or on lands pooled therewith) which include all or part of the Lands in the pooled or designated drilling and production unit.

EXECUTED on the acknowledgment date below, but **EFFECTIVE as of February 1, 2025** (the "Effective Date") and therefore Assignee is entitled to the interests conveyed hereby on and after the Effective Date, but not before. Notwithstanding the above, all ad valorem taxes and other property taxes attributable to the interests conveyed herein for the 2025 calendar year shall be the sole responsibility of Assignee. Assignee represents to Assignor that Assignee has taken into account the liability for such ad valorem taxes and property taxes in determining the consideration paid herein.

Assignor: _____
Paul O'Neill, President of Invest Energy, LLC

DIRECT ACKNOWLEDGEMENT

STATE OF KANSAS
COUNTY OF SEDGWICK

This instrument was acknowledged before me on this the _____ of _____, 2025, by **Paul O'Neill, President of Invest Energy, LLC.**

IN WITNESS HEREOF, I have hereunto set my hand and official seal on the day and year first above written.

Signature of Notary

SEAL

Name of Notary

Lot # _____

EXHIBIT "A"

| Well Name | API Number | Surface Location | Drilling Unit |
|-------------------|--------------|------------------|----------------------------------|
| Guttersen C28-725 | 05-123-48933 | SWSE-33-4N-64W | 28-4N-64W: ALL 33-4N-64W: ALL |
| Guttersen C28-735 | 05-123-48932 | SWSE-33-4N-64W | 28-4N-64W: ALL 33-4N-64W: ALL |
| Guttersen C28-745 | 05-123-48931 | SWSE-33-4N-64W | 28-4N-64W: ALL 33-4N-64W: ALL |