

MID-CONTINENT ENERGY EXCHANGE

Oil & Gas Asset Auctions



Data Packet

Guttersen (WBO)

Royalty Interest in
Weld County, CO

In this Document:

[Lot Summary](#)

[Income and Expenses](#)

[Production](#)

[Maps](#)

[Misc.](#)

[Outgoing Conveyance](#)



Summary

Lot Summary

Lease Name: Guttersen C28 (WBO)

County/State: Weld, CO

Asset Type: Royalty Interest

Legal Description: S/2 Sec 28-4N-64W
(SL: Sec 33-4N-64W; BHL: Sec 28-4N-64W)

API: See below

Decimal Interest: 0.000051874

Net Monthly Income: \$262.48

Operator: Chevron USA (Noble Energy)

Well Name	API	Owner interest	Conveyed 1/8th
Guttersen C28-725	05-123-48933	0.00041499	0.000051874
Guttersen C28-735	05-123-48932	0.00041499	0.000051874
Guttersen C28-745	05-123-48931	0.00041499	0.000051874

Disclaimer: Bidders must conduct their own due diligence prior to bidding at the auction. Bidders shall rely upon their own evaluations of the properties and not upon any representation either oral or written provided here. This is a summary of information provided by the seller to Mid-Continent Energy Exchange.



Income and Expenses

Summary

3 months income info

Net Income: \$787.44

Per Month: \$262.48

Monthly Revenue		
PRODUCTION MONTH	OWNER NET REVENUE	CONVEYED 1/8TH
Jun-24	\$2,289.03	\$286.13
Jul-24	\$2,279.31	\$284.91
Aug-24	\$1,731.15	\$216.39
TOTAL	\$6,299.49	\$787.44
MONTHLY AVERAGE	\$2,099.83	\$262.48

IRS Sec. 1031 EXCHANGE. The Seller intends that the sale of this property will qualify as a tax-deferred exchange under Section 1031 of the Internal Revenue Code. Buyer is hereby notified Seller has assigned its rights as Seller in Mid-Continent Energy Exchange LLC's ("Mid-Continent") online oil and gas marketplace, to Petroleum Strategies, INC. ("PSI"), in an Assignment of Rights in order to effect a like-kind exchange of property under IRS Section 1031 Regulations, as provided for in arrangements made a part of the Mid-Continent listing.

					Property						Owner			
Sales Date	Interest Type	Tax or Deduct Code	Owner Interest	Distribution Interest	BTU	Volume	Price	Value	Taxes and Deductions	Amount after Taxes and Deductions	Volume	Value	Taxes and Deductions	Amount after Taxes and Deductions

134448-00005			GUTTERSEN C28-715, 25, 35, 45, State: CO, County: WELD											
OIL														
Jun 24	RI	CNCO	0.00165996	0.00165996		0.00		0.00	19.22	19.22	0.00	0.00	0.03	0.03
Jun 24	RI	SCO1	0.00165996	0.00165996		0.00		0.00	0.00	0.00	0.00	0.00	0.21	0.21
Jun 24	RI	TRP	0.00165996	0.00165996		0.00		0.00	(12,808.36)	(12,808.36)	0.00	0.00	(21.24)	(21.24)
Aug 24	RI	CNCO	0.00165996	0.00165996		89.37	76.29	6,817.77	(9.64)	6,808.13	0.15	11.32	(0.01)	11.31
Aug 24	RI	MKT	0.00165996	0.00165996		0.00		0.00	(11.63)	(11.63)	0.00	0.00	0.00	0.00
Aug 24	RI	SCO1	0.00165996	0.00165996		0.00		0.00	0.00	0.00	0.00	0.00	(0.11)	(0.11)
Aug 24	RI	TRP	0.00165996	0.00165996		0.00		0.00	(393.92)	(393.92)	0.00	0.00	(0.65)	(0.65)
Sep 24	RI	CNCO	0.00165996	0.00165996		37,542.90	70.23	2,636,751.41	(3,815.58)	2,632,935.83	62.32	4,376.90	(6.33)	4,370.57
Sep 24	RI	MKT	0.00165996	0.00165996		0.00		0.00	(4,880.95)	(4,880.95)	0.00	0.00	0.00	0.00
Sep 24	RI	SCO1	0.00165996	0.00165996		0.00		0.00	0.00	0.00	0.00	0.00	(42.22)	(42.22)
Sep 24	RI	TRP	0.00165996	0.00165996		0.00		0.00	(93,037.99)	(93,037.99)	0.00	0.00	(154.45)	(154.45)
Total Property												4,388.22	(224.77)	4,163.45
134448-00006			GUTTERSEN C28-715, 25, 35, 45, State: CO, County: WELD											
GAS														
Jun 24	RI	CNCO	0.00165996	0.00165996		0.00		0.00	(0.40)	(0.40)	0.00	0.00	0.00	0.00
Jun 24	RI	TRT	0.00165996	0.00165996		0.00		0.00	268.92	268.92	0.00	0.00	0.44	0.44
Aug 24	RI	CNCO	0.00165996	0.00165996		176,590.28	1.69	297,616.35	(330.21)	297,286.14	293.13	494.04	(0.56)	493.48
Aug 24	RI	PRO	0.00165996	0.00165996		0.00		0.00	(15,214.66)	(15,214.66)	0.00	0.00	(25.26)	(25.26)
Aug 24	RI	SCO1	0.00165996	0.00165996		0.00		0.00	0.00	0.00	0.00	0.00	(3.40)	(3.40)
Aug 24	RI	TRP	0.00165996	0.00165996		0.00		0.00	(75,802.78)	(75,802.78)	0.00	0.00	(125.82)	(125.82)
Aug 24	RI	TRT	0.00165996	0.00165996		0.00		0.00	(1,682.41)	(1,682.41)	0.00	0.00	(2.79)	(2.79)
PLANT PRODUCTS														
Aug 24	RI	CNCO	0.00165996	0.00165996		789,551.88	0.47	370,129.19	(424.81)	369,704.38	1,310.62	614.42	(0.68)	613.74
Aug 24	RI	MKT	0.00165996	0.00165996		0.00		0.00	(499.31)	(499.31)	0.00	0.00	0.00	0.00
Aug 24	RI	NGLF	0.00165996	0.00165996		0.00		0.00	(9,230.14)	(9,230.14)	0.00	0.00	(15.34)	(15.34)
Aug 24	RI	PRO	0.00165996	0.00165996		0.00		0.00	(86,056.80)	(86,056.80)	0.00	0.00	(142.88)	(142.88)
Aug 24	RI	SCO1	0.00165996	0.00165996		0.00		0.00	0.00	0.00	0.00	0.00	(4.15)	(4.15)
Aug 24	RI	TRP	0.00165996	0.00165996		0.00		0.00	(24,930.72)	(24,930.72)	0.00	0.00	(41.35)	(41.35)
Aug 24	RI	CNCO	0.00165996	0.00165996		129,407.72	1.39	179,959.92	(248.58)	179,711.34	214.81	298.75	(0.42)	298.33
Aug 24	RI	MKT	0.00165996	0.00165996		0.00		0.00	(74.71)	(74.71)	0.00	0.00	0.00	0.00
Aug 24	RI	NGLF	0.00165996	0.00165996		0.00		0.00	(1,396.57)	(1,396.57)	0.00	0.00	(2.32)	(2.32)
Aug 24	RI	PRO	0.00165996	0.00165996		0.00		0.00	(18,150.21)	(18,150.21)	0.00	0.00	(30.12)	(30.12)
Aug 24	RI	SCO1	0.00165996	0.00165996		0.00		0.00	0.00	0.00	0.00	0.00	(2.60)	(2.60)
Aug 24	RI	TRP	0.00165996	0.00165996		0.00		0.00	(3,805.28)	(3,805.28)	0.00	0.00	(6.33)	(6.33)
Aug 24	RI	CNCO	0.00165996	0.00165996		1,353.82	1.23	1,669.34	(2.24)	1,667.10	2.25	2.77	0.00	2.77
Aug 24	RI	PRO	0.00165996	0.00165996		0.00		0.00	(171.36)	(171.36)	0.00	0.00	(0.29)	(0.29)
Aug 24	RI	SCO1	0.00165996	0.00165996		0.00		0.00	0.00	0.00	0.00	0.00	(0.02)	(0.02)

Represented Unit of Measure: Gas = MCFs, Plant Products = GALs, Oil = BBLs

Generated on Friday, October 25, 2024 7:26 PM

					Property						Owner			
Sales Date	Interest Type	Tax or Deduct Code	Owner Interest	Distribution Interest	BTU	Volume	Price	Value	Taxes and Deductions	Amount after Taxes and Deductions	Volume	Value	Taxes and Deductions	Amount after Taxes and Deductions
Total Property												1,409.98	(403.89)	1,006.09

Statement Number		FORM7_0008204112_20242110			Owner		Operator NOBLE ENERGY- INC.					
Completion ID	Completion Name	Days	Oil	Oil	Oil	Gas	Gas	Gas	Gas	Gas	Gas	Water
Property Number	API Well Number	Status	Prod	Sales	Gravity	Prod	Sales	Sales	Fuel	Flared	Vented	Prod
			BBL	BBL		MCF	MCF	MMBTU	MCF	MCF	MCF	BBL

NB-CD

Prod Month: Aug 24

NBRR

Prod Month: Aug 24

Statement Number		FORM7_0008204112_20242110			Owner		Operator NOBLE ENERGY- INC.					
Completion ID	Completion Name	Days	Oil	Oil	Oil	Gas	Gas	Gas	Gas	Gas	Gas	Water
Property Number	API Well Number	Status	Prod	Sales	Gravity	Prod	Sales	Sales	Fuel	Flared	Vented	Prod
			BBL	BBL		MCF	MCF	MMBTU	MCF	MCF	MCF	BBL

NBRR
Prod Month: Aug 24

633588/1	GUTTERSEN C28-73	31	14,533.00	14,534.00	50.10	74,832.00	74,765.00	0.00	67.00	0.00	0.00	2,834.00
000000000633588	051234893200	PR										
633589/1	GUTTERSEN C28-72	31	16,419.00	16,419.00	50.20	73,031.00	72,965.00	0.00	66.00	0.00	0.00	2,155.00
000000000633589	051234893300	PR										

Statement Number		FORM7_0008204112_20242110			Owner		Operator NOBLE ENERGY- INC.					
Completion ID	Completion Name	Days	Oil	Oil	Oil	Gas	Gas	Gas	Gas	Gas	Gas	Water
Property Number	API Well Number	Status	Prod	Sales	Gravity	Prod	Sales	Sales	Fuel	Flared	Vented	Prod
			BBL	BBL		MCF	MCF	MMBTU	MCF	MCF	MCF	BBL

NBRR
Prod Month: Aug 24

Production Status Codes:

AA: ABANDONMENT APPROVED	AB: Abandoned	AD: ABANDONMENT WITNESSED
AS: ABANDONMENT SUBMITTED	DA: Dry and Abandoned	DG: Drilling
IJ: Injecting	OO: OUT OF SERVICE	PA: Plugged and Abandoned
PR: Producing	SI: Shut in	SO: SUSPENDED OPERATIONS
TA: Temporarily Abandoned	WO: Waiting on Completion	

Gas Volumes are reported at 14.73PSI. Oil Volumes are reported at the API standard of 60 degrees

Check Number	E006606953	Owner	Operator	CHEVRON U.S.A. INC. (CUSA) ON BEHALF OF THE FOLLOWING ENTITIES
--------------	------------	-------	----------	--

					Property						Owner			
Sales Date	Interest Type	Tax or Deduct Code	Owner Interest	Distribution Interest	BTU	Volume	Price	Value	Taxes and Deductions	Amount after Taxes and Deductions	Volume	Value	Taxes and Deductions	Amount after Taxes and Deductions

134448-00005															GUTTERSEN C28-715, 25, 35, 45, State: CO, County: WELD																													
OIL																																												
May 24			RI			CNCO			0.00165996			0.00165996						0.00						0.00			0.09			0.09			0.00			0.00			0.00			0.00		

Represented Unit of Measure: Gas = MCFs, Plant Products = GALs, Oil = BBLs

Generated on Thursday, September 26, 2024 7:40 PM

© 2024 Enverus. All rights reserved. Unauthorized use prohibited.

					Property						Owner			
Sales Date	Interest Type	Tax or Deduct Code	Owner Interest	Distribution Interest	BTU	Volume	Price	Value	Taxes and Deductions	Amount after Taxes and Deductions	Volume	Value	Taxes and Deductions	Amount after Taxes and Deductions
May 24	RI	TRP	0.00165996	0.00165996		0.00		0.00	(64.21)	(64.21)	0.00	0.00	(0.11)	(0.11)
Jun 24	RI	CNCO	0.00165996	0.00165996		0.00		0.00	0.24	0.24	0.00	0.00	0.00	0.00
Jun 24	RI	MKT	0.00165996	0.00165996		0.00		0.00	(4.92)	(4.92)	0.00	0.00	0.00	0.00
Jun 24	RI	TRP	0.00165996	0.00165996		0.00		0.00	(160.56)	(160.56)	0.00	0.00	(0.27)	(0.27)
Jul 24	RI	CNCO	0.00165996	0.00165996		(350.59)	80.23	(28,128.74)	40.99	(28,087.75)	(0.58)	(46.68)	0.08	(46.60)
Jul 24	RI	MKT	0.00165996	0.00165996		0.00		0.00	45.59	45.59	0.00	0.00	0.00	0.00
Jul 24	RI	SCO1	0.00165996	0.00165996		0.00		0.00	0.00	0.00	0.00	0.00	0.45	0.45
Jul 24	RI	TRP	0.00165996	0.00165996		0.00		0.00	813.64	813.64	0.00	0.00	1.35	1.35
Jul 24	RI	CNCO	0.00165996	0.00165996		147.42	80.23	11,827.88	(17.74)	11,810.14	0.24	19.63	(0.03)	19.60
Jul 24	RI	SCO1	0.00165996	0.00165996		0.00		0.00	0.00	0.00	0.00	0.00	(0.20)	(0.20)
Aug 24	RI	CNCO	0.00165996	0.00165996		46,967.75	76.29	3,583,027.90	(5,203.19)	3,577,824.71	77.96	5,947.68	(8.63)	5,939.05
Aug 24	RI	MKT	0.00165996	0.00165996		0.00		0.00	(6,106.28)	(6,106.28)	0.00	0.00	0.00	0.00
Aug 24	RI	SCO1	0.00165996	0.00165996		0.00		0.00	0.00	0.00	0.00	0.00	(57.58)	(57.58)
Aug 24	RI	TRP	0.00165996	0.00165996		0.00		0.00	(114,241.31)	(114,241.31)	0.00	0.00	(189.63)	(189.63)
Total Property												5,920.63	(254.57)	5,666.06
134448-00006GUTTERSEN C28-715, 25, 35, 45, State: CO, County: WELD														
GAS														
Jul 24	RI	CNCO	0.00165996	0.00165996		199,216.61	2.07	411,529.41	(483.13)	411,046.28	330.69	683.12	(0.79)	682.33
Jul 24	RI	PRO	0.00165996	0.00165996		0.00		0.00	(20,744.92)	(20,744.92)	0.00	0.00	(34.44)	(34.44)
Jul 24	RI	SCO1	0.00165996	0.00165996		0.00		0.00	0.00	0.00	0.00	0.00	(5.05)	(5.05)
Jul 24	RI	TRP	0.00165996	0.00165996		0.00		0.00	(84,828.55)	(84,828.55)	0.00	0.00	(140.82)	(140.82)
Jul 24	RI	TRT	0.00165996	0.00165996		0.00		0.00	(1,851.36)	(1,851.36)	0.00	0.00	(3.08)	(3.08)
PLANT PRODUCTS														
Jul 24	RI	CNCO	0.00165996	0.00165996		883,344.14	0.50	438,873.79	(504.75)	438,369.04	1,466.32	728.51	(0.79)	727.72
Jul 24	RI	MKT	0.00165996	0.00165996		0.00		0.00	(559.84)	(559.84)	0.00	0.00	0.00	0.00
Jul 24	RI	NGLF	0.00165996	0.00165996		0.00		0.00	(10,372.87)	(10,372.87)	0.00	0.00	(17.22)	(17.22)
Jul 24	RI	PRO	0.00165996	0.00165996		0.00		0.00	(102,440.86)	(102,440.86)	0.00	0.00	(170.08)	(170.08)
Jul 24	RI	SCO1	0.00165996	0.00165996		0.00		0.00	0.00	0.00	0.00	0.00	(4.95)	(4.95)
Jul 24	RI	TRP	0.00165996	0.00165996		0.00		0.00	(27,892.22)	(27,892.22)	0.00	0.00	(46.30)	(46.30)
Jul 24	RI	CNCO	0.00165996	0.00165996		145,257.86	1.43	207,456.79	(285.98)	207,170.81	241.12	344.37	(0.47)	343.90
Jul 24	RI	MKT	0.00165996	0.00165996		0.00		0.00	(84.41)	(84.41)	0.00	0.00	0.00	0.00
Jul 24	RI	NGLF	0.00165996	0.00165996		0.00		0.00	(1,579.65)	(1,579.65)	0.00	0.00	(2.61)	(2.61)
Jul 24	RI	PRO	0.00165996	0.00165996		0.00		0.00	(21,364.57)	(21,364.57)	0.00	0.00	(35.47)	(35.47)
Jul 24	RI	SCO1	0.00165996	0.00165996		0.00		0.00	0.00	0.00	0.00	0.00	(2.99)	(2.99)
Jul 24	RI	TRP	0.00165996	0.00165996		0.00		0.00	(4,282.22)	(4,282.22)	0.00	0.00	(7.12)	(7.12)
Jul 24	RI	CNCO	0.00165996	0.00165996		1,402.32	1.22	1,712.39	(2.30)	1,710.09	2.33	2.84	0.00	2.84
Jul 24	RI	PRO	0.00165996	0.00165996		0.00		0.00	(176.57)	(176.57)	0.00	0.00	(0.29)	(0.29)
Jul 24	RI	SCO1	0.00165996	0.00165996		0.00		0.00	0.00	0.00	0.00	0.00	(0.03)	(0.03)
Total Property												1,758.84	(472.50)	1,286.34

Represented Unit of Measure: Gas = MCFs, Plant Products = GALs, Oil = BBLs

Statement Number		FORM7_0008204112_20242009			Owner		Operator NOBLE ENERGY- INC.					
Completion ID	Completion Name	Days	Oil	Oil	Oil	Gas	Gas	Gas	Gas	Gas	Gas	Water
Property Number	API Well Number	Status	Prod	Sales	Gravity	Prod	Sales	Sales	Fuel	Flared	Vented	Prod
			BBL	BBL		MCF	MCF	MMBTU	MCF	MCF	MCF	BBL

NB-CD
Prod Month: Jul 24

Statement Number		FORM7_0008204112_20242009			Owner		Operator NOBLE ENERGY- INC.					
Completion ID	Completion Name	Days	Oil	Oil	Oil	Gas	Gas	Gas	Gas	Gas	Gas	Water
Property Number	API Well Number	Status	Prod	Sales	Gravity	Prod	Sales	Sales	Fuel	Flared	Vented	Prod
			BBL	BBL		MCF	MCF	MMBTU	MCF	MCF	MCF	BBL

NBRR
Prod Month: Jul 24

--	--	--	--	--	--	--	--	--	--	--	--	--

633588/1	GUTTERSEN C28-73	31	19,285.00	19,286.00	50.20	88,444.00	88,360.00	0.00	84.00	0.00	0.00	6,028.00
000000000633588	051234893200	PR										
633589/1	GUTTERSEN C28-72	31	20,295.00	20,296.00	50.20	80,861.00	80,784.00	0.00	77.00	0.00	0.00	4,695.00
000000000633589	051234893300	PR										

--	--	--	--	--	--	--	--	--	--	--	--	--

Statement Number		FORM7_0008204112_20242009			Owner		Operator NOBLE ENERGY- INC.					
Completion ID	Completion Name	Days	Oil	Oil	Oil	Gas	Gas	Gas	Gas	Gas	Gas	Water
Property Number	API Well Number	Status	Prod	Sales	Gravity	Prod	Sales	Sales	Fuel	Flared	Vented	Prod
			BBL	BBL		MCF	MCF	MMBTU	MCF	MCF	MCF	BBL

NBRR
Prod Month: Jul 24

Production Status Codes:		
AA: ABANDONMENT APPROVED	AB: Abandoned	AD: ABANDONMENT WITNESSED
AS: ABANDONMENT SUBMITTED	DA: Dry and Abandoned	DG: Drilling
IJ: Injecting	OO: OUT OF SERVICE	PA: Plugged and Abandoned
PR: Producing	SI: Shut in	SO: SUSPENDED OPERATIONS
TA: Temporarily Abandoned	WO: Waiting on Completion	

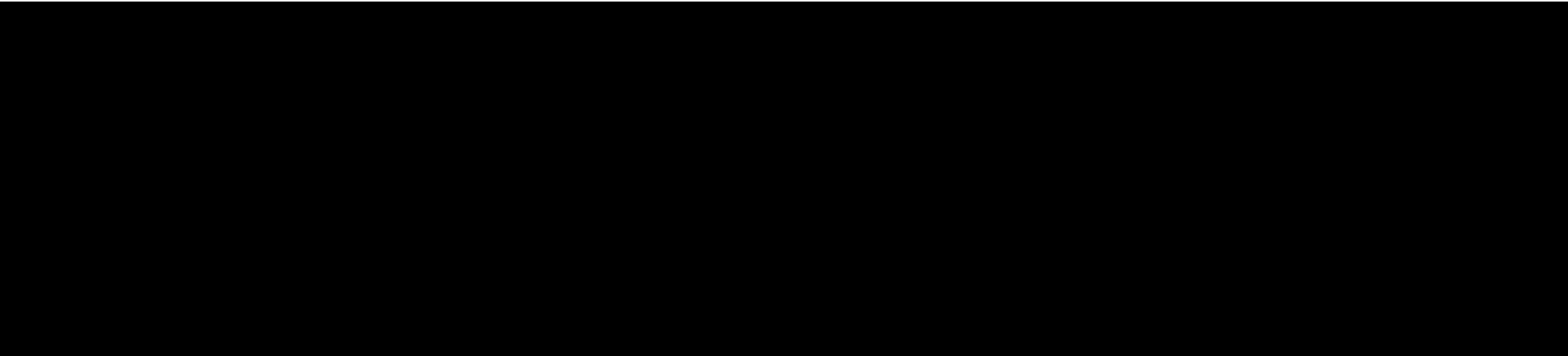
Gas Volumes are reported at 14.73PSI. Oil Volumes are reported at the API standard of 60 degrees

					Property						Owner			
Sales Date	Interest Type	Tax or Deduct Code	Owner Interest	Distribution Interest	BTU	Volume	Price	Value	Taxes and Deductions	Amount after Taxes and Deductions	Volume	Value	Taxes and Deductions	Amount after Taxes and Deductions

134448-00005GUTTERSEN C28-715, 25, 35, 45, State: CO, County: WELD														
OIL														
Jun 24	RI	CNCO	0.00165996	0.00165996		474.18	78.50	37,222.68	(54.21)	37,168.47	0.79	61.79	(0.09)	61.70
Jun 24	RI	MKT	0.00165996	0.00165996		0.00		0.00	(61.65)	(61.65)	0.00	0.00	0.00	0.00
Jun 24	RI	SCO1	0.00165996	0.00165996		0.00		0.00	0.00	0.00	0.00	0.00	(0.60)	(0.60)
Jun 24	RI	TRP	0.00165996	0.00165996		0.00		0.00	(1,087.01)	(1,087.01)	0.00	0.00	(1.80)	(1.80)
Jun 24	RI	CNCO	0.00165996	0.00165996		99.71	78.50	7,827.15	(11.74)	7,815.41	0.17	13.00	(0.01)	12.99
Jun 24	RI	SCO1	0.00165996	0.00165996		0.00		0.00	0.00	0.00	0.00	0.00	(0.13)	(0.13)
Jul 24	RI	CNCO	0.00165996	0.00165996		59,490.78	80.23	4,773,099.41	(6,952.56)	4,766,146.85	98.75	7,923.15	(11.54)	7,911.61
Jul 24	RI	MKT	0.00165996	0.00165996		0.00		0.00	(7,734.40)	(7,734.40)	0.00	0.00	0.00	0.00
Jul 24	RI	SCO1	0.00165996	0.00165996		0.00		0.00	0.00	0.00	0.00	0.00	(76.94)	(76.94)
Jul 24	RI	TRP	0.00165996	0.00165996		0.00		0.00	(138,066.80)	(138,066.80)	0.00	0.00	(229.19)	(229.19)
Total Property												7,997.94	(320.30)	7,677.64
134448-00006GUTTERSEN C28-715, 25, 35, 45, State: CO, County: WELD														
GAS														
Jun 24	RI	CNCO	0.00165996	0.00165996		175,861.57	1.58	278,489.12	(299.13)	278,189.99	291.92	462.29	(0.49)	461.80
Jun 24	RI	PRO	0.00165996	0.00165996		0.00		0.00	(14,237.53)	(14,237.53)	0.00	0.00	(23.63)	(23.63)
Jun 24	RI	SCO1	0.00165996	0.00165996		0.00		0.00	0.00	0.00	0.00	0.00	(3.07)	(3.07)
Jun 24	RI	TRP	0.00165996	0.00165996		0.00		0.00	(77,404.86)	(77,404.86)	0.00	0.00	(128.49)	(128.49)
Jun 24	RI	TRT	0.00165996	0.00165996		0.00		0.00	(1,661.03)	(1,661.03)	0.00	0.00	(2.75)	(2.75)
PLANT PRODUCTS														
May 24	RI	CNCO	0.00165996	0.00165996		0.00		11.60	(0.01)	11.59	0.00	0.01	0.00	0.01
May 24	RI	NGLF	0.00165996	0.00165996		0.00		0.00	(20.16)	(20.16)	0.00	0.00	(0.03)	(0.03)
May 24	RI	PRO	0.00165996	0.00165996		0.00		0.00	(2.38)	(2.38)	0.00	0.00	0.00	0.00
May 24	RI	TRP	0.00165996	0.00165996		0.00		0.00	(6.97)	(6.97)	0.00	0.00	(0.01)	(0.01)
May 24	RI	NGLF	0.00165996	0.00165996		0.00		(0.15)	(2.95)	(3.10)	0.00	0.00	(0.01)	(0.01)
May 24	RI	PRO	0.00165996	0.00165996		0.00		0.00	0.03	0.03	0.00	0.00	0.00	0.00
May 24	RI	TRP	0.00165996	0.00165996		0.00		0.00	(0.97)	(0.97)	0.00	0.00	(0.01)	(0.01)
Jun 24	RI	CNCO	0.00165996	0.00165996		780,595.22	0.48	375,157.12	(433.36)	374,723.76	1,295.76	622.74	(0.67)	622.07
Jun 24	RI	MKT	0.00165996	0.00165996		0.00		0.00	(503.04)	(503.04)	0.00	0.00	0.00	0.00
Jun 24	RI	NGLF	0.00165996	0.00165996		0.00		0.00	(9,140.24)	(9,140.24)	0.00	0.00	(15.20)	(15.20)
Jun 24	RI	PRO	0.00165996	0.00165996		0.00		0.00	(85,252.77)	(85,252.77)	0.00	0.00	(141.53)	(141.53)
Jun 24	RI	SCO1	0.00165996	0.00165996		0.00		0.00	0.00	0.00	0.00	0.00	(4.25)	(4.25)
Jun 24	RI	TRP	0.00165996	0.00165996		0.00		0.00	(24,580.49)	(24,580.49)	0.00	0.00	(40.80)	(40.80)
Jun 24	RI	CNCO	0.00165996	0.00165996		129,568.73	1.40	181,963.01	(251.29)	181,711.72	215.08	302.05	(0.42)	301.63
Jun 24	RI	MKT	0.00165996	0.00165996		0.00		0.00	(78.85)	(78.85)	0.00	0.00	0.00	0.00
Jun 24	RI	NGLF	0.00165996	0.00165996		0.00		0.00	(1,424.33)	(1,424.33)	0.00	0.00	(2.37)	(2.37)
Jun 24	RI	PRO	0.00165996	0.00165996		0.00		0.00	(17,979.81)	(17,979.81)	0.00	0.00	(29.80)	(29.80)
Jun 24	RI	SCO1	0.00165996	0.00165996		0.00		0.00	0.00	0.00	0.00	0.00	(2.63)	(2.63)

Represented Unit of Measure: Gas = MCFs, Plant Products = GALs, Oil = BBLs

					Property						Owner			
Sales Date	Interest Type	Tax or Deduct Code	Owner Interest	Distribution Interest	BTU	Volume	Price	Value	Taxes and Deductions	Amount after Taxes and Deductions	Volume	Value	Taxes and Deductions	Amount after Taxes and Deductions
Jun 24	RI	TRP	0.00165996	0.00165996		0.00		0.00	(3,873.14)	(3,873.14)	0.00	0.00	(6.43)	(6.43)
Jun 24	RI	CNCO	0.00165996	0.00165996		1,485.27	1.07	1,585.74	(2.10)	1,583.64	2.47	2.63	0.00	2.63
Jun 24	RI	PRO	0.00165996	0.00165996		0.00		0.00	(182.98)	(182.98)	0.00	0.00	(0.31)	(0.31)
Jun 24	RI	SCO1	0.00165996	0.00165996		0.00		0.00	0.00	0.00	0.00	0.00	(0.02)	(0.02)
Total Property												1,389.72	(402.92)	986.80



	Owner Gross Value	Owner Deductions	Owner Taxes	Non Revenue Deductions	Owner Net Value
Check Total	25,821.58	(1,637.82)	(279.46)		23,904.30
Year to Date	137,156.08	(11,169.69)	(389.12)		125,597.27

Legend		
Interest Types		
NR - NON-PARTICIPATING ROYALTY INTEREST		RI - ROYALTY INTEREST
Tax Codes		
CNCO - CONSERVATION TAX		SCO1 - COLORADO SEVERANCE WITHHOLDING
Deduction Codes		
F - FUEL		MKT - MARKETING
O06 - INTEREST PAID		PRO - PROCESSING
TRT - TREATING		NGLF - NGL FRACTIONATION
		TRP - TRANSPORTATION



Production Statement

Owner			Operator					Statement				
			NOBLE ENERGY- INC. P O BOX 4791 HOUSTON, TX 77210-4791					Statement Number FORM7_0008204112_20242108 Statement Date 2024-08-21				

Completion ID Property Number	Completion Name API Well Number	Days Status	Oil Prod BBL	Oil Sales BBL	Oil Gravity	Gas Prod MCF	Gas Sales MCF	Gas Sales MMBTU	Gas Fuel MCF	Gas Flared MCF	Gas Vented MCF	Water Prod BBL
CODL												
Prod Month: Jun 24												
633587/1 000000000633587	GUTTERSEN C28-74 051234893100	30 PR	21,583.00	21,582.00	50.60	77,681.00	77,586.00	0.00	95.00	0.00	0.00	8,622.00
Total for Jun 24			21,583.00	21,582.00		77,681.00	77,586.00	0.00	95.00	0.00	0.00	8,622.00

Statement Number		FORM7_0008204112_20242108			Owner		Operator NOBLE ENERGY- INC.					
Completion ID	Completion Name	Days	Oil	Oil	Oil	Gas	Gas	Gas	Gas	Gas	Gas	Water
Property Number	API Well Number	Status	Prod	Sales	Gravity	Prod	Sales	Sales	Fuel	Flared	Vented	Prod
			BBL	BBL		MCF	MCF	MMBTU	MCF	MCF	MCF	BBL

NB-CD
Prod Month: Jun 24

Statement Number	FORM7_0008204112_20242108		Owner			Operator NOBLE ENERGY- INC.						
Completion ID	Completion Name	Days	Oil	Oil	Oil	Gas	Gas	Gas	Gas	Gas	Gas	Water
Property Number	API Well Number	Status	Prod	Sales	Gravity	Prod	Sales	Sales	Fuel	Flared	Vented	Prod
			BBL	BBL		MCF	MCF	MMBTU	MCF	MCF	MCF	BBL

Statement Number			FORM7_0008204112_20242108			Owner			Operator				NOBLE ENERGY- INC.	
Completion ID	Completion Name		Days	Oil	Oil	Oil	Gas	Gas	Gas	Gas	Gas	Gas	Water	
Property Number	API Well Number		Status	Prod	Sales	Gravity	Prod	Sales	Sales	Fuel	Flared	Vented	Prod	
				BBL	BBL		MCF	MCF	MMBTU	MCF	MCF	MCF	BBL	

NBRR

Prod Month: Jun 24

Production Status Codes:

AB: Abandoned	DA: Dry and Abandoned	DG: Drilling
IJ: Injecting	PA: Plugged and Abandoned	PR: Producing
SI: Shut in	TA: Temporarily Abandoned	WO: Waiting on Completion

Gas Volumes are reported at 14.73PSI. Oil Volumes are reported at the API standard of 60 degrees

Check Number	E006596083	Owner	Operator	CHEVRON U.S.A. INC. (CUSA) ON BEHALF OF THE FOLLOWING ENTITIES										
--------------	------------	-------	----------	--	--	--	--	--	--	--	--	--	--	--

					Property						Owner			
Sales Date	Interest Type	Tax or Deduct Code	Owner Interest	Distribution Interest	BTU	Volume	Price	Value	Taxes and Deductions	Amount after Taxes and Deductions	Volume	Value	Taxes and Deductions	Amount after Taxes and Deductions

134448-00005		GUTTERSEN C28-715, 25, 35, 45, State: CO, County: WELD												
OIL														
May 24	RI		0.00165996	0.00000000		0.00		0.00		0.00	0.00	0.00		(0.08)
May 24		TAX05	0.00165996	1.00000000					(0.08)				(0.08)	
May 24	RI	TAX	0.00165996	0.00165996		63.54	78.76	5,004.09	(7.27)	4,840.94	0.11	8.32	0.00	8.08
May 24		DEDUCT	0.00165996	0.00165996					(155.88)				(0.24)	

Represented Unit of Measure: Gas = MCFs, Plant Products = GALs, Oil = BBLs

Generated on Thursday, July 25, 2024 6:55 PM

					Property						Owner			
Sales Date	Interest Type	Tax or Deduct Code	Owner Interest	Distribution Interest	BTU	Volume	Price	Value	Taxes and Deductions	Amount after Taxes and Deductions	Volume	Value	Taxes and Deductions	Amount after Taxes and Deductions
May 24	RI		0.00165996	0.00000000		0.00		0.00		0.00	0.00	0.00		(0.04)
May 24		TAX05	0.00165996	1.00000000					(0.04)				(0.04)	
May 24	RI	TAX	0.00165996	0.00165996		29.83	78.76	2,349.27	(3.42)	2,273.00	0.05	3.89	(0.03)	3.73
May 24		DEDUCT	0.00165996	0.00165996					(72.85)				(0.13)	
Jun 24	RI		0.00165996	0.00000000		0.00		0.00		0.00	0.00	0.00		(79.91)
Jun 24		TAX05	0.00165996	1.00000000					(79.91)				(79.91)	
Jun 24	RI	TAX	0.00165996	0.00165996		63,168.14	78.50	4,958,640.44	(7,220.74)	4,798,396.71	104.86	8,231.16	(11.99)	7,978.78
Jun 24		DEDUCT	0.00165996	0.00165996					(153,022.99)				(240.39)	
Total Property												8,243.37	(332.81)	7,910.56
134448-00006 GUTTERSEN C28-715, 25, 35, 45, State: CO, County: WELD														
GAS														
May 24	RI		0.00165996	0.00000000		0.00		0.00		0.00	0.00	0.00		(0.59)
May 24		TAX05	0.00165996	1.00000000					(0.59)				(0.59)	
May 24	RI	TAX	0.00165996	0.00165996		43,998.79	1.27	55,963.06	(59.81)	35,534.10	73.04	92.90	(0.10)	61.20
May 24		DEDUCT	0.00165996	0.00165996					(20,369.15)				(31.60)	
PLANT PRODUCTS														
May 24	RI		0.00165996	0.00000000		0.00		0.00		0.00	0.00	0.00		(0.01)
May 24		TAX05	0.00165996	1.00000000					(0.01)				(0.01)	
May 24	RI	TAX	0.00165996	0.00165996		323.83	1.06	344.67	(0.46)	303.26	0.54	0.58	0.00	0.52
May 24		DEDUCT	0.00165996	0.00165996					(40.95)				(0.06)	
May 24	RI		0.00165996	0.00000000		0.00		0.00		0.00	0.00	0.00		(1.04)
May 24		TAX05	0.00165996	1.00000000					(1.04)				(1.04)	
May 24	RI	TAX	0.00165996	0.00165996		191,806.54	0.48	91,895.84	(111.11)	62,499.89	318.39	152.56	(0.11)	109.50
May 24		DEDUCT	0.00165996	0.00165996					(29,284.84)				(42.95)	
May 24	RI		0.00165996	0.00000000		0.00		0.00		0.00	0.00	0.00		(0.62)
May 24		TAX05	0.00165996	1.00000000					(0.62)				(0.62)	
May 24	RI	TAX	0.00165996	0.00165996		30,362.28	1.42	43,038.67	(59.47)	37,251.68	50.40	71.43	(0.07)	61.90
May 24		DEDUCT	0.00165996	0.00165996					(5,727.52)				(9.46)	
Total Property												317.47	(86.61)	230.86

	Owner Gross Value	Owner Deductions	Owner Taxes	Non Revenue Deductions	Owner Net Value
Check Total	9,848.96	(372.56)	(109.02)		9,367.38

Check Number	E006596083	Owner	Operator	CHEVRON U.S.A. INC. (CUSA) ON BEHALF OF THE FOLLOWING ENTITIES
--------------	------------	-------	----------	--

Legend	
Interest Types	
NR - NON-PARTICIPATING ROYALTY INTEREST	RI - ROYALTY INTEREST
Tax Codes	
TAX - TAX	TAX05 - COLORADO STATE TAX
Deduction Codes	
DEDUCT - DEDUCT	

Statement Number		FORM7_0008204112_20241907			Owner		Operator NOBLE ENERGY- INC.					
Completion ID	Completion Name	Days	Oil	Oil	Oil	Gas	Gas	Gas	Gas	Gas	Gas	Water
Property Number	API Well Number	Status	Prod	Sales	Gravity	Prod	Sales	Sales	Fuel	Flared	Vented	Prod
			BBL	BBL		MCF	MCF	MMBTU	MCF	MCF	MCF	BBL

NB-CD
Prod Month: May 24

Statement Number FORM7_0008204112_20241907			Owner			Operator NOBLE ENERGY- INC.						
Completion ID	Completion Name	Days	Oil	Oil	Oil	Gas	Gas	Gas	Gas	Gas	Gas	Water
Property Number	API Well Number	Status	Prod	Sales	Gravity	Prod	Sales	Sales	Fuel	Flared	Vented	Prod
			BBL	BBL		MCF	MCF	MMBTU	MCF	MCF	MCF	BBL

633588/1	GUTTERSEN C28-73	15	6,082.00	6,082.00	51.50	20,396.00	20,361.00	0.00	35.00	0.00	0.00	6,734.00
000000000633588	051234893200	PR										
633589/1	GUTTERSEN C28-72	15	5,602.00	5,602.00	51.60	18,480.00	18,448.00	0.00	32.00	0.00	0.00	6,265.00
000000000633589	051234893300	PR										

Production Status Codes:

AB: Abandoned	DA: Dry and Abandoned	DG: Drilling
IJ: Injecting	PA: Plugged and Abandoned	PR: Producing
SI: Shut in	TA: Temporarily Abandoned	WO: Waiting on Completion

Gas Volumes are reported at 14.73PSI. Oil Volumes are reported at the API standard of 60 degrees



Production

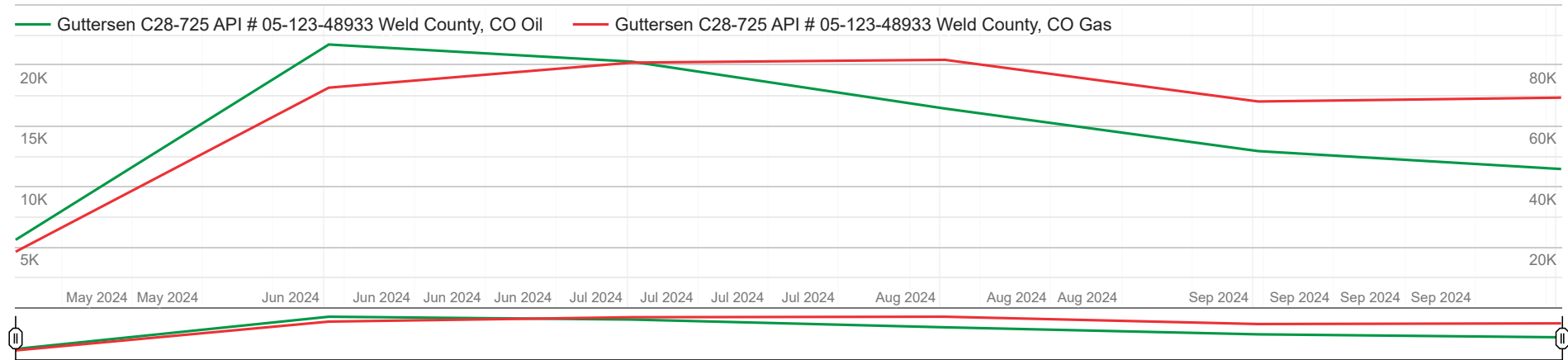


Well Production Search

Home / Well Production

API # contains 05-123-48933

Production Graph of Search Results



★ Focus Display all Display ▾

Download

Date	Guttersen C28-725 API # 05-123-48933 Weld County, CO	
	Oil Prod (BBLs)	Gas Prod (MCF)
Oct 2024	11,440	69,302
Sep 2024	12,918	68,032
Aug 2024	16,425	81,772
Jul 2024	20,295	80,861
Jun 2024	21,706	72,591
Date	Guttersen C28-725 API # 05-123-48933 Weld County, CO	

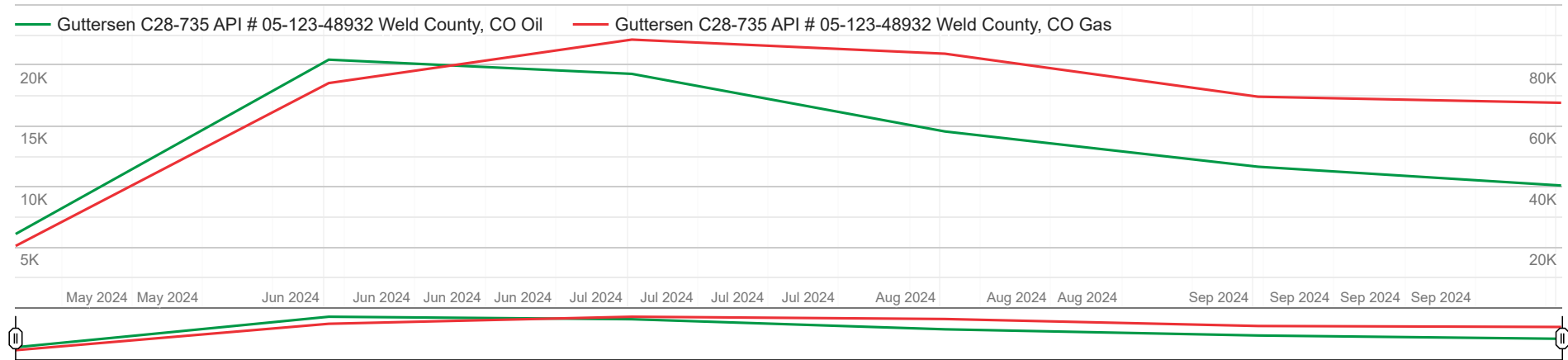
Date	Guttersen C28-725	
	API # 05-123-48933	
	Weld County, CO	
	Oil Prod (BBLs)	Gas Prod (MCF)
May 2024	5,602	18,480
Apr 2024	0	0
Mar 2024	0	0
Feb 2024	0	0
Jan 2024	0	0
Dec 2023	0	0
Nov 2023	0	0
Oct 2023	0	0
Sep 2023	0	0
Aug 2023	0	0
Jul 2023	0	0
Jun 2023	0	0
May 2023	0	0
Apr 2023	0	0
Mar 2023	0	0
Feb 2023	0	0
Jan 2023	0	0
Dec 2022	0	0
Nov 2022	0	0
Date	Guttersen C28-725	
	API # 05-123-48933	
	Weld County, CO	

Well Production Search

Home / Well Production

API # contains 05-123-48932

Production Graph of Search Results



★ Focus

Display all

Display ▾

Download

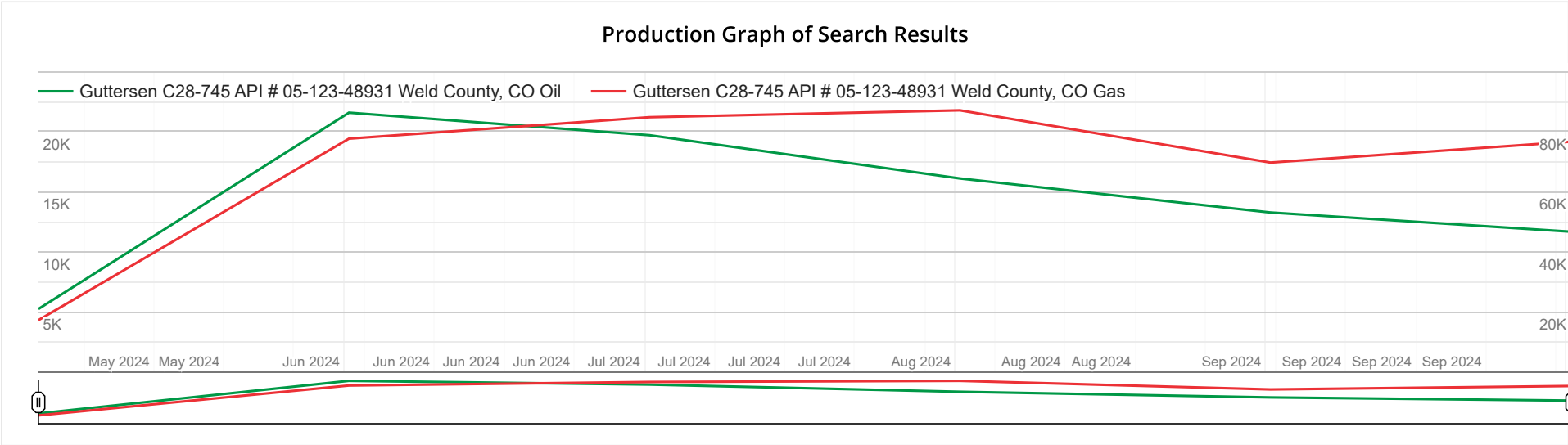
Date	Guttersen C28-735 API # 05-123-48932 Weld County, CO	
	Oil Prod (BBLs)	Gas Prod (MCF)
Oct 2024	10,080	67,602
Sep 2024	11,628	69,607
Aug 2024	14,536	83,790
Jul 2024	19,285	88,444
Jun 2024	20,456	74,107
Date	Guttersen C28-735 API # 05-123-48932 Weld County, CO	

Date	Guttersen C28-735 API # 05-123-48932 Weld County, CO	
	Oil Prod (BBLs)	Gas Prod (MCF)
May 2024	6,082	20,396
Apr 2024	0	0
Mar 2024	0	0
Feb 2024	0	0
Jan 2024	0	0
Dec 2023	0	0
Nov 2023	0	0
Oct 2023	0	0
Sep 2023	0	0
Aug 2023	0	0
Jul 2023	0	0
Jun 2023	0	0
May 2023	0	0
Apr 2023	0	0
Mar 2023	0	0
Feb 2023	0	0
Jan 2023	0	0
Dec 2022	0	0
Nov 2022	0	0
Date	Guttersen C28-735 API # 05-123-48932 Weld County, CO	

Well Production Search

Home / Well Production

☐ API # contains 05-123-48931



★ Focus

Display all

Display ▾

Download

Date	Guttersen C28-745 API # 05-123-48931 Weld County, CO	
	Oil Prod (BBLs)	Gas Prod (MCF)
	Oct 2024	11,67576,673
	Sep 2024	13,27569,722
	Aug 2024	16,10687,109
	Jul 2024	19,70684,819
	Jun 2024	21,58377,681
Date	Guttersen C28-745 API # 05-123-48931 Weld County, CO	

Date	Guttersen C28-745 API # 05-123-48931 Weld County, CO	
	Oil Prod (BBLs)	Gas Prod (MCF)
May 2024	5,243	17,248
Apr 2024	0	0
Mar 2024	0	0
Feb 2024	0	0
Jan 2024	0	0
Dec 2023	0	0
Nov 2023	0	0
Oct 2023	0	0
Sep 2023	0	0
Aug 2023	0	0
Jul 2023	0	0
Jun 2023	0	0
May 2023	0	0
Apr 2023	0	0
Mar 2023	0	0
Feb 2023	0	0
Jan 2023	0	0
Dec 2022	0	0
Nov 2022	0	0
Date	Guttersen C28-745 API # 05-123-48931 Weld County, CO	



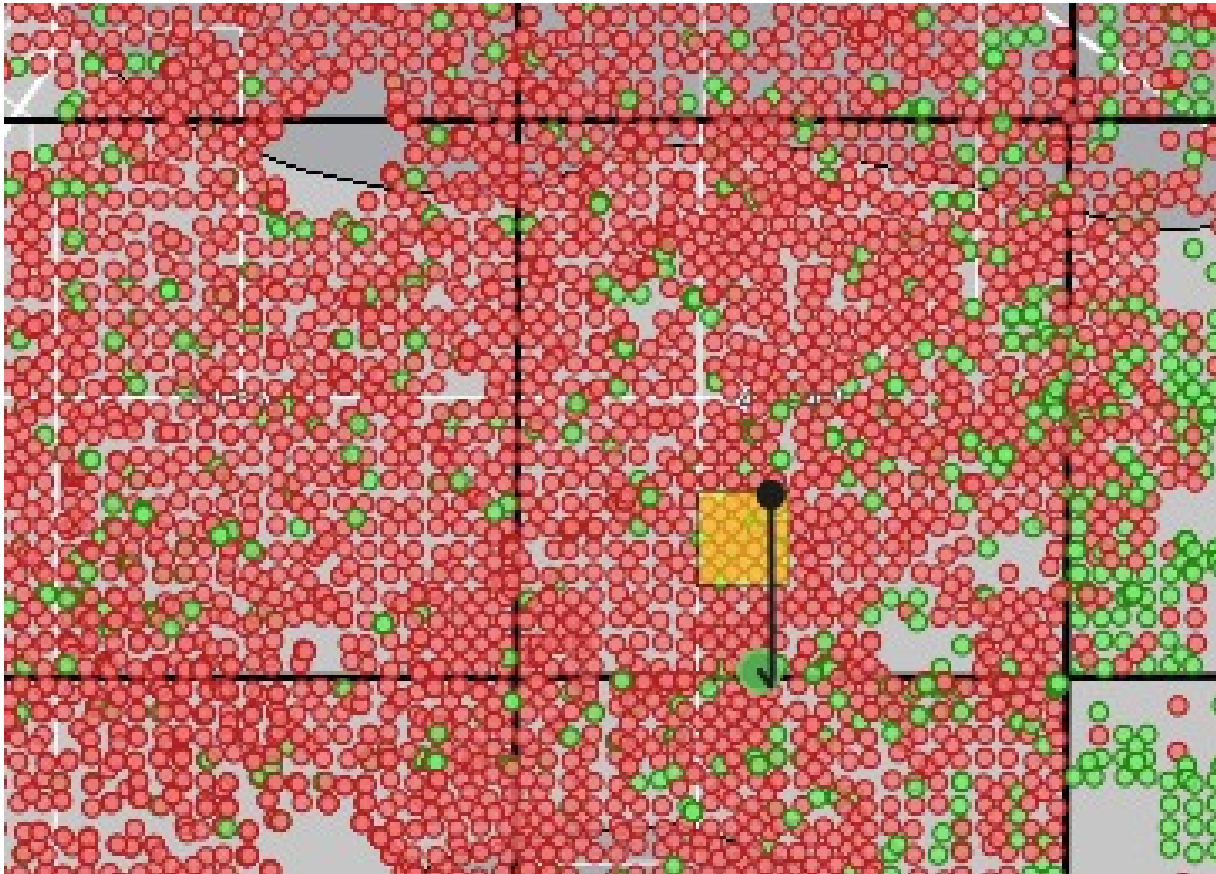
Maps



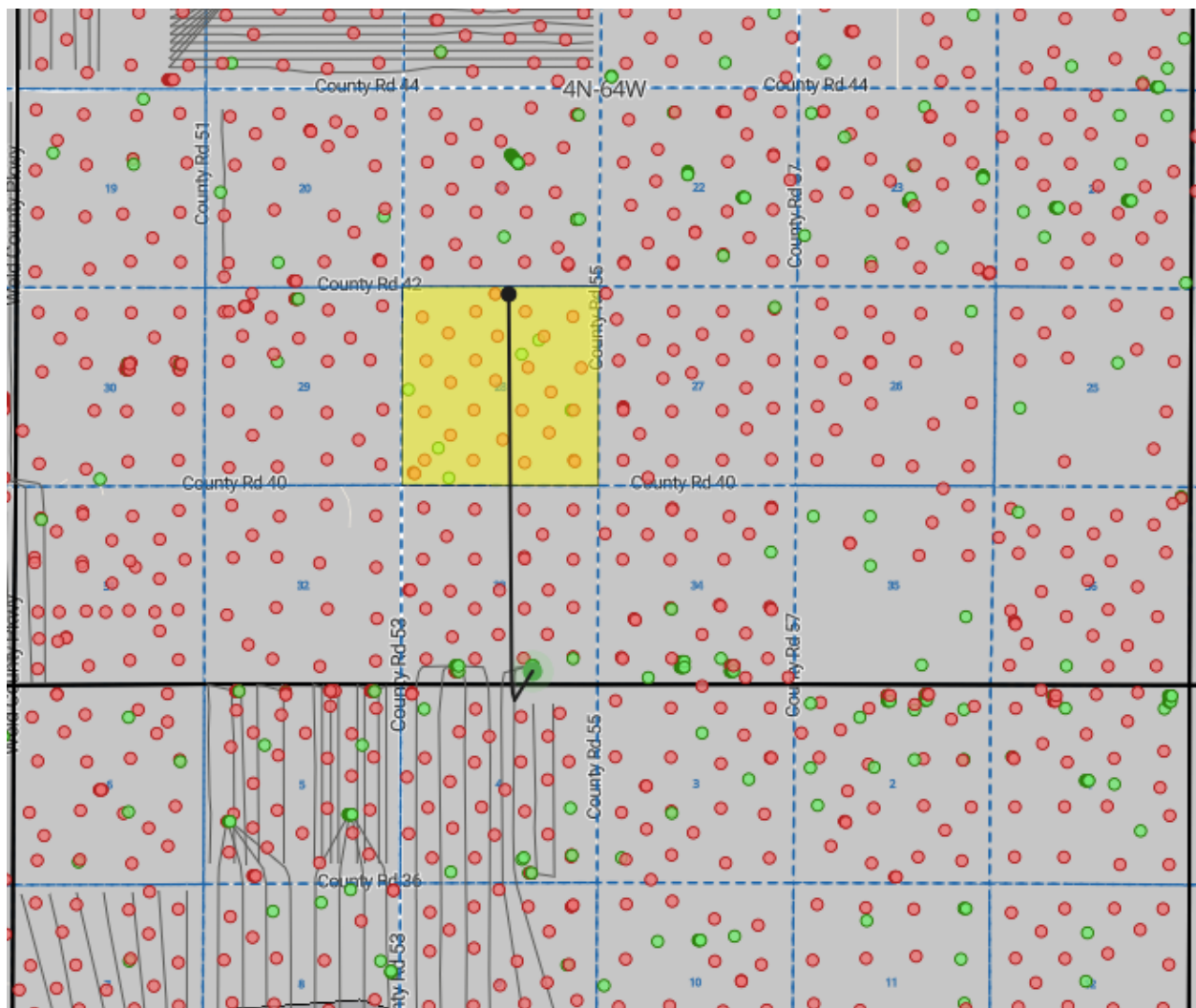
Guttersen Weld, CO



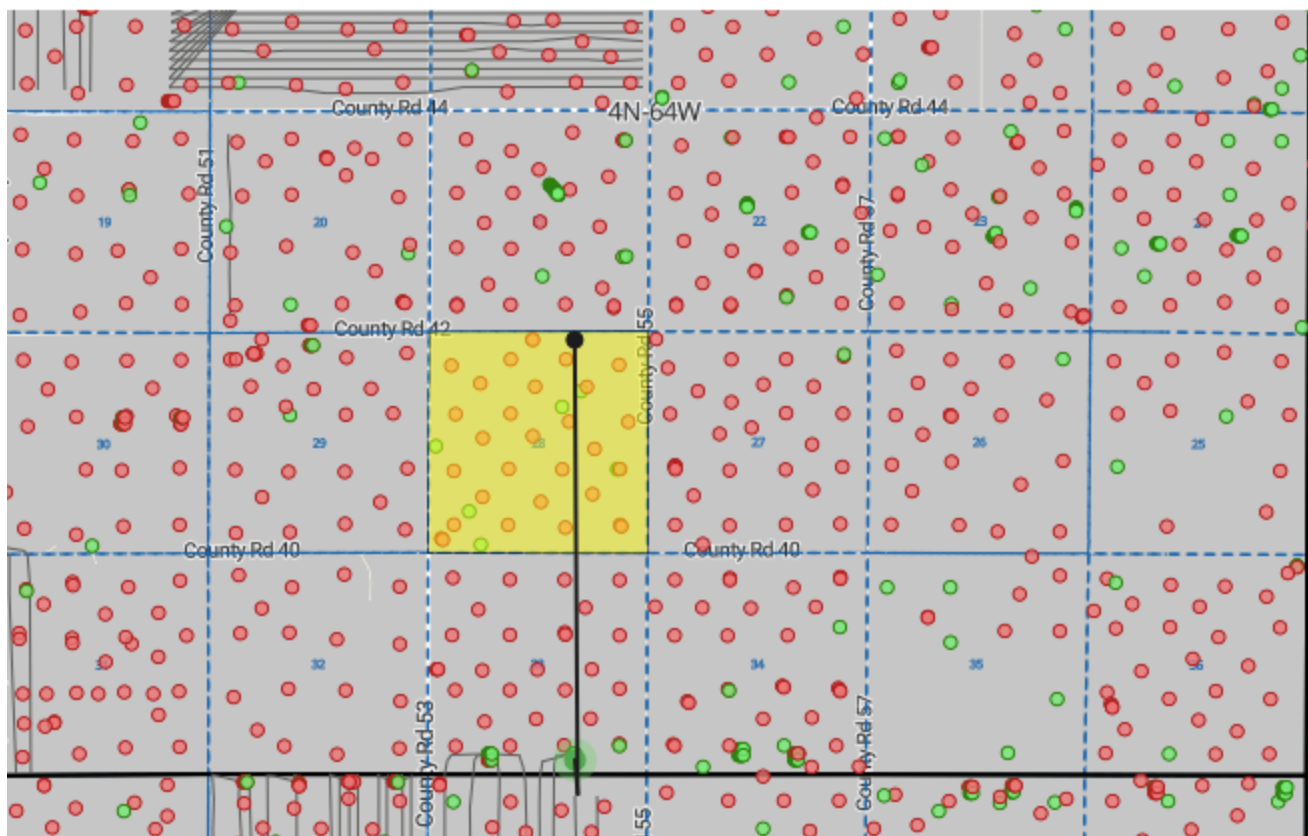
Guttersen Weld, CO



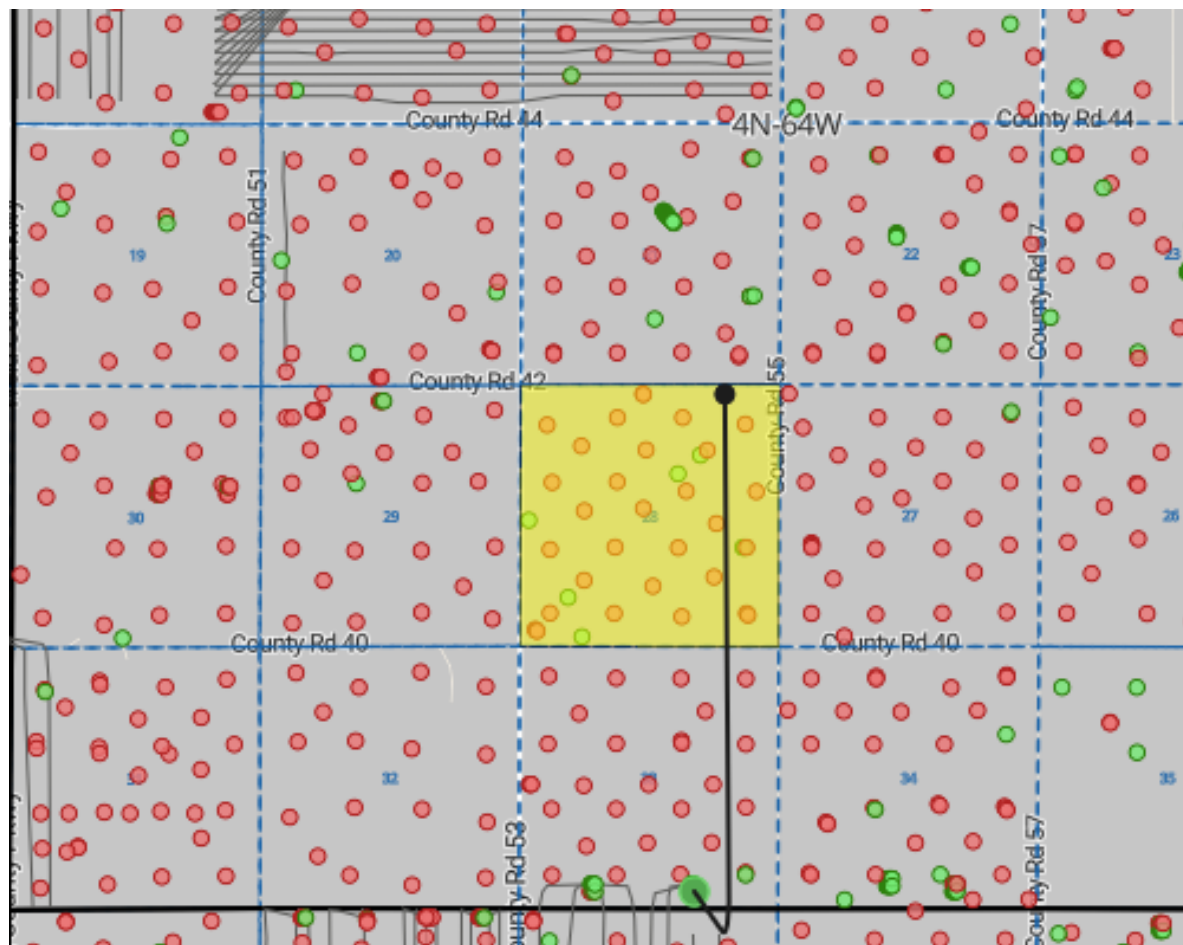
Guttersen C28-745 Weld, CO



Guttersen C28-735 Weld, CO



Guttersen C28-725 Weld, CO





Misc. Info



**ASSIGNMENT OF LANDOWNER ROYALTY INTEREST
(WELLBORE ONLY)**

[REDACTED], hereinafter called Assignor (whether one or more), for and in consideration of the sum of Ten and More Dollars (\$10.00) cash in hand paid and other good and valuable consideration, the receipt and sufficiency of which are hereby acknowledged, does hereby grant, bargain, sell, convey, transfer, assign and deliver unto

hereinafter called Assignee (whether one or more), an undivided **Twenty-Five Percent (25%) of Assignor's right, title and interest** in and to the landowner royalty interest attributable to those certain wells described below, payable under the terms of that certain Oil and Gas Lease dated March 4, 1980, recorded April 18, 1980, under Reception No. 1822531, from Albert Holman, Sr., a married man dealing in his sole and separate property, as lessor, to Energy Minerals Corporation, as lessee, (the "Lease"), attributable to the undivided interest in and to all oil, gas and other minerals owned by Assignor as of November 1, 2018, and acquired under that certain Mineral & Royalty Deed dated effective November 1, 2018, recorded January 15, 2019, under Reception No. 4460174, from HK Resources, LLC, as Grantor, to [REDACTED] as Grantee (the "Mineral Deed"), covering the following described lands situated in Weld County, Colorado (the "Lands") *strictly limited, however, to production from the wells set forth below:*

Township 4 North, Range 64 West, 6th P.M.
Section 28: S/2

The undivided interest in and to the landowner royalty interest hereby conveyed is expressly limited to the landowner royalty interest attributable to the mineral interest of Assignor at the date of the Mineral Deed to production from the following described wells (the "Wells"):

SEE ATTACHED EXHIBIT "A" FOR A DESCRIPTION OF THE WELLS

It is the intent of the Assignor to convey to Assignee (and Assignor does hereby convey to Assignee) an undivided Twenty-Five Percent (25%) of the royalty interest attributable to the mineral interest Assignor owned in the Lands at the effective date of the Mineral Deed covered by the Lease and included in the drilling and production units for the Wells set forth above, *specifically limited to production from the Wells*. No mineral interest in the Lands is conveyed hereby and no royalty interest attributable to other wells (whether currently drilled or drilled in the future) located in drilling and production units including the Lands (or land pooled herewith) are conveyed hereby. The parties hereto agree that this conveyance of Landowner Royalty Interest is expressly limited to production revenues from the Wells attributable to the mineral interest of Assignor at the dates specified above under the terms of the Lease. This assignment is expressly limited to royalties accruing from the Wells under the Lease and in the event of the termination thereof, all interest hereby conveyed shall terminate.

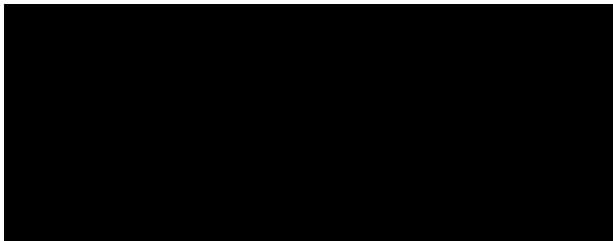
This Assignment does not convey and, to any extent necessary, Assignor excepts and reserves unto itself (i) any and all interest in the minerals in the Lands, and (ii) all landowner royalty interest from any and all other wells whether currently drilled or drilled hereafter on the Lands (or on lands pooled therewith) which include all or part of the Lands in the pooled or designated drilling and production unit.

This sale is made subject to any rights now existing to any lessee or assign under the Lease. Assignee shall bear its proportionate share of all ad valorem, severance, conservation and other similar taxes levied against the interest herein assigned.

Assignor agrees to execute such further assurances as may be requisite for the full and complete enjoyment of the rights herein granted and likewise agrees that Assignee herein shall have the right at any time to redeem for said Assignor by payment, any mortgage, taxes, or other liens that would adversely affect the interests herein conveyed upon default in payment by Assignor, and be subrogated to the rights of the holder thereof.

TO HAVE AND TO HOLD the above described interest with all and singular the rights, privileges, and appurtenances thereunto or in any wise belonging to the said Assignee herein its heirs, successors, personal representatives, administrators, executors, and assigns, and Assignor hereby warrants title as to those parties claiming by through and under Assignee, but not otherwise.

WITNESS my hand this 31st day of October, 2024, but for the purpose of cash sales made effective at 7:00 a.m. on December 1st, 2024.

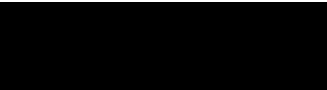


ACKNOWLEDGMENT

STATE OF Illinois)
) ss.
COUNTY OF Cook)

The foregoing instrument was acknowledged before me this 31st day of October, 2024, by  LLC, on behalf of said company.

Witness my hand and official seal.



Notary Public - Signature

March 4 2028
Commission Expiration Date



EXHIBIT “A”

Well Name	API Number	Surface Location	Drilling Unit
Guttersen C28-725	05-123-48933	SWSE-33-4N-64W	28-4N-64W: ALL 33-4N-64W: ALL
Guttersen C28-735	05-123-48932	SWSE-33-4N-64W	28-4N-64W: ALL 33-4N-64W: ALL
Guttersen C28-745	05-123-48931	SWSE-33-4N-64W	28-4N-64W: ALL 33-4N-64W: ALL



Conveyance Document

Please note the following draft deed/assignment has been prepared by the seller in advance of sale. The successful buyer agrees to accept title to the lots pursuant to said deeds or assignments. Seller shall not be obligated or required to modify or change said deeds or assignments unless a correction is required to properly convey the interests being sold.

ASSIGNMENT OF WELLBORE INTEREST

STATE OF COLORADO

§

KNOWN ALL MEN BY THESE PRESENTS:

COUNTY OF WELD

§

§

THAT, [REDACTED], whose address is [REDACTED] [REDACTED] ("Assignor"), for Ten Dollars (\$10.00) and other good and valuable consideration, the receipt and sufficiency of which are hereby acknowledged, does hereby grant, bargain, sell, assign, transfer and convey to

hereinafter called "Assignee", whether one or more, an undivided **One-Eighth (12.5% of 100% as of December 1, 2024)** of Assignor's right, title, and interest in and to the landowner royalty interest attributable to those certain wells described below, payable under the terms of that certain Oil and Gas Lease dated March 4, 1980, recorded April 19, 1980, under Reception No. 1822531, from Albert Holman, Sr., a married man dealing in his sole and separate property, as lessor, to Energy Minerals Corporation, as lessee, (the "Lease"), attributable to the undivided interest in and to all oil, gas and other minerals owned by Assignor as of December 1, 2024, and acquired under that certain Assignment of Landowner Royalty Interest (Wellbore Only) dated effective December 1, 2024, recorded December 18, 2024, under Reception No. 5000670, from Hydrocarbon Minerals 3, LLC, as Assignor, to Invest Energy, LLC, as Assignee (the "Assignment"), covering the following described lands situated in Weld County, Colorado (the "Lands") strictly limited, however, to production from the wells set forth below:

Township 4 North, Range 64 West, 6th P.M.
Section 28: S/2

The undivided interest in and to the landowner royalty interest hereby conveyed is expressly limited to the landowner royalty interest attributable to the mineral interest of Assignor at the date of the Assignment to production from the following described wells (the "Wells"):

SEE ATTACHED EXHIBIT "A" FOR A DESCRIPTION OF THE WELLS

It is the intent of the Assignor to convey to Assignee (and Assignor does hereby convey to Assignee) an undivided **One-Eighth (12.5%)** of the royalty interest attributable to the mineral interest Assignor owned in the Lands at the effective date of the Assignment covered by the Lease and included in the drilling and production units for the Wells set forth above, **specifically limited to production from the Wells**. No mineral interest in the Lands is conveyed hereby and no royalty interest attributable to other wells (whether currently drilled or drilled in the future) located in drilling and production units including the Lands (or land pooled herewith) are conveyed hereby. The parties hereto agree that this conveyance of

Lot # _____

Landowner Royalty Interest is expressly limited to production revenues from the Wells attributable to the mineral interest of Assignor at the dates specified above under the terms of the Lease. This assignment is expressly limited to royalties accruing from the Wells under the Lease and in the event of the termination thereof, all interest hereby conveyed shall terminate.

This Assignment does not convey and, to any extent necessary, Assignor excepts and reserves unto itself (i) any and all interest in the minerals in the Lands, and (ii) all landowner royalty interest from any and all other wells whether currently drilled or drilled hereafter on the Lands (or on lands pooled therewith) which include all or part of the Lands in the pooled or designated drilling and production unit.

EXECUTED on the acknowledgment date below, but **EFFECTIVE as of May 1, 2025** (the "Effective Date") and therefore Assignee is entitled to the interests conveyed hereby on and after the Effective Date, but not before. Notwithstanding the above, all ad valorem taxes and other property taxes attributable to the interests conveyed herein for the 2025 calendar year shall be the sole responsibility of Assignee. Assignee represents to Assignor that Assignee has taken into account the liability for such ad valorem taxes and property taxes in determining the consideration paid herein.

Assignor: _____
Paul O'Neill, President of Invest Energy, LLC

DIRECT ACKNOWLEDGEMENT

STATE OF KANSAS
COUNTY OF SEDGWICK

This instrument was acknowledged before me on this the _____ of _____, 2025, by **Paul O'Neill, President of Invest Energy, LLC.**

IN WITNESS HEREOF, I have hereunto set my hand and official seal on the day and year first above written.

Signature of Notary

SEAL

Name of Notary

Lot # _____

EXHIBIT "A"

Well Name	API Number	Surface Location	Drilling Unit
Guttersen C28-725	05-123-48933	SWSE-33-4N-64W	28-4N-64W: ALL 33-4N-64W: ALL
Guttersen C28-735	05-123-48932	SWSE-33-4N-64W	28-4N-64W: ALL 33-4N-64W: ALL
Guttersen C28-745	05-123-48931	SWSE-33-4N-64W	28-4N-64W: ALL 33-4N-64W: ALL