

MID-CONTINENT ENERGY EXCHANGE

Oil & Gas Asset Auctions



Data Packet

Drake, George, Hen

66-Well MI/RI Package in
Weld County, CO

In this Document:

[Lot Summary](#)

[Income and Expenses](#)

[Production](#)

[Maps](#)

[Outgoing Conveyance](#)



Summary

Lot Summary

Lease Name:	Drake, George, Hen 66-Well Package + 1 Well Drilling
County/State:	Weld, CO
Asset Type:	Mineral/Royalty Interest
Legal Description:	SE/4 Sec 9-4N-64W
API:	See next page
Decimal Interest:	0.000007996
Net Monthly Income:	\$319.83
Operator:	PDC Energy

Disclaimer: Bidders must conduct their own due diligence prior to bidding at the auction. Bidders shall rely upon their own evaluations of the properties and not upon any representation either oral or written provided here. This is a summary of information provided by the seller to Mid-Continent Energy Exchange.

Well Data

Property/Well Name	API Number	Producing, Non-Producing, or Shut In	Owner NRI	Conveyed 1/10th
Drake 01N	05-123-51826	Producing	0.00007996	0.000007996
Drake 02N	05-123-51832	Producing	0.00007996	0.000007996
Drake 03N	05-123-51830	Producing	0.00007996	0.000007996
Drake 04NA	05-123-51833	Producing	0.00007996	0.000007996
Drake 05N	05-123-51818	Producing	0.00007996	0.000007996
Drake 06N	05-123-51810	Non Producing	0.00007996	0.000007996
Drake 07N	05-123-51811	Producing	0.00007996	0.000007996
Drake 08N	05-123-51831	Producing	0.00007996	0.000007996
Drake 09NA	05-123-51828	Producing	0.00007996	0.000007996
Drake 10N	05-123-51821	Producing	0.00007996	0.000007996
Drake 11N	05-123-51820	Producing	0.00007996	0.000007996
Drake 12N	05-123-51816	Producing	0.00007996	0.000007996
Drake 13N	05-123-51827	Producing	0.00007996	0.000007996
Drake 14NA	05-123-51817	Producing	0.00007996	0.000007996
Drake 15N	05-123-51814	Producing	0.00007996	0.000007996
Drake 16N	05-123-51824	Producing	0.00007996	0.000007996
Drake 17N	05-123-51815	Producing	0.00007996	0.000007996
Drake 18N	05-123-51823	Producing	0.00007996	0.000007996
Drake 19NA	05-123-51819	Producing	0.00007996	0.000007996
Drake 20N	05-123-51812	Producing	0.00007996	0.000007996
Drake 21N	05-123-51822	Producing	0.00007996	0.000007996
Drake 22N	05-123-51829	Producing	0.00007996	0.000007996
Drake 23N	05-123-51825	Producing	0.00007996	0.000007996
Drake 24N	05-123-51813	Producing	0.00007996	0.000007996
George 01N	05-123-51766	Producing	0.00007996	0.000007996
George 02N	05-123-51765	Producing	0.00007996	0.000007996
George 03NA	05-123-51782	Producing	0.00007996	0.000007996
George 04N	05-123-51777	Producing	0.00007996	0.000007996
George 05N	05-123-51771	Producing	0.00007996	0.000007996
George 06N	05-123-51776	Non Producing	0.00007996	0.000007996
George 07NA	05-123-51774	Producing	0.00007996	0.000007996
George 08N	05-123-51775	Producing	0.00007996	0.000007996
George 09N	05-123-51779	Producing	0.00007996	0.000007996
George 10N	05-123-51767	Producing	0.00007996	0.000007996
George 11N	05-123-51786	Producing	0.00007996	0.000007996
George 12N	05-123-51768	Producing	0.00007996	0.000007996
George 13N	05-123-51787	Producing	0.00007996	0.000007996
George 14N	05-123-51769	Producing	0.00007996	0.000007996
George 15NA	05-123-51773	Producing	0.00007996	0.000007996
George 16N	05-123-51784	Producing	0.00007996	0.000007996
George 17N	05-123-51781	Producing	0.00007996	0.000007996
George 18N	05-123-51772	Producing	0.00007996	0.000007996
George 19NA	05-123-51780	Producing	0.00007996	0.000007996
George 20N	05-123-51785	Producing	0.00007996	0.000007996
George 21N	05-123-51778	Non Producing	0.00007996	0.000007996
George 22N	05-123-51770	Producing	0.00007996	0.000007996
Hen 01N	05-123-51800	Producing	0.00007996	0.000007996
Hen 02N	05-123-51795	Producing	0.00007996	0.000007996
Hen 03N	05-123-51809	Producing	0.00007996	0.000007996

Well Data

Property/Well Name	API Number	Producing, Non-Producing, or Shut In	Owner NRI	Conveyed 1/10th
Hen 04N	05-123-51805	Producing	0.00007996	0.000007996
Hen 05N	05-123-51799	Producing	0.00007996	0.000007996
Hen 06NHS	05-123-51801	Producing	0.00007996	0.000007996
Hen 07N	05-123-51796	Producing	0.00007996	0.000007996
Hen 08N	05-123-51790	Producing	0.00007996	0.000007996
Hen 09N	05-123-51789	Producing	0.00007996	0.000007996
Hen 10N	05-123-51807	Producing	0.00007996	0.000007996
Hen 12NHS	05-123-51791	Producing	0.00007996	0.000007996
Hen 13N	05-123-51803	Producing	0.00007996	0.000007996
Hen 14N	05-123-51806	Producing	0.00007996	0.000007996
Hen 15N	05-123-51797	Producing	0.00007996	0.000007996
Hen 16N	05-123-51793	Producing	0.00007996	0.000007996
Hen 18N	05-123-51794	Producing	0.00007996	0.000007996
Hen 19N	05-123-51802	Producing	0.00007996	0.000007996
Hen 20NA	05-123-51792	Producing	0.00007996	0.000007996
Hen 21N	05-123-51798	Producing	0.00007996	0.000007996
Hen 22N	05-123-51788	Producing	0.00007996	0.000007996



Income and Expenses

Summary

4 months income info

Net Income: \$1,279.31

Per Month: \$319.83

Monthly Revenue Breakdown		
Production Month	Owner Net Revenue	Conveyed 1/10th
Oct-24	\$2,688.46	\$268.85
Nov-24	\$2,577.00	\$257.70
Dec-24	\$3,842.21	\$384.22
Jan-25	\$3,685.38	\$368.54
Monthly Average	\$3,198.26	\$319.83



Revenue Statement

Owner**Operator**

CHEVRON U.S.A. INC. (CUSA) ON BEHALF OF THE FOLLOWING ENTITIES
 Chevron U.S.A. Inc. (CUSA); Chevron Midcontinent, L.P.; Noble Energy, Inc.; PDC Energy, Inc.; PDC Permian, Inc. and Union Oil Company of California
 Attn: Royalty Disbursements
 P.O. Box 4791
 Houston, TX 77210-4791
 1-866-212-1212 Monday through Friday

Check

Check Number E006654948
 Check Amount
 Check Date March 28, 2025



EnergyLink can provide this data in Excel, CDEX, or any other requested format. Visit <https://app.energylink.com/Features> to find out more information or call EnergyLink Support at 1-888-573-3364.



Sales Date	Interest Type	Tax or Deduct Code	Owner Interest	Distribution Interest	Property					Owner									
					BTU	Volume	Price	Value	Taxes and Deductions	Amount after Taxes and Deductions	Volume	Value	Taxes and Deductions	Amount after Taxes and Deductions					

Represented Unit of Measure: Gas = MCFs, Plant Products = GALs, Oil = BBLs

Generated on Friday, March 28, 2025 8:42 PM

© 2025 Enverus. All rights reserved. Unauthorized use prohibited.

Sales Date	Interest Type	Tax or Deduct Code	Owner Interest	Distribution Interest	Property						Owner			
					BTU	Volume	Price	Value	Taxes and Deductions	Amount after Taxes and Deductions	Volume	Value	Taxes and Deductions	Amount after Taxes and Deductions

028839-00003 HEN 01N - 22N, State: CO, County: WELD

OIL														
Jun 24	RI	CNCO	0.00039778	0.00039778		10,735.00	74.09	795,304.56	(1,192.96)	794,111.60	4.27	316.35	(0.48)	315.87
Jun 24	RI	SCO1	0.00039778	0.00039778		0.00		0.00	0.00	0.00	0.00	0.00	(3.16)	(3.16)
Jul 24	RI	CNCO	0.00039778	0.00039778		156,340.00	75.80	11,850,249.94	(17,775.38)	11,832,474.56	62.19	4,713.80	(7.07)	4,706.73
Jul 24	RI	SCO1	0.00039778	0.00039778		0.00		0.00	0.00	0.00	0.00	0.00	(47.14)	(47.14)
Aug 24	RI	CNCO	0.00039778	0.00039778		238,190.00	71.62	17,059,016.79	(25,588.53)	17,033,428.26	94.75	6,785.73	(10.19)	6,775.54
Aug 24	RI	SCO1	0.00039778	0.00039778		0.00		0.00	0.00	0.00	0.00	0.00	(67.86)	(67.86)
Sep 24	RI	CNCO	0.00039778	0.00039778		180,100.33	65.50	11,796,713.20	(17,695.08)	11,779,018.12	71.64	4,692.51	(7.03)	4,685.48
Sep 24	RI	SCO1	0.00039778	0.00039778		0.00		0.00	0.00	0.00	0.00	0.00	(46.93)	(46.93)
Oct 24	RI	O06	0.00000000	0.00000000		0.00		0.00	0.00	0.00	0.00	0.00	61.46	61.46
Oct 24	RI	CNCO	0.00039778	0.00039778		0.00		(0.01)	0.03	0.02	0.00	(0.03)	0.01	(0.02)
Oct 24	RI	MKT	0.00039778	0.00039778		0.00		0.00	(0.01)	(0.01)	0.00	0.00	0.00	0.00
Oct 24	RI	TRP	0.00039778	0.00039778		0.00		0.00	(0.02)	(0.02)	0.00	0.00	0.01	0.01
Nov 24	RI	O06	0.00000000	0.00000000		0.00		0.00	0.00	0.00	0.00	0.00	23.93	23.93
Dec 24	RI	CNCO	0.00039778	0.00039778		0.00		(0.01)	0.04	0.03	0.00	0.00	0.01	0.01
Dec 24	RI	MKT	0.00039778	0.00039778		0.00		0.00	0.02	0.02	0.00	0.00	0.00	0.00
Dec 24	RI	TRP	0.00039778	0.00039778		0.00		0.00	0.03	0.03	0.00	0.00	(0.06)	(0.06)
Jan 25	RI	CNCO	0.00039778	0.00039778		0.00		(0.03)	(0.02)	(0.05)	0.00	(0.03)	(0.01)	(0.04)
Jan 25	RI	MKT	0.00039778	0.00039778		0.00		0.00	(0.02)	(0.02)	0.00	0.00	0.00	0.00
Jan 25	RI	TRP	0.00039778	0.00039778		0.00		0.00	0.07	0.07	0.00	0.00	(0.07)	(0.07)
Feb 25	RI	CNCO	0.00039778	0.00039778		75,587.35	70.12	5,300,444.23	(7,531.65)	5,292,912.58	30.07	2,108.46	(3.02)	2,105.44
Feb 25	RI	MKT	0.00039778	0.00039778		0.00		0.00	(9,827.09)	(9,827.09)	0.00	0.00	0.00	0.00
Feb 25	RI	SCO1	0.00039778	0.00039778		0.00		0.00	0.00	0.00	0.00	0.00	(19.97)	(19.97)
Feb 25	RI	TRP	0.00039778	0.00039778		0.00		0.00	(279,366.21)	(279,366.21)	0.00	0.00	(111.06)	(111.06)
Total Property												18,616.79	(238.63)	18,378.16

028839-00004 HEN 01N - 22N, State: CO, County: WELD

GAS														
Oct 24	RI	O06	0.00000000	0.00000000		0.00		0.00	0.00	0.00	0.00	0.00	1.36	1.36
Oct 24	RI	O06	0.00000000	0.00000000		0.00		0.00	0.00	0.00	0.00	0.00	3.12	3.12
Nov 24	RI	CNCO	0.00039778	0.00039778		0.48		190,783.26	(286.16)	190,497.10	0.00	75.85	(0.02)	75.83
Nov 24	RI	PRO	0.00039778	0.00039778		0.00		0.00	(212,806.89)	(212,806.89)	0.00	0.00	(84.67)	(84.67)
Nov 24	RI	SCO1	0.00039778	0.00039778		0.00		0.00	0.00	0.00	0.00	0.00	0.09	0.09
Dec 24	RI	CNCO	0.00039778	0.00039778		0.29		331,329.78	(496.95)	330,832.83	0.00	131.80	(0.40)	131.40
Dec 24	RI	PRO	0.00039778	0.00039778		0.00		0.00	(322,923.42)	(322,923.42)	0.00	0.00	(128.48)	(128.48)
Dec 24	RI	SCO1	0.00039778	0.00039778		0.00		0.00	0.00	0.00	0.00	0.00	(0.03)	(0.03)
Jan 25	RI	CNCO	0.00039778	0.00039778		118,937.00	4.36	519,011.21	(778.51)	518,232.70	47.31	206.46	(0.40)	206.06
Jan 25	RI	SCO1	0.00039778	0.00039778		0.00		0.00	0.00	0.00	0.00	0.00	(2.06)	(2.06)
Jan 25	RI	CNCO	0.00039778	0.00039778		282,107.78	5.62	1,586,007.43	(2,347.84)	1,583,659.59	112.22	630.88	(0.82)	630.06
Jan 25	RI	PRO	0.00039778	0.00039778		0.00		0.00	(364,492.29)	(364,492.29)	0.00	0.00	(145.03)	(145.03)
Jan 25	RI	SCO1	0.00039778	0.00039778		0.00		0.00	0.00	0.00	0.00	0.00	(4.85)	(4.85)

Represented Unit of Measure: Gas = MCFs, Plant Products = GALs, Oil = BBLs

Generated on Friday, March 28, 2025 8:42 PM

					Property					Owner					
Sales Date	Interest Type	Tax or Deduct Code	Owner Interest	Distribution Interest	BTU	Volume	Price	Value	Taxes and Deductions	Amount after Taxes and Deductions	Volume	Value	Taxes and Deductions	Amount after Taxes and Deductions	
Jan 25	RI	TRT	0.00039778	0.00039778		0.00		0.00	(1,396.74)	(1,396.74)	0.00	0.00	(0.53)	(0.53)	
PLANT PRODUCTS															
Oct 24	RI	O06	0.00000000	0.00000000		0.00		0.00	0.00	0.00	0.00	0.00	1.32	1.32	
Oct 24	RI	O06	0.00000000	0.00000000		0.00		0.00	0.00	0.00	0.00	0.00	0.50	0.50	
Oct 24	RI	O06	0.00000000	0.00000000		0.00		0.00	0.00	0.00	0.00	0.00	0.01	0.01	
Nov 24	RI	O06	0.00000000	0.00000000		0.00		0.00	0.00	0.00	0.00	0.00	1.33	1.33	
Nov 24	RI	CNCO	0.00039778	0.00039778		761,144.73	1.10	837,607.32	(1,077.08)	836,530.24	302.77	333.15	(0.14)	333.01	
Nov 24	RI	NGLF	0.00039778	0.00039778		0.00		0.00	(32,613.59)	(32,613.59)	0.00	0.00	(13.04)	(13.04)	
Nov 24	RI	PRO	0.00039778	0.00039778		0.00		0.00	(223,156.38)	(223,156.38)	0.00	0.00	(88.50)	(88.50)	
Nov 24	RI	SCO1	0.00039778	0.00039778		0.00		0.00	0.00	0.00	0.00	0.00	(1.86)	(1.86)	
Nov 24	RI	TRP	0.00039778	0.00039778		0.00		0.00	(114,237.10)	(114,237.10)	0.00	0.00	(45.19)	(45.19)	
Nov 24	RI	O06	0.00000000	0.00000000		0.00		0.00	0.00	0.00	0.00	0.00	0.34	0.34	
Nov 24	RI	CNCO	0.00039778	0.00039778		91,159.86	2.03	184,621.49	(255.47)	184,366.02	36.26	73.41	0.00	73.41	
Nov 24	RI	NGLF	0.00039778	0.00039778		0.00		0.00	(3,906.01)	(3,906.01)	0.00	0.00	(1.58)	(1.58)	
Nov 24	RI	PRO	0.00039778	0.00039778		0.00		0.00	(48,656.24)	(48,656.24)	0.00	0.00	(19.49)	(19.49)	
Nov 24	RI	SCO1	0.00039778	0.00039778		0.00		0.00	0.00	0.00	0.00	0.00	(0.47)	(0.47)	
Nov 24	RI	TRP	0.00039778	0.00039778		0.00		0.00	(13,681.79)	(13,681.79)	0.00	0.00	(5.41)	(5.41)	
Dec 24	RI	CNCO	0.00039778	0.00039778		783,958.10	1.06	829,861.34	(1,046.59)	828,814.75	311.84	330.12	(0.06)	330.06	
Dec 24	RI	NGLF	0.00039778	0.00039778		0.00		0.00	(36,576.43)	(36,576.43)	0.00	0.00	(14.70)	(14.70)	
Dec 24	RI	PRO	0.00039778	0.00039778		0.00		0.00	(219,450.52)	(219,450.52)	0.00	0.00	(87.08)	(87.08)	
Dec 24	RI	SCO1	0.00039778	0.00039778		0.00		0.00	0.00	0.00	0.00	0.00	(1.82)	(1.82)	
Dec 24	RI	TRP	0.00039778	0.00039778		0.00		0.00	(117,661.18)	(117,661.18)	0.00	0.00	(46.74)	(46.74)	
Dec 24	RI	CNCO	0.00039778	0.00039778		89,375.08	1.97	176,497.91	(242.09)	176,255.82	35.55	70.17	0.00	70.17	
Dec 24	RI	NGLF	0.00039778	0.00039778		0.00		0.00	(4,169.85)	(4,169.85)	0.00	0.00	(1.66)	(1.66)	
Dec 24	RI	PRO	0.00039778	0.00039778		0.00		0.00	(45,267.78)	(45,267.78)	0.00	0.00	(18.00)	(18.00)	
Dec 24	RI	SCO1	0.00039778	0.00039778		0.00		0.00	0.00	0.00	0.00	0.00	(0.45)	(0.45)	
Dec 24	RI	TRP	0.00039778	0.00039778		0.00		0.00	(13,413.97)	(13,413.97)	0.00	0.00	(5.34)	(5.34)	
Jan 25	RI	CNCO	0.00039778	0.00039778		750,324.53	1.11	830,104.80	(1,050.93)	829,053.87	298.46	330.51	(0.15)	330.36	
Jan 25	RI	NGLF	0.00039778	0.00039778		0.00		0.00	(31,740.82)	(31,740.82)	0.00	0.00	(12.70)	(12.70)	
Jan 25	RI	PRO	0.00039778	0.00039778		0.00		0.00	(231,764.50)	(231,764.50)	0.00	0.00	(87.98)	(87.98)	
Jan 25	RI	SCO1	0.00039778	0.00039778		0.00		0.00	0.00	0.00	0.00	0.00	(1.86)	(1.86)	
Jan 25	RI	TRP	0.00039778	0.00039778		0.00		0.00	(100,418.61)	(100,418.61)	0.00	0.00	(39.92)	(39.92)	
Jan 25	RI	CNCO	0.00039778	0.00039778		84,162.18	2.00	168,542.91	(229.16)	168,313.75	33.48	67.15	0.00	67.15	
Jan 25	RI	NGLF	0.00039778	0.00039778		0.00		0.00	(3,509.01)	(3,509.01)	0.00	0.00	(1.29)	(1.29)	
Jan 25	RI	PRO	0.00039778	0.00039778		0.00		0.00	(42,761.00)	(42,761.00)	0.00	0.00	(16.89)	(16.89)	
Jan 25	RI	SCO1	0.00039778	0.00039778		0.00		0.00	0.00	0.00	0.00	0.00	(0.45)	(0.45)	
Jan 25	RI	TRP	0.00039778	0.00039778		0.00		0.00	(11,101.34)	(11,101.34)	0.00	0.00	(4.44)	(4.44)	
Jan 25	RI	CNCO	0.00039778	0.00039778		1,171.00	1.63	1,907.15	(2.16)	1,904.99	0.47	0.82	0.00	0.82	
Jan 25	RI	PRO	0.00039778	0.00039778		0.00		0.00	(471.72)	(471.72)	0.00	0.00	(0.06)	(0.06)	
Jan 25	RI	SCO1	0.00039778	0.00039778		0.00		0.00	0.00	0.00	0.00	0.00	(0.01)	(0.01)	
Total Property												2,250.32	(876.50)	1,373.82	

Represented Unit of Measure: Gas = MCFs, Plant Products = GALs, Oil = BBLs

Generated on Friday, March 28, 2025 8:42 PM

© 2025 Enverus. All rights reserved. Unauthorized use prohibited.

Sales Date	Interest Type	Tax or Deduct Code	Owner Interest	Distribution Interest	Property						Owner			
					BTU	Volume	Price	Value	Taxes and Deductions	Amount after Taxes and Deductions	Volume	Value	Taxes and Deductions	Amount after Taxes and Deductions

029924-00003 DRAKE 01N - 24N, State: CO, County: WELD

OIL														
Sep 24	RI	CNCO	0.00039778	0.00039778		82,796.49	65.50	5,423,235.15	(8,134.86)	5,415,100.29	32.93	2,157.25	(3.24)	2,154.01
Sep 24	RI	SCO1	0.00039778	0.00039778		0.00		0.00	0.00	0.00	0.00	0.00	(21.57)	(21.57)
Oct 24	RI	O06	0.00000000	0.00000000		0.00		0.00	0.00	0.00	0.00	0.00	108.89	108.89
Nov 24	RI	O06	0.00000000	0.00000000		0.00		0.00	0.00	0.00	0.00	0.00	52.41	52.41
Jan 25	RI	CNCO	0.00039778	0.00039778		0.00		0.02	0.01	0.03	0.00	(0.04)	0.00	(0.04)
Jan 25	RI	MKT	0.00039778	0.00039778		0.00		0.00	0.01	0.01	0.00	0.00	0.00	0.00
Jan 25	RI	TRP	0.00039778	0.00039778		0.00		0.00	(0.10)	(0.10)	0.00	0.00	0.00	0.00
Feb 25	RI	CNCO	0.00039778	0.00039778		144,570.78	70.12	10,137,799.00	(14,405.18)	10,123,393.82	57.51	4,032.63	(5.69)	4,026.94
Feb 25	RI	MKT	0.00039778	0.00039778		0.00		0.00	(18,795.62)	(18,795.62)	0.00	0.00	0.00	0.00
Feb 25	RI	SCO1	0.00039778	0.00039778		0.00		0.00	0.00	0.00	0.00	0.00	(38.20)	(38.20)
Feb 25	RI	TRP	0.00039778	0.00039778		0.00		0.00	(534,325.51)	(534,325.51)	0.00	0.00	(212.52)	(212.52)
Total Property												6,189.84	(119.92)	6,069.92

029924-00004 DRAKE 01N - 24N, State: CO, County: WELD

GAS														
Oct 24	RI	O06	0.00000000	0.00000000		0.00		0.00	0.00	0.00	0.00	0.00	1.88	1.88
Oct 24	RI	O06	0.00000000	0.00000000		0.00		0.00	0.00	0.00	0.00	0.00	4.16	4.16
Nov 24	RI	CNCO	0.00039778	0.00039778		(0.18)		374,392.38	(561.60)	373,830.78	0.00	148.96	(0.10)	148.86
Nov 24	RI	PRO	0.00039778	0.00039778		0.00		0.00	(417,867.79)	(417,867.79)	0.00	0.00	(166.18)	(166.18)
Nov 24	RI	SCO1	0.00039778	0.00039778		0.00		0.00	0.00	0.00	0.00	0.00	0.17	0.17
Dec 24	RI	CNCO	0.00039778	0.00039778		(1.07)		569,110.42	(853.73)	568,256.69	0.00	226.38	(0.39)	225.99
Dec 24	RI	PRO	0.00039778	0.00039778		0.00		0.00	(554,562.30)	(554,562.30)	0.00	0.00	(220.60)	(220.60)
Dec 24	RI	SCO1	0.00039778	0.00039778		0.00		0.00	0.00	0.00	0.00	0.00	(0.06)	(0.06)
Jan 25	RI	CNCO	0.00039778	0.00039778		218,611.99	4.45	973,242.68	(1,459.85)	971,782.83	86.96	387.09	(0.46)	386.63
Jan 25	RI	SCO1	0.00039778	0.00039778		0.00		0.00	0.00	0.00	0.00	0.00	(3.87)	(3.87)
Jan 25	RI	CNCO	0.00039778	0.00039778		516,687.59	5.64	2,912,743.87	(4,315.51)	2,908,428.36	205.53	1,158.59	(1.62)	1,156.97
Jan 25	RI	PRO	0.00039778	0.00039778		0.00		0.00	(669,480.96)	(669,480.96)	0.00	0.00	(266.32)	(266.32)
Jan 25	RI	SCO1	0.00039778	0.00039778		0.00		0.00	0.00	0.00	0.00	0.00	(8.92)	(8.92)

PLANT PRODUCTS														
Oct 24	RI	O06	0.00000000	0.00000000		0.00		0.00	0.00	0.00	0.00	0.00	1.94	1.94
Oct 24	RI	O06	0.00000000	0.00000000		0.00		0.00	0.00	0.00	0.00	0.00	0.79	0.79

Represented Unit of Measure: Gas = MCFs, Plant Products = GALs, Oil = BBLs

Generated on Friday, March 28, 2025 8:42 PM

Sales Date	Interest Type	Tax or Deduct Code	Owner Interest	Distribution Interest	Property						Owner				
					BTU	Volume	Price	Value	Taxes and Deductions	Amount after Taxes and Deductions	Volume	Value	Taxes and Deductions	Amount after Taxes and Deductions	
Oct 24	RI	O06	0.00000000	0.00000000		0.00		0.00	0.00	0.00	0.00	0.00	0.00	0.01	0.01
Nov 24	RI	O06	0.00000000	0.00000000		0.00		0.00	0.00	0.00	0.00	0.00	0.00	2.68	2.68
Nov 24	RI	CNCO	0.00039778	0.00039778		1,527,716.67	1.10	1,687,941.23	(2,172.37)	1,685,768.86	607.70	671.45	(0.82)	670.63	670.63
Nov 24	RI	NGLF	0.00039778	0.00039778		0.00		0.00	(65,459.61)	(65,459.61)	0.00	0.00	(26.10)	(26.10)	(26.10)
Nov 24	RI	PRO	0.00039778	0.00039778		0.00		0.00	(449,265.44)	(449,265.44)	0.00	0.00	(178.57)	(178.57)	(178.57)
Nov 24	RI	SCO1	0.00039778	0.00039778		0.00		0.00	0.00	0.00	0.00	0.00	(3.75)	(3.75)	(3.75)
Nov 24	RI	TRP	0.00039778	0.00039778		0.00		0.00	(229,288.87)	(229,288.87)	0.00	0.00	(91.11)	(91.11)	(91.11)
Nov 24	RI	O06	0.00000000	0.00000000		0.00		0.00	0.00	0.00	0.00	0.00	0.76	0.76	0.76
Nov 24	RI	CNCO	0.00039778	0.00039778		205,418.82	2.03	416,024.18	(575.71)	415,448.47	81.71	165.48	(0.24)	165.24	165.24
Nov 24	RI	NGLF	0.00039778	0.00039778		0.00		0.00	(8,801.79)	(8,801.79)	0.00	0.00	(3.50)	(3.50)	(3.50)
Nov 24	RI	PRO	0.00039778	0.00039778		0.00		0.00	(109,564.85)	(109,564.85)	0.00	0.00	(43.46)	(43.46)	(43.46)
Nov 24	RI	SCO1	0.00039778	0.00039778		0.00		0.00	0.00	0.00	0.00	0.00	(1.06)	(1.06)	(1.06)
Nov 24	RI	TRP	0.00039778	0.00039778		0.00		0.00	(30,830.49)	(30,830.49)	0.00	0.00	(12.25)	(12.25)	(12.25)
Dec 24	RI	CNCO	0.00039778	0.00039778		1,498,240.83	1.05	1,573,118.29	(1,983.75)	1,571,134.54	595.97	625.84	(0.84)	625.00	625.00
Dec 24	RI	NGLF	0.00039778	0.00039778		0.00		0.00	(69,901.99)	(69,901.99)	0.00	0.00	(27.76)	(27.76)	(27.76)
Dec 24	RI	PRO	0.00039778	0.00039778		0.00		0.00	(393,831.85)	(393,831.85)	0.00	0.00	(156.59)	(156.59)	(156.59)
Dec 24	RI	SCO1	0.00039778	0.00039778		0.00		0.00	0.00	0.00	0.00	0.00	(3.52)	(3.52)	(3.52)
Dec 24	RI	TRP	0.00039778	0.00039778		0.00		0.00	(224,865.00)	(224,865.00)	0.00	0.00	(89.47)	(89.47)	(89.47)
Dec 24	RI	CNCO	0.00039778	0.00039778		203,726.89	1.94	395,491.88	(542.11)	394,949.77	81.04	157.30	(0.08)	157.22	157.22
Dec 24	RI	NGLF	0.00039778	0.00039778		0.00		0.00	(9,505.08)	(9,505.08)	0.00	0.00	(3.78)	(3.78)	(3.78)
Dec 24	RI	PRO	0.00039778	0.00039778		0.00		0.00	(96,042.80)	(96,042.80)	0.00	0.00	(38.19)	(38.19)	(38.19)
Dec 24	RI	SCO1	0.00039778	0.00039778		0.00		0.00	0.00	0.00	0.00	0.00	(1.03)	(1.03)	(1.03)
Dec 24	RI	TRP	0.00039778	0.00039778		0.00		0.00	(30,576.56)	(30,576.56)	0.00	0.00	(12.19)	(12.19)	(12.19)
Jan 25	RI	CNCO	0.00039778	0.00039778		1,418,357.42	1.12	1,585,766.98	(2,011.50)	1,583,755.48	564.19	630.79	(0.60)	630.19	630.19
Jan 25	RI	NGLF	0.00039778	0.00039778		0.00		0.00	(60,074.14)	(60,074.14)	0.00	0.00	(23.87)	(23.87)	(23.87)
Jan 25	RI	PRO	0.00039778	0.00039778		0.00		0.00	(441,740.43)	(441,740.43)	0.00	0.00	(168.43)	(168.43)	(168.43)
Jan 25	RI	SCO1	0.00039778	0.00039778		0.00		0.00	0.00	0.00	0.00	0.00	(3.56)	(3.56)	(3.56)
Jan 25	RI	TRP	0.00039778	0.00039778		0.00		0.00	(190,056.64)	(190,056.64)	0.00	0.00	(75.63)	(75.63)	(75.63)
Jan 25	RI	CNCO	0.00039778	0.00039778		176,825.43	2.00	354,072.42	(481.51)	353,590.91	70.34	140.80	(0.02)	140.78	140.78
Jan 25	RI	NGLF	0.00039778	0.00039778		0.00		0.00	(7,369.68)	(7,369.68)	0.00	0.00	(2.94)	(2.94)	(2.94)
Jan 25	RI	PRO	0.00039778	0.00039778		0.00		0.00	(89,651.85)	(89,651.85)	0.00	0.00	(35.73)	(35.73)	(35.73)
Jan 25	RI	SCO1	0.00039778	0.00039778		0.00		0.00	0.00	0.00	0.00	0.00	(0.93)	(0.93)	(0.93)
Jan 25	RI	TRP	0.00039778	0.00039778		0.00		0.00	(23,315.51)	(23,315.51)	0.00	0.00	(9.25)	(9.25)	(9.25)
Jan 25	RI	CNCO	0.00039778	0.00039778		2,268.00	1.63	3,693.83	(4.17)	3,689.66	0.90	1.44	0.00	1.44	1.44
Jan 25	RI	PRO	0.00039778	0.00039778		0.00		0.00	(907.58)	(907.58)	0.00	0.00	(0.46)	(0.46)	(0.46)
Jan 25	RI	SCO1	0.00039778	0.00039778		0.00		0.00	0.00	0.00	0.00	0.00	(0.01)	(0.01)	(0.01)
					Total Property						4,314.12 (1,671.87) 2,642.25				

030862-00003 GEORGE 01N - 23N, State: CO, County: WELD

OIL														
Sales Date	Interest Type	Tax or Deduct Code	Owner Interest	Distribution Interest	BTU	Volume	Price	Value	Taxes and Deductions	Amount after Taxes and Deductions	Volume	Value	Taxes and Deductions	Amount after Taxes and Deductions
Feb 25	RI	CNCO	0.00039778	0.00039778		171,342.73	70.12	12,015,139.96	(17,072.78)	11,998,067.18	68.16	4,779.39	(6.82)	4,772.57
Feb 25	RI	MKT	0.00039778	0.00039778		0.00		0.00	(22,276.31)	(22,276.31)	0.00	0.00	0.00	0.00
Feb 25	RI	SCO1	0.00039778	0.00039778		0.00		0.00	0.00	0.00	0.00	0.00	(45.27)	(45.27)
Feb 25	RI	TRP	0.00039778	0.00039778		0.00		0.00	(633,271.24)	(633,271.24)	0.00	0.00	(251.91)	(251.91)
					Total Property						4,779.39 (304.00) 4,475.39			

Represented Unit of Measure: Gas = MCFs, Plant Products = GALs, Oil = BBLs

Generated on Friday, March 28, 2025 8:42 PM

					Property						Owner			
Sales Date	Interest Type	Tax or Deduct Code	Owner Interest	Distribution Interest	BTU	Volume	Price	Value	Taxes and Deductions	Amount after Taxes and Deductions	Volume	Value	Taxes and Deductions	Amount after Taxes and Deductions
030862-00004					GEORGE 01N - 23N, State: CO, County: WELD									
GAS														
Nov 24	RI	CNCO	0.00039778	0.00039778		(0.46)		60,946.36	(91.42)	60,854.94	0.00	24.23	(0.04)	24.19
Nov 24	RI	PRO	0.00039778	0.00039778		0.00		0.00	(72,099.18)	(72,099.18)	0.00	0.00	(28.68)	(28.68)
Nov 24	RI	SCO1	0.00039778	0.00039778		0.00		0.00	0.00	0.00	0.00	0.00	0.04	0.04
Dec 24	RI	CNCO	0.00039778	0.00039778		0.26		489,717.09	(734.51)	488,982.58	0.00	194.85	(0.29)	194.56
Dec 24	RI	PRO	0.00039778	0.00039778		0.00		0.00	(475,817.80)	(475,817.80)	0.00	0.00	(189.28)	(189.28)
Dec 24	RI	SCO1	0.00039778	0.00039778		0.00		0.00	0.00	0.00	0.00	0.00	(0.06)	(0.06)
Jan 25	RI	CNCO	0.00039778	0.00039778		233,468.01	4.64	1,082,581.46	(1,623.83)	1,080,957.63	92.87	430.62	(0.40)	430.22
Jan 25	RI	SCO1	0.00039778	0.00039778		0.00		0.00	0.00	0.00	0.00	0.00	(4.31)	(4.31)
Jan 25	RI	CNCO	0.00039778	0.00039778		555,046.76	5.61	3,116,548.81	(4,616.52)	3,111,932.29	220.79	1,239.71	(1.71)	1,238.00
Jan 25	RI	PRO	0.00039778	0.00039778		0.00		0.00	(678,730.07)	(678,730.07)	0.00	0.00	(269.99)	(269.99)
Jan 25	RI	SCO1	0.00039778	0.00039778		0.00		0.00	0.00	0.00	0.00	0.00	(9.70)	(9.70)
PLANT PRODUCTS														
Nov 24	RI	O06	0.00000000	0.00000000		0.00		0.00	0.00	0.00	0.00	0.00	0.42	0.42
Nov 24	RI	CNCO	0.00039778	0.00039778		247,551.76	1.07	264,133.36	(337.73)	263,795.63	98.47	105.03	(0.09)	104.94
Nov 24	RI	NGLF	0.00039778	0.00039778		0.00		0.00	(10,607.08)	(10,607.08)	0.00	0.00	(4.19)	(4.19)
Nov 24	RI	PRO	0.00039778	0.00039778		0.00		0.00	(70,513.98)	(70,513.98)	0.00	0.00	(27.97)	(27.97)
Nov 24	RI	SCO1	0.00039778	0.00039778		0.00		0.00	0.00	0.00	0.00	0.00	(0.58)	(0.58)
Nov 24	RI	TRP	0.00039778	0.00039778		0.00		0.00	(37,154.02)	(37,154.02)	0.00	0.00	(14.71)	(14.71)
Nov 24	RI	O06	0.00000000	0.00000000		0.00		0.00	0.00	0.00	0.00	0.00	0.10	0.10
Nov 24	RI	CNCO	0.00039778	0.00039778		26,461.93	1.99	52,666.79	(72.75)	52,594.04	10.53	20.94	0.00	20.94
Nov 24	RI	NGLF	0.00039778	0.00039778		0.00		0.00	(1,133.83)	(1,133.83)	0.00	0.00	(0.43)	(0.43)
Nov 24	RI	PRO	0.00039778	0.00039778		0.00		0.00	(13,890.00)	(13,890.00)	0.00	0.00	(5.51)	(5.51)
Nov 24	RI	SCO1	0.00039778	0.00039778		0.00		0.00	0.00	0.00	0.00	0.00	(0.13)	(0.13)
Nov 24	RI	TRP	0.00039778	0.00039778		0.00		0.00	(3,971.56)	(3,971.56)	0.00	0.00	(1.56)	(1.56)
Dec 24	RI	CNCO	0.00039778	0.00039778		1,382,747.59	1.02	1,413,993.91	(1,774.48)	1,412,219.43	550.03	562.41	(0.62)	561.79
Dec 24	RI	NGLF	0.00039778	0.00039778		0.00		0.00	(64,513.49)	(64,513.49)	0.00	0.00	(25.62)	(25.62)
Dec 24	RI	PRO	0.00039778	0.00039778		0.00		0.00	(335,976.28)	(335,976.28)	0.00	0.00	(133.72)	(133.72)
Dec 24	RI	SCO1	0.00039778	0.00039778		0.00		0.00	0.00	0.00	0.00	0.00	(3.21)	(3.21)
Dec 24	RI	TRP	0.00039778	0.00039778		0.00		0.00	(207,531.11)	(207,531.11)	0.00	0.00	(82.52)	(82.52)
Dec 24	RI	CNCO	0.00039778	0.00039778		176,617.21	1.91	337,142.52	(461.43)	336,681.09	70.25	134.11	(0.15)	133.96
Dec 24	RI	NGLF	0.00039778	0.00039778		0.00		0.00	(8,240.25)	(8,240.25)	0.00	0.00	(3.30)	(3.30)
Dec 24	RI	PRO	0.00039778	0.00039778		0.00		0.00	(77,507.98)	(77,507.98)	0.00	0.00	(30.79)	(30.79)
Dec 24	RI	SCO1	0.00039778	0.00039778		0.00		0.00	0.00	0.00	0.00	0.00	(0.89)	(0.89)
Dec 24	RI	TRP	0.00039778	0.00039778		0.00		0.00	(26,507.77)	(26,507.77)	0.00	0.00	(10.54)	(10.54)
Jan 25	RI	CNCO	0.00039778	0.00039778		1,656,826.48	1.11	1,846,709.23	(2,344.19)	1,844,365.04	659.05	734.71	(0.79)	733.92
Jan 25	RI	NGLF	0.00039778	0.00039778		0.00		0.00	(70,397.60)	(70,397.60)	0.00	0.00	(27.94)	(27.94)
Jan 25	RI	PRO	0.00039778	0.00039778		0.00		0.00	(487,608.74)	(487,608.74)	0.00	0.00	(186.63)	(186.63)
Jan 25	RI	SCO1	0.00039778	0.00039778		0.00		0.00	0.00	0.00	0.00	0.00	(4.24)	(4.24)
Jan 25	RI	TRP	0.00039778	0.00039778		0.00		0.00	(222,717.04)	(222,717.04)	0.00	0.00	(88.66)	(88.66)
Jan 25	RI	CNCO	0.00039778	0.00039778		236,759.23	1.97	466,845.73	(634.58)	466,211.15	94.18	185.73	(0.38)	185.35
Jan 25	RI	NGLF	0.00039778	0.00039778		0.00		0.00	(9,876.39)	(9,876.39)	0.00	0.00	(3.91)	(3.91)
Jan 25	RI	PRO	0.00039778	0.00039778		0.00		0.00	(112,320.67)	(112,320.67)	0.00	0.00	(44.72)	(44.72)

Represented Unit of Measure: Gas = MCFs, Plant Products = GALs, Oil = BBLs

Generated on Friday, March 28, 2025 8:42 PM

Sales Date	Interest Type	Tax or Deduct Code	Owner Interest	Distribution Interest	Property					Owner				
					BTU	Volume	Price	Value	Taxes and Deductions	Amount after Taxes and Deductions	Volume	Value	Taxes and Deductions	Amount after Taxes and Deductions
Jan 25	RI	SCO1	0.00039778	0.00039778		0.00		0.00	0.00	0.00	0.00	0.00	(1.25)	(1.25)
Jan 25	RI	TRP	0.00039778	0.00039778		0.00		0.00	(31,245.92)	(31,245.92)	0.00	0.00	(12.45)	(12.45)
Jan 25	RI	CNCO	0.00039778	0.00039778		2,475.00	1.63	4,030.96	(4.59)	4,026.37	0.98	1.62	0.00	1.62
Jan 25	RI	PRO	0.00039778	0.00039778		0.00		0.00	(992.41)	(992.41)	0.00	0.00	(0.40)	(0.40)
Jan 25	RI	SCO1	0.00039778	0.00039778		0.00		0.00	0.00	0.00	0.00	0.00	(0.01)	(0.01)
Total Property												3,633.96	(1,221.81)	2,412.15

Check Number	E006654948	Owner_	Operator	CHEVRON U.S.A. INC. (CUSA) ON BEHALF OF THE FOLLOWING ENTITIES
--------------	------------	--------	----------	--

Legend

Interest Types		
RI - ROYALTY INTEREST		
Tax Codes		
CNCO - CONSERVATION TAX	SCO1 - COLORADO SEVERANCE WITHHOLDING	
Deduction Codes		
F - FUEL	MKT - MARKETING	NGLF - NGL FRACTIONATION
O06 - INTEREST PAID	PRO - PROCESSING	TRP - TRANSPORTATION
TRT - TREATING		



Revenue Statement

Owner**Operator**

CHEVRON U.S.A. INC. (CUSA) ON BEHALF OF THE FOLLOWING ENTITIES
 Chevron U.S.A. Inc. (CUSA); Chevron Midcontinent, L.P.; Noble Energy, Inc.; PDC Energy, Inc.; PDC Permian, Inc. and Union Oil Company of California
 Attn: Royalty Disbursements
 P.O. Box 4791
 Houston, TX 77210-4791
 1-866-212-1212 Monday through Friday

Check

Check Number E006642425
 Check Amount ;
 Check Date February 28, 2025



EnergyLink can provide this data in Excel, CDEX, or any other requested format. Visit <https://app.energylink.com/Features> to find out more information or call EnergyLink Support at 1-888-573-3364.



Sales Date	Interest Type	Tax or Deduct Code	Owner Interest	Distribution Interest	Property					Owner									
					BTU	Volume	Price	Value	Taxes and Deductions	Amount after Taxes and Deductions	Volume	Value	Taxes and Deductions	Amount after Taxes and Deductions					

Represented Unit of Measure: Gas = MCFs, Plant Products = GALs, Oil = BBLs

Generated on Friday, February 28, 2025 1:41 AM

© 2025 Enverus. All rights reserved. Unauthorized use prohibited.

Sales Date	Interest Type	Tax or Deduct Code	Owner Interest	Distribution Interest	Property					Owner			
					BTU	Volume	Price	Value	Taxes and Deductions	Amount after Taxes and Deductions	Volume	Value	Taxes and Deductions

028839-00003		HEN 01N - 22N, State: CO, County: WELD												
OIL														
Oct 24	RI	O06	0.00000000	0.00000000		0.00		0.00	0.00	0.00	0.00	0.00	61.46	61.46
Oct 24	RI	CNCO	0.00039778	0.00039778		151,089.58	71.14	10,748,294.10	(15,322.80)	10,732,971.30	60.10	4,275.48	(6.11)	4,269.37
Oct 24	RI	MKT	0.00039778	0.00039778		0.00		0.00	(19,643.17)	(19,643.17)	0.00	0.00	0.00	0.00

Represented Unit of Measure: Gas = MCFs, Plant Products = GALs, Oil = BBLs

Generated on Friday, February 28, 2025 1:41 AM

Sales Date	Interest Type	Tax or Deduct Code	Owner Interest	Distribution Interest	Property						Owner				
					BTU	Volume	Price	Value	Taxes and Deductions	Amount after Taxes and Deductions	Volume	Value	Taxes and Deductions	Amount after Taxes and Deductions	
Oct 24	RI	SCO1	0.00039778	0.00039778		0.00			0.00	0.00	0.00	0.00	0.00	(40.63)	(40.63)
Oct 24	RI	TRP	0.00039778	0.00039778		0.00			(533,108.55)	(533,108.55)	0.00	0.00	0.00	(212.12)	(212.12)
Nov 24	RI	O06	0.00000000	0.00000000		0.00			0.00	0.00	0.00	0.00	0.00	23.93	23.93
Nov 24	RI	CNCO	0.00039778	0.00039778		120,546.05	68.91	8,306,275.02	(11,822.18)	8,294,452.84	47.95	3,304.05	0.00	(4.72)	3,299.33
Nov 24	RI	MKT	0.00039778	0.00039778		0.00			(15,672.20)	(15,672.20)	0.00	0.00	0.00	0.00	0.00
Nov 24	RI	SCO1	0.00039778	0.00039778		0.00			0.00	0.00	0.00	0.00	0.00	(31.35)	(31.35)
Nov 24	RI	TRP	0.00039778	0.00039778		0.00			(424,814.17)	(424,814.17)	0.00	0.00	0.00	(168.96)	(168.96)
Dec 24	RI	CNCO	0.00039778	0.00039778		109,741.92	68.84	7,554,720.03	(10,692.83)	7,544,027.20	43.65	3,005.11	0.00	(4.25)	3,000.86
Dec 24	RI	MKT	0.00039778	0.00039778		0.00			(14,267.55)	(14,267.55)	0.00	0.00	0.00	0.00	0.00
Dec 24	RI	SCO1	0.00039778	0.00039778		0.00			0.00	0.00	0.00	0.00	0.00	(28.36)	(28.36)
Dec 24	RI	TRP	0.00039778	0.00039778		0.00			(426,182.00)	(426,182.00)	0.00	0.00	0.00	(169.51)	(169.51)
Jan 25	RI	CNCO	0.00039778	0.00039778		91,414.36	73.74	6,741,215.88	(9,608.38)	6,731,607.50	36.36	2,681.57	0.00	(3.89)	2,677.68
Jan 25	RI	MKT	0.00039778	0.00039778		0.00			(11,884.76)	(11,884.76)	0.00	0.00	0.00	0.00	0.00
Jan 25	RI	SCO1	0.00039778	0.00039778		0.00			0.00	0.00	0.00	0.00	0.00	(25.48)	(25.48)
Jan 25	RI	TRP	0.00039778	0.00039778		0.00			(335,607.20)	(335,607.20)	0.00	0.00	0.00	(133.48)	(133.48)
Total Property													13,266.21	(743.47)	12,522.74

028839-00004 HEN 01N - 22N, State: CO, County: WELD

GAS															
Oct 24	RI	CNCO	0.00039778	0.00039778		163,907.00	2.73	447,859.59	(671.79)	447,187.80	65.20	178.18	0.00	178.14	
Oct 24	RI	SCO1	0.00039778	0.00039778		0.00		0.00	0.00	0.00	0.00	0.00	0.00	(1.78)	(1.78)
Oct 24	RI	CNCO	0.00039778	0.00039778		499,000.00	2.06	1,028,691.04	(1,543.06)	1,027,147.98	198.49	409.24	0.00	408.80	
Oct 24	RI	SCO1	0.00039778	0.00039778		0.00		0.00	0.00	0.00	0.00	0.00	0.00	(4.09)	(4.09)
Nov 24	RI	CNCO	0.00039778	0.00039778		129,181.00	2.91	376,458.87	(564.72)	375,894.15	51.39	149.73	0.00	149.69	
Nov 24	RI	SCO1	0.00039778	0.00039778		0.00		0.00	0.00	0.00	0.00	0.00	0.00	(1.50)	(1.50)
Nov 24	RI	CNCO	0.00039778	0.00039778		298,346.00	2.28	679,910.85	(1,019.80)	678,891.05	118.68	270.55	0.00	270.13	
Nov 24	RI	SCO1	0.00039778	0.00039778		0.00		0.00	0.00	0.00	0.00	0.00	0.00	(2.71)	(2.71)
Dec 24	RI	CNCO	0.00039778	0.00039778		135,635.99	3.55	481,301.61	(721.94)	480,579.67	53.95	191.45	0.00	191.34	
Dec 24	RI	SCO1	0.00039778	0.00039778		0.00		0.00	0.00	0.00	0.00	0.00	0.00	(1.91)	(1.91)
Dec 24	RI	CNCO	0.00039778	0.00039778		321,991.00	3.28	1,055,441.50	(1,583.24)	1,053,858.26	128.08	419.77	0.00	419.33	
Dec 24	RI	SCO1	0.00039778	0.00039778		0.00		0.00	0.00	0.00	0.00	0.00	0.00	(4.20)	(4.20)

PLANT PRODUCTS															
Oct 24	RI	CNCO	0.00039778	0.00039778		1,403,115.62	0.60	842,915.81	(643.08)	842,272.73	558.13	336.38	0.00	336.38	
Oct 24	RI	PRO	0.00039778	0.00039778		0.00		0.00	(476,793.84)	(476,793.84)	0.00	0.00	0.00	(164.09)	(164.09)
Oct 24	RI	SCO1	0.00039778	0.00039778		0.00		0.00	0.00	0.00	0.00	0.00	0.00	(1.42)	(1.42)
Oct 24	RI	CNCO	0.00039778	0.00039778		167,703.80	1.33	223,347.41	(246.75)	223,100.66	66.71	88.74	0.00	88.74	
Oct 24	RI	PRO	0.00039778	0.00039778		0.00		0.00	(58,848.00)	(58,848.00)	0.00	0.00	0.00	(23.11)	(23.11)
Oct 24	RI	SCO1	0.00039778	0.00039778		0.00		0.00	0.00	0.00	0.00	0.00	0.00	(0.66)	(0.66)
Oct 24	RI	CNCO	0.00039778	0.00039778		1,703.00	1.54	2,620.77	(3.19)	2,617.58	0.68	0.89	0.00	0.89	
Oct 24	RI	PRO	0.00039778	0.00039778		0.00		0.00	(529.03)	(529.03)	0.00	0.00	0.00	(0.07)	(0.07)
Oct 24	RI	SCO1	0.00039778	0.00039778		0.00		0.00	0.00	0.00	0.00	0.00	0.00	(0.01)	(0.01)
Nov 24	RI	CNCO	0.00039778	0.00039778		92,664.46	0.47	43,852.50	(28.51)	43,823.99	36.86	17.46	0.00	17.46	
Nov 24	RI	PRO	0.00039778	0.00039778		0.00		0.00	(24,842.27)	(24,842.27)	0.00	0.00	0.00	(9.68)	(9.68)
Nov 24	RI	SCO1	0.00039778	0.00039778		0.00		0.00	0.00	0.00	0.00	0.00	0.00	(0.08)	(0.08)
Nov 24	RI	CNCO	0.00039778	0.00039778		12,779.11	1.32	16,893.63	(20.17)	16,873.46	5.08	6.65	0.00	6.65	

Represented Unit of Measure: Gas = MCFs, Plant Products = GALs, Oil = BBLs

Generated on Friday, February 28, 2025 1:41 AM

Sales Date	Interest Type	Tax or Deduct Code	Owner Interest	Distribution Interest	Property					Owner					
					BTU	Volume	Price	Value	Taxes and Deductions	Amount after Taxes and Deductions	Volume	Value	Taxes and Deductions	Amount after Taxes and Deductions	
Nov 24	RI	PRO	0.00039778	0.00039778		0.00			0.00	(3,455.96)	(3,455.96)	0.00	0.00	(1.30)	(1.30)
Nov 24	RI	SCO1	0.00039778	0.00039778		0.00			0.00	0.00	0.00	0.00	0.00	(0.05)	(0.05)
Nov 24	RI	CNCO	0.00039778	0.00039778		1,345.00	1.50	2,021.37	(2.38)	2,018.99	0.54	0.82	0.00	0.82	
Nov 24	RI	PRO	0.00039778	0.00039778		0.00		0.00	(422.84)	(422.84)	0.00	0.00	(0.04)	(0.04)	
Nov 24	RI	SCO1	0.00039778	0.00039778		0.00		0.00	0.00	0.00	0.00	0.00	(0.01)	(0.01)	
Dec 24	RI	CNCO	0.00039778	0.00039778		94,140.09	0.48	44,952.14	(37.57)	44,914.57	37.45	18.31	0.00	18.31	
Dec 24	RI	PRO	0.00039778	0.00039778		0.00		0.00	(28,318.62)	(28,318.62)	0.00	0.00	(7.24)	(7.24)	
Dec 24	RI	SCO1	0.00039778	0.00039778		0.00		0.00	0.00	0.00	0.00	0.00	(0.07)	(0.07)	
Dec 24	RI	CNCO	0.00039778	0.00039778		12,252.56	1.30	15,929.21	(18.27)	15,910.94	4.87	6.36	0.00	6.36	
Dec 24	RI	PRO	0.00039778	0.00039778		0.00		0.00	(3,753.70)	(3,753.70)	0.00	0.00	(1.32)	(1.32)	
Dec 24	RI	SCO1	0.00039778	0.00039778		0.00		0.00	0.00	0.00	0.00	0.00	(0.05)	(0.05)	
Dec 24	RI	CNCO	0.00039778	0.00039778		1,406.00	1.48	2,076.35	(2.39)	2,073.96	0.56	0.84	0.00	0.84	
Dec 24	RI	PRO	0.00039778	0.00039778		0.00		0.00	(486.93)	(486.93)	0.00	0.00	(0.04)	(0.04)	
Dec 24	RI	SCO1	0.00039778	0.00039778		0.00		0.00	0.00	0.00	0.00	0.00	(0.01)	(0.01)	
Total Property												2,095.37	(226.93)	1,868.44	

Represented Unit of Measure: Gas = MCFs, Plant Products = GALs, Oil = BBLs

Generated on Friday, February 28, 2025 1:41 AM

© 2025 Enverus. All rights reserved. Unauthorized use prohibited.

Sales Date	Interest Type	Tax or Deduct Code	Owner Interest	Distribution Interest	Property					Owner			
					BTU	Volume	Price	Value	Taxes and Deductions	Amount after Taxes and Deductions	Volume	Value	Taxes and Deductions

029924-00003														DRAKE 01N - 24N, State: CO, County: WELD													
OIL																											
Oct 24	RI	O06	0.00000000	0.00000000		0.00		0.00	0.00	0.00	0.00	0.00	0.00	108.89	108.89												
Oct 24	RI	CNCO	0.00039778	0.00039778		267,650.93	71.14	19,040,299.88	(27,143.84)	19,013,156.04	106.47	7,573.89	(10.80)	7,563.09													
Oct 24	RI	MKT	0.00039778	0.00039778		0.00		0.00	(34,797.27)	(34,797.27)	0.00	0.00	0.00	0.00													
Oct 24	RI	SCO1	0.00039778	0.00039778		0.00		0.00	0.00	0.00	0.00	0.00	(71.98)	(71.98)													
Oct 24	RI	TRP	0.00039778	0.00039778		0.00		0.00	(944,386.74)	(944,386.74)	0.00	0.00	(375.62)	(375.62)													
Nov 24	RI	O06	0.00000000	0.00000000		0.00		0.00	0.00	0.00	0.00	0.00	52.41	52.41													
Nov 24	RI	CNCO	0.00039778	0.00039778		264,040.93	68.91	18,194,986.78	(25,895.13)	18,169,091.65	105.03	7,237.61	(10.22)	7,227.39													
Nov 24	RI	MKT	0.00039778	0.00039778		0.00		0.00	(34,327.97)	(34,327.97)	0.00	0.00	0.00	0.00													
Nov 24	RI	SCO1	0.00039778	0.00039778		0.00		0.00	0.00	0.00	0.00	0.00	(68.67)	(68.67)													
Nov 24	RI	TRP	0.00039778	0.00039778		0.00		0.00	(931,587.46)	(931,587.46)	0.00	0.00	(370.55)	(370.55)													
Dec 24	RI	CNCO	0.00039778	0.00039778		226,223.04	68.88	15,583,234.63	(22,118.78)	15,561,115.85	89.99	6,198.63	(8.82)	6,189.81													

Represented Unit of Measure: Gas = MCFs, Plant Products = GALs, Oil = BBLs

Generated on Friday, February 28, 2025 1:41 AM

					Property					Owner				
Sales Date	Interest Type	Tax or Deduct Code	Owner Interest	Distribution Interest	BTU	Volume	Price	Value	Taxes and Deductions	Amount after Taxes and Deductions	Volume	Value	Taxes and Deductions	Amount after Taxes and Deductions
Dec 24	RI	MKT	0.00039778	0.00039778		0.00		0.00	(29,411.28)	(29,411.28)	0.00	0.00	0.00	0.00
Dec 24	RI	SCO1	0.00039778	0.00039778		0.00		0.00	0.00	0.00	0.00	0.00	(58.66)	(58.66)
Dec 24	RI	TRP	0.00039778	0.00039778		0.00		0.00	(837,381.70)	(837,381.70)	0.00	0.00	(333.06)	(333.06)
Jan 25	RI	CNCO	0.00039778	0.00039778		187,108.32	73.74	13,798,024.44	(19,666.61)	13,778,357.83	74.43	5,488.61	(7.78)	5,480.83
Jan 25	RI	MKT	0.00039778	0.00039778		0.00		0.00	(24,325.98)	(24,325.98)	0.00	0.00	0.00	0.00
Jan 25	RI	SCO1	0.00039778	0.00039778		0.00		0.00	0.00	0.00	0.00	0.00	(52.15)	(52.15)
Jan 25	RI	TRP	0.00039778	0.00039778		0.00		0.00	(686,925.86)	(686,925.86)	0.00	0.00	(273.26)	(273.26)
Total Property											26,498.74	(1,480.27)	25,018.47	

029924-0004 DRAKE 01N - 24N, State: CO, County: WELD

GAS														
Oct 24	RI	CNCO	0.00039778	0.00039778		217,563.00	2.84	618,766.73	(928.13)	617,838.60	86.54	246.17	(0.35)	245.82
Oct 24	RI	SCO1	0.00039778	0.00039778		0.00		0.00	0.00	0.00	0.00	0.00	(2.46)	(2.46)
Oct 24	RI	CNCO	0.00039778	0.00039778		658,361.00	2.08	1,371,514.11	(2,057.29)	1,369,456.82	261.88	545.58	(0.76)	544.82
Oct 24	RI	SCO1	0.00039778	0.00039778		0.00		0.00	0.00	0.00	0.00	0.00	(5.46)	(5.46)
Nov 24	RI	CNCO	0.00039778	0.00039778		252,675.01	3.00	758,916.87	(1,138.36)	757,778.51	100.51	301.88	(0.44)	301.44
Nov 24	RI	SCO1	0.00039778	0.00039778		0.00		0.00	0.00	0.00	0.00	0.00	(3.02)	(3.02)
Nov 24	RI	CNCO	0.00039778	0.00039778		581,285.00	2.30	1,334,824.35	(2,002.26)	1,332,822.09	231.22	530.95	(0.80)	530.15
Nov 24	RI	SCO1	0.00039778	0.00039778		0.00		0.00	0.00	0.00	0.00	0.00	(5.31)	(5.31)
Dec 24	RI	CNCO	0.00039778	0.00039778		245,459.00	3.67	901,853.04	(1,352.80)	900,500.24	97.64	358.74	(0.46)	358.28
Dec 24	RI	SCO1	0.00039778	0.00039778		0.00		0.00	0.00	0.00	0.00	0.00	(3.59)	(3.59)
Dec 24	RI	CNCO	0.00039778	0.00039778		588,291.00	3.30	1,944,051.61	(2,916.06)	1,941,135.55	234.01	773.29	(1.00)	772.29
Dec 24	RI	SCO1	0.00039778	0.00039778		0.00		0.00	0.00	0.00	0.00	0.00	(7.73)	(7.73)

PLANT PRODUCTS														
Oct 24	RI	CNCO	0.00039778	0.00039778		1,952,771.32	0.60	1,179,313.16	(953.14)	1,178,360.02	776.77	469.76	0.00	469.76
Oct 24	RI	PRO	0.00039778	0.00039778		0.00		0.00	(624,736.02)	(624,736.02)	0.00	0.00	(215.66)	(215.66)
Oct 24	RI	SCO1	0.00039778	0.00039778		0.00		0.00	0.00	0.00	0.00	0.00	(2.15)	(2.15)
Oct 24	RI	CNCO	0.00039778	0.00039778		257,688.81	1.33	343,189.20	(388.46)	342,800.74	102.50	136.57	0.00	136.57
Oct 24	RI	PRO	0.00039778	0.00039778		0.00		0.00	(84,186.56)	(84,186.56)	0.00	0.00	(33.51)	(33.51)
Oct 24	RI	SCO1	0.00039778	0.00039778		0.00		0.00	0.00	0.00	0.00	0.00	(1.03)	(1.03)
Oct 24	RI	CNCO	0.00039778	0.00039778		2,298.00	1.54	3,536.43	(4.20)	3,532.23	0.91	1.36	0.00	1.36
Oct 24	RI	PRO	0.00039778	0.00039778		0.00		0.00	(717.44)	(717.44)	0.00	0.00	(0.36)	(0.36)
Oct 24	RI	SCO1	0.00039778	0.00039778		0.00		0.00	0.00	0.00	0.00	0.00	(0.01)	(0.01)
Nov 24	RI	CNCO	0.00039778	0.00039778		185,541.39	0.48	88,561.33	(57.79)	88,503.54	73.80	35.31	0.00	35.31
Nov 24	RI	PRO	0.00039778	0.00039778		0.00		0.00	(50,016.09)	(50,016.09)	0.00	0.00	(19.76)	(19.76)
Nov 24	RI	SCO1	0.00039778	0.00039778		0.00		0.00	0.00	0.00	0.00	0.00	(0.16)	(0.16)
Nov 24	RI	CNCO	0.00039778	0.00039778		29,192.20	1.32	38,591.36	(46.00)	38,545.36	11.61	15.36	0.00	15.36
Nov 24	RI	PRO	0.00039778	0.00039778		0.00		0.00	(7,918.20)	(7,918.20)	0.00	0.00	(3.18)	(3.18)
Nov 24	RI	SCO1	0.00039778	0.00039778		0.00		0.00	0.00	0.00	0.00	0.00	(0.12)	(0.12)
Nov 24	RI	CNCO	0.00039778	0.00039778		2,660.00	1.50	3,997.68	(4.73)	3,992.95	1.06	1.60	0.00	1.60
Nov 24	RI	PRO	0.00039778	0.00039778		0.00		0.00	(843.65)	(843.65)	0.00	0.00	(0.44)	(0.44)
Nov 24	RI	SCO1	0.00039778	0.00039778		0.00		0.00	0.00	0.00	0.00	0.00	(0.01)	(0.01)
Dec 24	RI	CNCO	0.00039778	0.00039778		175,562.17	0.49	85,530.49	(71.38)	85,459.11	69.84	33.91	0.00	33.91
Dec 24	RI	PRO	0.00039778	0.00039778		0.00		0.00	(53,572.05)	(53,572.05)	0.00	0.00	(13.93)	(13.93)
Dec 24	RI	SCO1	0.00039778	0.00039778		0.00		0.00	0.00	0.00	0.00	0.00	(0.13)	(0.13)

Represented Unit of Measure: Gas = MCFs, Plant Products = GALs, Oil = BBLs

Generated on Friday, February 28, 2025 1:41 AM

					Property					Owner				
Sales Date	Interest Type	Tax or Deduct Code	Owner Interest	Distribution Interest	BTU	Volume	Price	Value	Taxes and Deductions	Amount after Taxes and Deductions	Volume	Value	Taxes and Deductions	Amount after Taxes and Deductions
Dec 24	RI	CNCO	0.00039778	0.00039778		27,992.41	1.30	36,392.26	(41.69)	36,350.57	11.13	14.47	0.00	14.47
Dec 24	RI	PRO	0.00039778	0.00039778		0.00		0.00	(8,584.10)	(8,584.10)	0.00	0.00	(3.54)	(3.54)
Dec 24	RI	SCO1	0.00039778	0.00039778		0.00		0.00	0.00	0.00	0.00	0.00	(0.11)	(0.11)
Dec 24	RI	CNCO	0.00039778	0.00039778		2,582.00	1.48	3,813.04	(4.39)	3,808.65	1.03	1.45	0.00	1.45
Dec 24	RI	PRO	0.00039778	0.00039778		0.00		0.00	(900.23)	(900.23)	0.00	0.00	(0.46)	(0.46)
Dec 24	RI	SCO1	0.00039778	0.00039778		0.00		0.00	0.00	0.00	0.00	0.00	(0.01)	(0.01)
Total Property												3,466.40	(325.95)	3,140.45

030862-0003 GEORGE 01N - 23N, State: CO, County: WELD

OIL

Nov 24	RI	O06	0.00000000	0.00000000		0.00		0.00	0.00	0.00	0.00	0.00	3.81	3.81
Nov 24	RI	CNCO	0.00039778	0.00039778		19,173.50	68.94	1,321,846.33	(1,880.80)	1,319,965.53	7.63	525.82	(0.76)	525.06
Nov 24	RI	MKT	0.00039778	0.00039778		0.00		0.00	(2,492.73)	(2,492.73)	0.00	0.00	0.00	0.00
Nov 24	RI	SCO1	0.00039778	0.00039778		0.00		0.00	0.00	0.00	0.00	0.00	(4.99)	(4.99)
Nov 24	RI	TRP	0.00039778	0.00039778		0.00		0.00	(67,996.53)	(67,996.53)	0.00	0.00	(27.05)	(27.05)
Dec 24	RI	CNCO	0.00039778	0.00039778		258,523.85	65.85	17,023,179.98	(25,534.77)	16,997,645.21	102.84	6,771.45	(10.17)	6,761.28
Dec 24	RI	MKT	0.00039778	0.00039778		0.00		0.00	(33,608.08)	(33,608.08)	0.00	0.00	0.00	0.00
Dec 24	RI	SCO1	0.00039778	0.00039778		0.00		0.00	0.00	0.00	0.00	0.00	(67.71)	(67.71)
Jan 25	RI	CNCO	0.00039778	0.00039778		231,899.77	73.74	17,101,103.24	(24,374.81)	17,076,728.43	92.25	6,802.46	(9.68)	6,792.78
Jan 25	RI	MKT	0.00039778	0.00039778		0.00		0.00	(30,149.26)	(30,149.26)	0.00	0.00	0.00	0.00
Jan 25	RI	SCO1	0.00039778	0.00039778		0.00		0.00	0.00	0.00	0.00	0.00	(64.64)	(64.64)
Jan 25	RI	TRP	0.00039778	0.00039778		0.00		0.00	(851,230.56)	(851,230.56)	0.00	0.00	(338.62)	(338.62)
Total Property												14,099.73	(519.81)	13,579.92

030862-0004 GEORGE 01N - 23N, State: CO, County: WELD

GAS

Nov 24	RI	CNCO	0.00039778	0.00039778		43,597.00	2.79	121,769.02	(182.67)	121,586.35	17.34	48.44	(0.06)	48.38
Nov 24	RI	SCO1	0.00039778	0.00039778		0.00		0.00	0.00	0.00	0.00	0.00	(0.48)	(0.48)
Nov 24	RI	CNCO	0.00039778	0.00039778		102,930.00	2.27	234,140.44	(351.19)	233,789.25	40.94	93.17	(0.12)	93.05
Nov 24	RI	SCO1	0.00039778	0.00039778		0.00		0.00	0.00	0.00	0.00	0.00	(0.93)	(0.93)
Dec 24	RI	CNCO	0.00039778	0.00039778		222,465.00	3.65	812,784.22	(1,219.13)	811,565.09	88.49	323.35	(0.40)	322.95
Dec 24	RI	SCO1	0.00039778	0.00039778		0.00		0.00	0.00	0.00	0.00	0.00	(3.23)	(3.23)
Dec 24	RI	CNCO	0.00039778	0.00039778		541,183.00	3.31	1,793,458.53	(2,690.20)	1,790,768.33	215.27	713.35	(1.01)	712.34
Dec 24	RI	SCO1	0.00039778	0.00039778		0.00		0.00	0.00	0.00	0.00	0.00	(7.13)	(7.13)

PLANT PRODUCTS

Nov 24	RI	CNCO	0.00039778	0.00039778		30,123.07	0.46	13,730.58	(8.55)	13,722.03	11.98	5.44	0.00	5.44
Nov 24	RI	PRO	0.00039778	0.00039778		0.00		0.00	(7,974.38)	(7,974.38)	0.00	0.00	(3.12)	(3.12)
Nov 24	RI	SCO1	0.00039778	0.00039778		0.00		0.00	0.00	0.00	0.00	0.00	(0.02)	(0.02)
Nov 24	RI	CNCO	0.00039778	0.00039778		3,509.18	1.32	4,639.06	(5.55)	4,633.51	1.40	1.87	0.00	1.87
Nov 24	RI	PRO	0.00039778	0.00039778		0.00		0.00	(935.83)	(935.83)	0.00	0.00	(0.35)	(0.35)
Nov 24	RI	SCO1	0.00039778	0.00039778		0.00		0.00	0.00	0.00	0.00	0.00	(0.02)	(0.02)
Nov 24	RI	CNCO	0.00039778	0.00039778		449.00	1.50	674.77	(0.81)	673.96	0.18	0.26	0.00	0.26
Nov 24	RI	PRO	0.00039778	0.00039778		0.00		0.00	(137.80)	(137.80)	0.00	0.00	(0.06)	(0.06)
Dec 24	RI	CNCO	0.00039778	0.00039778		160,436.13	0.48	76,545.53	(64.13)	76,481.40	63.82	30.44	0.00	30.44
Dec 24	RI	PRO	0.00039778	0.00039778		0.00		0.00	(48,280.69)	(48,280.69)	0.00	0.00	(12.58)	(12.58)

Represented Unit of Measure: Gas = MCFs, Plant Products = GALs, Oil = BBLs

Generated on Friday, February 28, 2025 1:41 AM

Sales Date	Interest Type	Tax or Deduct Code	Owner Interest	Distribution Interest	Property					Owner					
					BTU	Volume	Price	Value	Taxes and Deductions	Amount after Taxes and Deductions	Volume	Value	Taxes and Deductions	Amount after Taxes and Deductions	
Dec 24	RI	SCO1	0.00039778	0.00039778		0.00		0.00	0.00	0.00	0.00	0.00	(0.11)	(0.11)	
Dec 24	RI	CNCO	0.00039778	0.00039778		24,134.91	1.30	31,377.21	(36.12)	31,341.09	9.60	12.46	0.00	12.46	
Dec 24	RI	PRO	0.00039778	0.00039778		0.00		0.00	(7,299.92)	(7,299.92)	0.00	0.00	(2.88)	(2.88)	
Dec 24	RI	SCO1	0.00039778	0.00039778		0.00		0.00	0.00	0.00	0.00	0.00	(0.10)	(0.10)	
Dec 24	RI	CNCO	0.00039778	0.00039778		2,342.00	1.48	3,458.60	(3.98)	3,454.62	0.93	1.41	0.00	1.41	
Dec 24	RI	PRO	0.00039778	0.00039778		0.00		0.00	(804.60)	(804.60)	0.00	0.00	(0.40)	(0.40)	
Dec 24	RI	SCO1	0.00039778	0.00039778		0.00		0.00	0.00	0.00	0.00	0.00	(0.01)	(0.01)	
					Total Property								1,230.19	(33.01)	1,197.18



Production



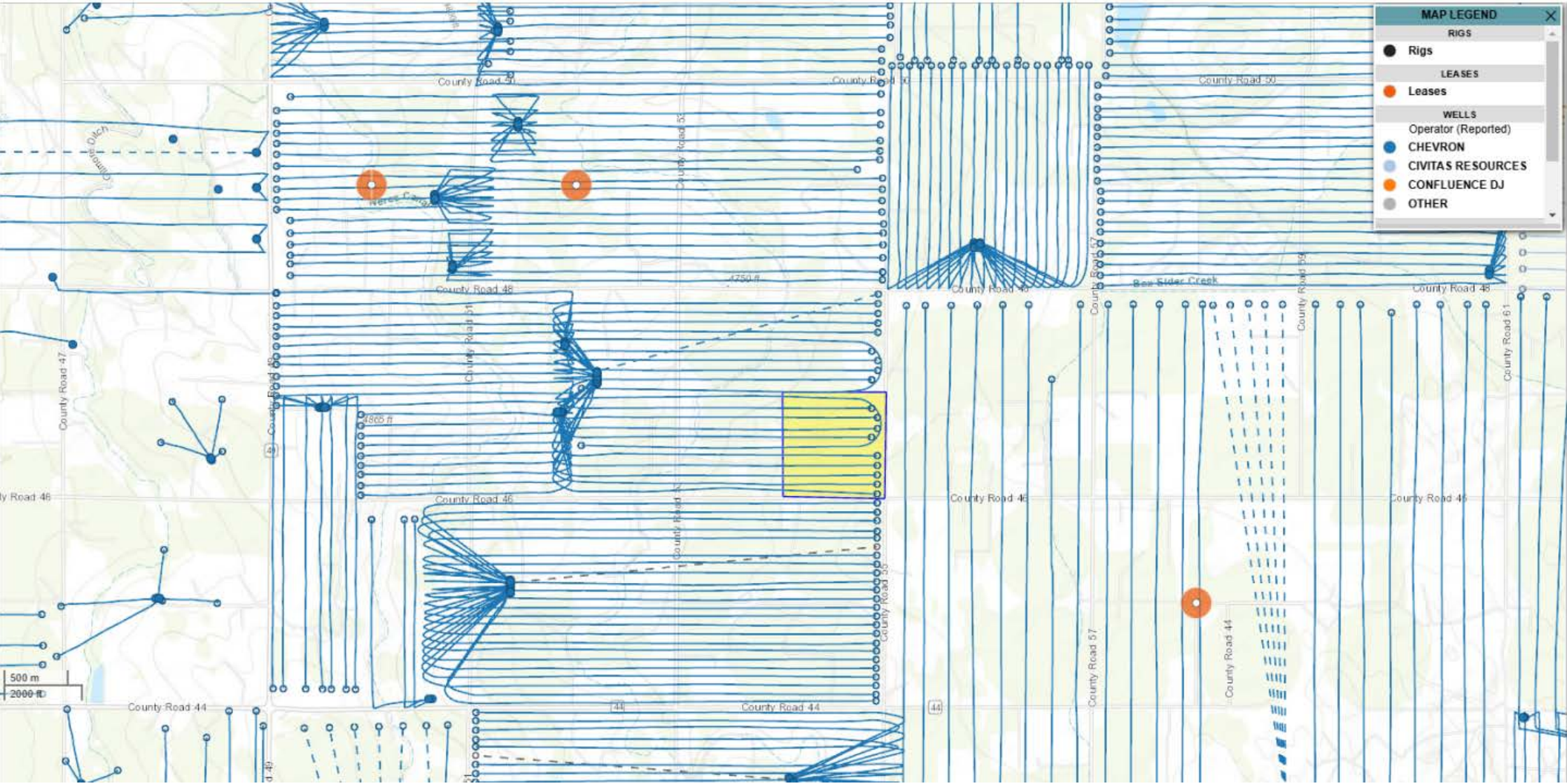
Date	George 07NA API # 05-123-51774 Weld County, CO		George 06N API # 05-123-51776 Weld County, CO		George 05N API # 05-123-51771 Weld County, CO	
	Oil Prod (BBLs)	Gas Prod (MCF)	Oil Prod (BBLs)	Gas Prod (MCF)	Oil Prod (BBLs)	Gas Prod (MCF)
Feb 2025	10,023	51,602	0	0	8,724	43,664
Jan 2025	13,245	60,121	0	0	11,532	50,025
Dec 2024	14,924	64,860	0	0	13,581	55,373
Nov 2024	1,931	21,307	0	0	2,269	21,608
Oct 2024	0	0	0	0	0	0
Sep 2024	0	0	0	0	0	0
Aug 2024	0	0	0	0	0	0
Jul 2024	0	0	0	0	0	0
Jun 2024	0	0	0	0	0	0
May 2024	0	0	0	0	0	0
Apr 2024	0	0	0	0	0	0
Mar 2024	0	0	0	0	0	0
Feb 2024	0	0	0	0	0	0
Jan 2024	0	0	0	0	0	0
Dec 2023	0	0	0	0	0	0
Nov 2023	0	0	0	0	0	0
Oct 2023	0	0	0	0	0	0
Sep 2023	0	0	0	0	0	0
Aug 2023	0	0	0	0	0	0
Jul 2023	0	0	0	0	0	0
Jun 2023	0	0	0	0	0	0
May 2023	0	0	0	0	0	0
Apr 2023	0	0	0	0	0	0
Mar 2023	0	0	0	0	0	0
Feb 2023	0	0	0	0	0	0
Jan 2023	0	0	0	0	0	0
Dec 2022	0	0	0	0	0	0

Date	Hen 13N API # 05-123-51803 Weld County, CO		Hen 08N API # 05-123-51790 Weld County, CO	
	Oil Prod (BBLs)	Gas Prod (MCF)	Oil Prod (BBLs)	Gas Prod (MCF)
Feb 2025	3,153	20,575	3,521	22,559
Jan 2025	4,118	24,705	4,337	27,061
Dec 2024	4,633	27,099	4,879	29,562
Nov 2024	5,055	26,096	5,310	28,117
Oct 2024	6,240	32,462	6,543	35,394
Sep 2024	7,428	35,179	7,742	38,509
Aug 2024	10,130	41,446	10,653	45,908
Jul 2024	6,933	23,079	8,444	27,219
Jun 2024	0	0	0	0
May 2024	0	0	0	0
Apr 2024	0	0	0	0
Mar 2024	0	0	0	0
Feb 2024	0	0	0	0
Jan 2024	0	0	0	0
Dec 2023	0	0	0	0
Nov 2023	0	0	0	0
Oct 2023	0	0	0	0
Sep 2023	0	0	0	0
Aug 2023	0	0	0	0
Jul 2023	0	0	0	0
Jun 2023	0	0	0	0
May 2023	0	0	0	0
Apr 2023	0	0	0	0
Mar 2023	0	0	0	0
Feb 2023	0	0	0	0
Jan 2023	0	0	0	0
Dec 2022	0	0	0	0



Maps





MAP LEGEND

RIGS

- Rigs

LEASES

- Leases

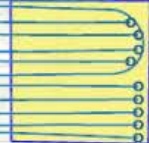
WELLS

Operator (Reported)

- CHEVRON
- CIVITAS RESOURCES
- CONFLUENCE DJ
- OTHER

500 m
2000 ft

Wetzel Canyon





Conveyance Document

Please note the following draft deed/assignment has been prepared by the seller in advance of sale. The successful buyer agrees to accept title to the lots pursuant to said deeds or assignments. Seller shall not be obligated or required to modify or change said deeds or assignments unless a correction is required to properly convey the interests being sold.

MINERAL AND ROYALTY DEED

KNOW ALL MEN BY THESE PRESENTS, That [REDACTED] whose address is [REDACTED], hereinafter called "Grantor" (whether one or more), for and in consideration of the sum of Ten Dollars (\$10.00) cash in hand paid and other good and valuable considerations, which is acknowledged, does hereby grant, bargain, sell, convey, and deliver unto

hereinafter called "Grantee", **10% of 100% as of May 1, 2025** of Grantor's right, title and interests in and to the oil, gas, and other minerals, including all royalty in and under and that may be produced from the following described lands in Weld County, Colorado, to-wit:

Township 4 North, Range 64 West of the 6th P.M.
Section 09: Southeast Quarter (SE/4)

Together with the right of ingress and egress at all times for the purposes of mining, drilling, exploring, operating, and developing said lands for oil, gas and other minerals, and storing, handling, transporting and marketing the same therefrom.

The interest herein is being conveyed by Grantor and shall be accepted by Grantee in "as is, where is" condition without any warranties of any kind or nature whether express or implied (including but not limited to warranty of title).

WITNESS my hand and executed this the ____day of _____, 2025, but this conveyance shall be effective for all purposes, including the production of oil and gas, as of the **1st day of June, 2025** (the "Effective Date").

By: [REDACTED]

ACKNOWLEDGEMENT

STATE OF NEW MEXICO)
COUNTY OF SANTA FE)

The foregoing instrument was acknowledged before me this ____day of _____, 2025, by Dakota Postal, to me known to be the identical person(s) who executed the within and foregoing instrument and acknowledged to me that he/she/they executed the same as his/her/their free and voluntary act and deed for the uses and purposes therein set forth.

Notary Public (Signed): _____

SEAL

Seal Notary Public (Printed): _____

My Commission Expires: _____