

MID-CONTINENT ENERGY EXCHANGE

Oil & Gas Asset Auctions



Data Packet

Bauer & El Rancho

11-Well MIRI & NPRI Package in
Martin County, TX

In this Document:

[Lot Summary](#)

[Income and Expenses](#)

[Production](#)

[Outgoing Conveyance](#)



Summary

Lot Summary

Lease Name: Bauer & El Rancho - 11 Well MIRI & NPRI

County/State: Martin, TX

Asset Type: Mineral/Royalty Interest & NPRI

Legal Description: W/2 Sec 4, Blk 36, T-3-N, T&P RR. Co. Survey

API: See below

Decimal Interest: See below

Net Monthly Income: \$151.01

Operator: Ovintiv USA, Inc.

Well Name	Well #	API10	Well Status	RI - Decimal	NPRI - Decimal	Conveyed 1/10th - RI	Conveyed 1/10th - NPRI
BAUER	1	42-317-36102	ACTIVE	0.00033597	-	0.00003360	-
BAUER	2	42-317-37249	INACTIVE	0.00033597	-	0.00003360	-
BAUER	3	42-317-37575	ACTIVE	0.00033597	-	0.00003360	-
BAUER	4	42-317-38218	ACTIVE	0.00033597	-	0.00003360	-
BAUER	5	42-317-38806	ACTIVE	0.00033597	-	0.00003360	-
EL RANCHO W 86A	1HD	42-317-46073	ACTIVE	-	0.00016546	-	0.00001655
EL RANCHO W 86A	2HJ	42-317-46074	ACTIVE	-	0.00016562	-	0.00001656
EL RANCHO W 86B	3HF	42-317-46075	ACTIVE	-	0.00016555	-	0.00001656
EL RANCHO W 86C	4HJ	42-317-46076	ACTIVE	-	0.00016563	-	0.00001656
EL RANCHO W 86D	5HG	42-317-46077	ACTIVE	-	0.00016559	-	0.00001656
EL RANCHO W 86D	6HJ	42-317-46079	ACTIVE	-	0.00016554	-	0.00001655

Disclaimer: Bidders must conduct their own due diligence prior to bidding at the auction. Bidders shall rely upon their own evaluations of the properties and not upon any representation either oral or written provided here. This is a summary of information provided by the seller to Mid-Continent Energy Exchange.



Income and Expenses

Summary

6 months income info

Net Income: \$906.03

Per Month: \$151.01

Monthly Revenue		
Accounting Month	Owner Net	Conveyed 1/10th
Sep-25	\$1,164.28	\$116.43
Aug-25	\$1,289.50	\$128.95
Jul-25	\$1,531.66	\$153.17
Jun-25	\$1,740.66	\$174.07
May-25	\$1,984.33	\$198.43
Apr-25	\$1,349.87	\$134.99
Monthly Average	\$1,510.05	\$151.01



Revenue Statement

Owner

Operator

Check

OVINTIV USA INC
370 17TH ST STE 1700
DENVER, CO 80202-5632
1-866-917-3700
ovintiv@ownerrelationsupport.com

Check Number3095767
Check Amount
Check DateSeptember 20, 2025
Check TypeACH

Copyright Notice
© 2025 Enverus. All rights reserved. Unauthorized use prohibited.
Data, reports, user interface, software and other content which is accessed by users through EnergyLink constitutes copyright protected content owned by Enverus. Any unauthorized copying, scraping, downloading, retransmission, redistribution, reproduction, republishing or other duplication or modification of copyright protected content is a violation of Canadian and US federal copyright laws and may be subject to legal action. Other than downloading of PDF copies of processed invoices for use in an unmodified format by authorized users, no one has permission to copy, scrape, download, retransmit, redistribute, reproduce, republish, duplicate, modify or make public for commercial use this copyright protected content, in any form, without the express written permission of Enverus.



EnergyLink can provide this data in Excel, CDEX, or any other requested format.
Visit <https://app.energylink.com/Features> to find out more information or call EnergyLink Support at 1-888-573-3364.



Type		Production Date	Property Values				Owner Share			
			BTU	Volume	Price	Value	Owner Interest	Distribution Interest	Volume	Value
Property: 92592		EL RANCHO W 86C 4HJ, State: TX, County: MARTIN								
GAS (MCF)										
	NON-PARTICIPATING ROYALTY INTEREST	Jul 25	1.4380	10,602.44	1.42	15,022.39	0.00165630	0.00165630	17.56	24.88
	COMPRESSION	Jul 25				(4,496.32)	0.00165630	0.00165630		(7.45)
	TREATING	Jul 25				(2,962.67)	0.00165630	0.00165630		(4.91)
	GATHERING	Jul 25				(1,579.35)	0.00165630	0.00165630		(2.62)
	HIGH PRESSURE GATHERING	Jul 25				(2,783.44)	0.00165630	0.00165630		(4.61)
	PROCESSING FUEL	Jul 25				(813.96)	0.00165630	0.00165630		(1.35)
	ENVIRONMENTAL TAX (GAS)	Jul 25				(9.59)	0.00165630	0.00165630		(0.02)
	PRODUCTION TAX	Jul 25				(68.90)	0.00165630	0.00165630		(0.11)
OIL (BBLs)										
	NON-PARTICIPATING ROYALTY INTEREST	Jul 25		14,354.39	68.74	986,715.90	0.00165630	0.00165630	23.78	1,634.30

Represented Unit of Measure: Gas = MCFs, Plant Products = BBLs, Oil = BBLs

Generated on Friday, October 3, 2025 12:19 PM

© 2025 Enverus. All rights reserved. Unauthorized use prohibited.

Type	Production Date	Property Values				Owner Share			
		BTU	Volume	Price	Value	Owner Interest	Distribution Interest	Volume	Value
COND/OIL TRANSPORTATION	Jul 25				(16,000.01)	0.00165630	0.00165630		(26.50)
OIL TRANSPORT FUEL	Jul 25				(1,973.43)	0.00165630	0.00165630		(3.27)
ENVIRONMENTAL TAX (GAS)	Jul 25				(89.71)	0.00165630	0.00165630		(0.15)
PRODUCTION TAX	Jul 25				(45,388.93)	0.00165630	0.00165630		(75.18)

PLANT PRODUCTS (BBLs)									
NON-PARTICIPATING ROYALTY INTEREST	Jul 25		2,611.89	25.33	66,155.73	0.00165630	0.00165630	4.33	109.57
PROCESSING	Jul 25				(9,160.95)	0.00165630	0.00165630		(15.17)
PRODUCTION TAX	Jul 25				(4,020.96)	0.00165630	0.00165630		(6.66)



Revenue Statement

Owner

Operator

OVINTIV USA INC
370 17TH ST STE 1700
DENVER, CO 80202-5632
1-866-917-3700
ovintiv@ownerrelationsupport.com

Check

Check Number 3095767
Check Amount
Check Date September 20, 2025
Check Type ACH

Copyright Notice

© 2025 Enverus. All rights reserved. Unauthorized use prohibited.

Data, reports, user interface, software and other content which is accessed by users through EnergyLink constitutes copyright protected content owned by Enverus. Any unauthorized copying, scraping, downloading, retransmission, redistribution, reproduction, republishing or other duplication or modification of copyright protected content is a violation of Canadian and US federal copyright laws and may be subject to legal action. Other than downloading of PDF copies of processed invoices for use in an unmodified format by authorized users, no one has permission to copy, scrape, download, retransmit, redistribute, reproduce, republish, duplicate, modify or make public for commercial use this copyright protected content, in any form, without the express written permission of Enverus.



EnergyLink can provide this data in Excel, CDEX, or any other requested format.
Visit <https://app.energylink.com/Features> to find out more information or call EnergyLink Support at 1-888-573-3364.



		Production Date	Property Values				Owner Share			
			BTU	Volume	Price	Value	Owner Interest	Distribution Interest	Volume	Value
Property: 92595		EL RANCHO W 86A 2HJ, State: TX, County: MARTIN								
GAS (MCF)										
	NON-PARTICIPATING ROYALTY INTEREST	Jul 25	1.4380	18,177.65	1.42	25,755.51	0.00165627	0.00165627	30.11	42.66
	COMPRESSION	Jul 25				(7,708.83)	0.00165627	0.00165627		(12.77)
	TREATING	Jul 25				(5,079.43)	0.00165627	0.00165627		(8.41)
	GATHERING	Jul 25				(2,707.75)	0.00165627	0.00165627		(4.48)
	HIGH PRESSURE GATHERING	Jul 25				(4,772.13)	0.00165627	0.00165627		(7.90)
	PROCESSING FUEL	Jul 25				(1,395.51)	0.00165627	0.00165627		(2.31)
	ENVIRONMENTAL TAX (GAS)	Jul 25				(16.45)	0.00165627	0.00165627		(0.03)
	PRODUCTION TAX	Jul 25				(118.13)	0.00165627	0.00165627		(0.20)
OIL (BBLs)										
	NON-PARTICIPATING ROYALTY INTEREST	Jul 25		29,982.12	68.74	2,060,960.76	0.00165627	0.00165627	49.66	3,413.51

Represented Unit of Measure: Gas = MCFs, Plant Products = BBLs, Oil = BBLs

Generated on Friday, October 3, 2025 12:19 PM

© 2025 Enverus. All rights reserved. Unauthorized use prohibited.

Type	Production Date	Property Values				Owner Share			
		BTU	Volume	Price	Value	Owner Interest	Distribution Interest	Volume	Value
COND/OIL TRANSPORTATION	Jul 25				(33,419.34)	0.00165627	0.00165627		(55.35)
OIL TRANSPORT FUEL	Jul 25				(4,121.92)	0.00165627	0.00165627		(6.83)
ENVIRONMENTAL TAX (GAS)	Jul 25				(187.39)	0.00165627	0.00165627		(0.31)
PRODUCTION TAX	Jul 25				(94,804.19)	0.00165627	0.00165627		(157.02)
PLANT PRODUCTS (BBLs)									
NON-PARTICIPATING ROYALTY INTEREST	Jul 25		4,478.03	25.33	113,422.37	0.00165627	0.00165627	7.42	187.86
PROCESSING	Jul 25				(15,706.22)	0.00165627	0.00165627		(26.01)
PRODUCTION TAX	Jul 25				(6,893.84)	0.00165627	0.00165627		(11.42)



Revenue Statement

Owner

Operator

Check

OVINTIV USA INC
370 17TH ST STE 1700
DENVER, CO 80202-5632
1-866-917-3700
ovintiv@ownerrelationsupport.com

Check Number 3095767
Check Amount
Check Date September 20, 2025
Check Type ACH

Copyright Notice
© 2025 Enverus. All rights reserved. Unauthorized use prohibited.
Data, reports, user interface, software and other content which is accessed by users through EnergyLink constitutes copyright protected content owned by Enverus. Any unauthorized copying, scraping, downloading, retransmission, redistribution, reproduction, republishing or other duplication or modification of copyright protected content is a violation of Canadian and US federal copyright laws and may be subject to legal action. Other than downloading of PDF copies of processed invoices for use in an unmodified format by authorized users, no one has permission to copy, scrape, download, retransmit, redistribute, reproduce, republish, duplicate, modify or make public for commercial use this copyright protected content, in any form, without the express written permission of Enverus.



EnergyLink can provide this data in Excel, CDEX, or any other requested format.
Visit <https://app.energylink.com/Features> to find out more information or call EnergyLink Support at 1-888-573-3364.



		Production Date	Property Values				Owner Share			
			BTU	Volume	Price	Value	Owner Interest	Distribution Interest	Volume	Value
Property: 92599		EL RANCHO W 86B 3HF, State: TX, County: MARTIN								
GAS (MCF)										
	NON-PARTICIPATING ROYALTY INTEREST	Jul 25	1.4380	9,284.37	1.42	13,154.83	0.00165552	0.00165552	15.37	21.78
	COMPRESSION	Jul 25				(3,937.35)	0.00165552	0.00165552		(6.52)
	TREATING	Jul 25				(2,594.36)	0.00165552	0.00165552		(4.30)
	GATHERING	Jul 25				(1,383.01)	0.00165552	0.00165552		(2.29)
	HIGH PRESSURE GATHERING	Jul 25				(2,437.41)	0.00165552	0.00165552		(4.04)
	PROCESSING FUEL	Jul 25				(712.77)	0.00165552	0.00165552		(1.18)
	ENVIRONMENTAL TAX (GAS)	Jul 25				(8.40)	0.00165552	0.00165552		(0.01)
	PRODUCTION TAX	Jul 25				(60.33)	0.00165552	0.00165552		(0.10)
OIL (BBLs)										
	NON-PARTICIPATING ROYALTY INTEREST	Jul 25		8,787.47	68.74	604,047.71	0.00165552	0.00165552	14.55	1,000.01

Represented Unit of Measure: Gas = MCFs, Plant Products = BBLs, Oil = BBLs

Generated on Friday, October 3, 2025 12:19 PM

© 2025 Enverus. All rights reserved. Unauthorized use prohibited.

Type	Production Date	Property Values				Owner Share			
		BTU	Volume	Price	Value	Owner Interest	Distribution Interest	Volume	Value
COND/OIL TRANSPORTATION	Jul 25				(9,794.89)	0.00165552	0.00165552		(16.22)
OIL TRANSPORT FUEL	Jul 25				(1,208.10)	0.00165552	0.00165552		(2.00)
ENVIRONMENTAL TAX (GAS)	Jul 25				(54.92)	0.00165552	0.00165552		(0.09)
PRODUCTION TAX	Jul 25				(27,786.19)	0.00165552	0.00165552		(46.00)
PLANT PRODUCTS (BBLs)	NON-PARTICIPATING ROYALTY INTEREST	Jul 25	2,287.19	25.33	57,931.38	0.00165552	0.00165552	3.79	95.91
	PROCESSING	Jul 25			(8,022.08)	0.00165552	0.00165552		(13.28)
	PRODUCTION TAX	Jul 25			(3,521.08)	0.00165552	0.00165552		(5.83)



Revenue Statement

Owner

Operator

Check

OVINTIV USA INC
370 17TH ST STE 1700
DENVER, CO 80202-5632
1-866-917-3700
ovintiv@ownerrelationsupport.com

Check Number 3095767
Check Amount
Check Date September 20, 2025
Check Type ACH

Copyright Notice
© 2025 Enverus. All rights reserved. Unauthorized use prohibited.
Data, reports, user interface, software and other content which is accessed by users through EnergyLink constitutes copyright protected content owned by Enverus. Any unauthorized copying, scraping, downloading, retransmission, redistribution, reproduction, republishing or other duplication or modification of copyright protected content is a violation of Canadian and US federal copyright laws and may be subject to legal action. Other than downloading of PDF copies of processed invoices for use in an unmodified format by authorized users, no one has permission to copy, scrape, download, retransmit, redistribute, reproduce, republish, duplicate, modify or make public for commercial use this copyright protected content, in any form, without the express written permission of Enverus.



EnergyLink can provide this data in Excel, CDEX, or any other requested format.
Visit <https://app.energylink.com/Features> to find out more information or call EnergyLink Support at 1-888-573-3364.



		Production Date	Property Values				Owner Share			
			BTU	Volume	Price	Value	Owner Interest	Distribution Interest	Volume	Value
Property: 92600		EL RANCHO W 86D 6HJ, State: TX, County: MARTIN								
GAS (MCF)										
	NON-PARTICIPATING ROYALTY INTEREST	Jul 25	1.4380	13,548.57	1.42	19,196.68	0.00165546	0.00165546	22.42	31.78
	COMPRESSION	Jul 25				(5,745.72)	0.00165546	0.00165546		(9.51)
	TREATING	Jul 25				(3,785.92)	0.00165546	0.00165546		(6.27)
	GATHERING	Jul 25				(2,018.20)	0.00165546	0.00165546		(3.34)
	HIGH PRESSURE GATHERING	Jul 25				(3,556.87)	0.00165546	0.00165546		(5.89)
	PROCESSING FUEL	Jul 25				(1,040.14)	0.00165546	0.00165546		(1.72)
	ENVIRONMENTAL TAX (GAS)	Jul 25				(12.26)	0.00165546	0.00165546		(0.02)
	PRODUCTION TAX	Jul 25				(88.05)	0.00165546	0.00165546		(0.15)
OIL (BBLs)										
	NON-PARTICIPATING ROYALTY INTEREST	Jul 25		19,320.65	68.74	1,328,094.93	0.00165546	0.00165546	31.98	2,198.61

Represented Unit of Measure: Gas = MCFs, Plant Products = BBLs, Oil = BBLs

Generated on Friday, October 3, 2025 12:19 PM

© 2025 Enverus. All rights reserved. Unauthorized use prohibited.

Type	Production Date	Property Values				Owner Share			
		BTU	Volume	Price	Value	Owner Interest	Distribution Interest	Volume	Value
COND/OIL TRANSPORTATION	Jul 25				(21,535.62)	0.00165546	0.00165546		(35.65)
OIL TRANSPORT FUEL	Jul 25				(2,656.19)	0.00165546	0.00165546		(4.40)
ENVIRONMENTAL TAX (GAS)	Jul 25				(120.75)	0.00165546	0.00165546		(0.20)
PRODUCTION TAX	Jul 25				(61,092.37)	0.00165546	0.00165546		(101.14)
PLANT PRODUCTS (BBLs)									
NON-PARTICIPATING ROYALTY INTEREST	Jul 25		3,337.67	25.33	84,538.53	0.00165546	0.00165546	5.53	139.95
PROCESSING	Jul 25				(11,706.51)	0.00165546	0.00165546		(19.38)
PRODUCTION TAX	Jul 25				(5,138.27)	0.00165546	0.00165546		(8.51)



Revenue Statement

Owner

Operator

Check

OVINTIV USA INC
370 17TH ST STE 1700
DENVER, CO 80202-5632
1-866-917-3700
ovintiv@ownerrelationsupport.com

Check Number 3095767
Check Amount
Check Date September 20, 2025
Check Type ACH

Copyright Notice
© 2025 Enverus. All rights reserved. Unauthorized use prohibited.
Data, reports, user interface, software and other content which is accessed by users through EnergyLink constitutes copyright protected content owned by Enverus. Any unauthorized copying, scraping, downloading, retransmission, redistribution, reproduction, republishing or other duplication or modification of copyright protected content is a violation of Canadian and US federal copyright laws and may be subject to legal action. Other than downloading of PDF copies of processed invoices for use in an unmodified format by authorized users, no one has permission to copy, scrape, download, retransmit, redistribute, reproduce, republish, duplicate, modify or make public for commercial use this copyright protected content, in any form, without the express written permission of Enverus.



EnergyLink can provide this data in Excel, CDEX, or any other requested format.
Visit <https://app.energylink.com/Features> to find out more information or call EnergyLink Support at 1-888-573-3364.



		Production Date	Property Values				Owner Share			
			BTU	Volume	Price	Value	Owner Interest	Distribution Interest	Volume	Value
Property:	92602	EL RANCHO W 86D 5HG, State: TX, County: MARTIN								
GAS (MCF)										
	NON-PARTICIPATING ROYALTY INTEREST	Jul 25	1.4380	25,966.07	1.42	36,790.79	0.00165597	0.00165597	43.00	60.93
	COMPRESSION	Jul 25				(11,011.78)	0.00165597	0.00165597		(18.24)
	TREATING	Jul 25				(7,255.78)	0.00165597	0.00165597		(12.02)
	GATHERING	Jul 25				(3,867.92)	0.00165597	0.00165597		(6.41)
	HIGH PRESSURE GATHERING	Jul 25				(6,816.81)	0.00165597	0.00165597		(11.29)
	PROCESSING FUEL	Jul 25				(1,993.44)	0.00165597	0.00165597		(3.30)
	ENVIRONMENTAL TAX (GAS)	Jul 25				(23.49)	0.00165597	0.00165597		(0.04)
	PRODUCTION TAX	Jul 25				(168.74)	0.00165597	0.00165597		(0.28)
OIL (BBLs)										
	NON-PARTICIPATING ROYALTY INTEREST	Jul 25		23,051.70	68.74	1,584,566.04	0.00165597	0.00165597	38.17	2,623.99

Represented Unit of Measure: Gas = MCFs, Plant Products = BBLs, Oil = BBLs

Generated on Friday, October 3, 2025 12:19 PM

© 2025 Enverus. All rights reserved. Unauthorized use prohibited.

Type	Production Date	Property Values				Owner Share			
		BTU	Volume	Price	Value	Owner Interest	Distribution Interest	Volume	Value
COND/OIL TRANSPORTATION	Jul 25				(25,694.40)	0.00165597	0.00165597		(42.55)
OIL TRANSPORT FUEL	Jul 25				(3,169.13)	0.00165597	0.00165597		(5.25)
ENVIRONMENTAL TAX (GAS)	Jul 25				(144.07)	0.00165597	0.00165597		(0.24)
PRODUCTION TAX	Jul 25				(72,890.04)	0.00165597	0.00165597		(120.70)
PLANT PRODUCTS (BBLs)									
NON-PARTICIPATING ROYALTY INTEREST	Jul 25		6,396.70	25.33	162,019.63	0.00165597	0.00165597	10.59	268.30
PROCESSING	Jul 25				(22,435.74)	0.00165597	0.00165597		(37.15)
PRODUCTION TAX	Jul 25				(9,847.59)	0.00165597	0.00165597		(16.31)



Revenue Statement

Owner

Operator

Check

OVINTIV USA INC
370 17TH ST STE 1700
DENVER, CO 80202-5632
1-866-917-3700
ovintiv@ownerrelationsupport.com

Check Number 3082085
Check Amount
Check Date August 20, 2025
Check Type ACH

Copyright Notice

© 2025 Enverus. All rights reserved. Unauthorized use prohibited.

Data, reports, user interface, software and other content which is accessed by users through EnergyLink constitutes copyright protected content owned by Enverus. Any unauthorized copying, scraping, downloading, retransmission, redistribution, reproduction, republishing or other duplication or modification of copyright protected content is a violation of Canadian and US federal copyright laws and may be subject to legal action. Other than downloading of PDF copies of processed invoices for use in an unmodified format by authorized users, no one has permission to copy, scrape, download, retransmit, redistribute, reproduce, republish, duplicate, modify or make public for commercial use this copyright protected content, in any form, without the express written permission of Enverus.



EnergyLink can provide this data in Excel, CDEX, or any other requested format.
Visit <https://app.energylink.com/Features> to find out more information or call EnergyLink Support at 1-888-573-3364.



		Production Date	Property Values				Owner Share			
			BTU	Volume	Price	Value	Owner Interest	Distribution Interest	Volume	Value
Property:	92592	EL RANCHO W 86C 4HJ, State: TX, County: MARTIN								
GAS (MCF)										
	NON-PARTICIPATING ROYALTY INTEREST	Jun 25	1.4660	11,985.16	1.49	17,851.70	0.00165630	0.00165630	19.85	29.56
	COMPRESSION	Jun 25				(5,310.55)	0.00165630	0.00165630		(8.80)
	TREATING	Jun 25				(4,291.96)	0.00165630	0.00165630		(7.11)
	GATHERING	Jun 25				(1,955.33)	0.00165630	0.00165630		(3.24)
	HIGH PRESSURE GATHERING	Jun 25				(3,287.48)	0.00165630	0.00165630		(5.45)
	PROCESSING FUEL	Jun 25				(1,007.95)	0.00165630	0.00165630		(1.67)
	ENVIRONMENTAL TAX (GAS)	Jun 25				(11.15)	0.00165630	0.00165630		(0.02)
	PRODUCTION TAX	Jun 25				(26.42)	0.00165630	0.00165630		(0.04)

OIL (BBLs)

NON-PARTICIPATING ROYALTY INTEREST	Jun 25	17,894.06	68.85	1,231,937.85	0.00165630	0.00165630	29.64	2,040.46
------------------------------------	--------	-----------	-------	--------------	------------	------------	-------	----------

Represented Unit of Measure: Gas = MCFs, Plant Products = BBLs, Oil = BBLs

Generated on Friday, October 3, 2025 12:18 PM

© 2025 Enverus. All rights reserved. Unauthorized use prohibited.

		Property Values				Owner Share			
Type	Production Date	BTU	Volume	Price	Value	Owner Interest	Distribution Interest	Volume	Value
COND/OIL TRANSPORTATION	Jun 25				(19,576.06)	0.00165630	0.00165630		(32.42)
OIL TRANSPORT FUEL	Jun 25				(2,463.88)	0.00165630	0.00165630		(4.08)
ENVIRONMENTAL TAX (GAS)	Jun 25				(111.84)	0.00165630	0.00165630		(0.19)
PRODUCTION TAX	Jun 25				(56,669.14)	0.00165630	0.00165630		(93.86)
PLANT PRODUCTS (BBLs)									
NON-PARTICIPATING ROYALTY INTEREST	Jun 25		3,227.04	25.87	83,470.64	0.00165630	0.00165630	5.35	138.25
PROCESSING	Jun 25				(10,819.88)	0.00165630	0.00165630		(17.92)
PRODUCTION TAX	Jun 25				(5,143.33)	0.00165630	0.00165630		(8.52)



Revenue Statement

Owner

Operator

Check

OVINTIV USA INC
370 17TH ST STE 1700
DENVER, CO 80202-5632
1-866-917-3700
ovintiv@ownerrelationsupport.com

Check Number 3082085
Check Amount
Check Date August 20, 2025
Check Type ACH

Copyright Notice

© 2025 Enverus. All rights reserved. Unauthorized use prohibited.

Data, reports, user interface, software and other content which is accessed by users through EnergyLink constitutes copyright protected content owned by Enverus. Any unauthorized copying, scraping, downloading, retransmission, redistribution, reproduction, republishing or other duplication or modification of copyright protected content is a violation of Canadian and US federal copyright laws and may be subject to legal action. Other than downloading of PDF copies of processed invoices for use in an unmodified format by authorized users, no one has permission to copy, scrape, download, retransmit, redistribute, reproduce, republish, duplicate, modify or make public for commercial use this copyright protected content, in any form, without the express written permission of Enverus.



EnergyLink can provide this data in Excel, CDEX, or any other requested format.
Visit <https://app.energylink.com/Features> to find out more information or call EnergyLink Support at 1-888-573-3364.



		Type	Production Date	Property Values				Owner Share			
				BTU	Volume	Price	Value	Owner Interest	Distribution Interest	Volume	Value
Property:	92593	EL RANCHO W 86A 1HD, State: TX, County: MARTIN									
GAS (MCF)		NON-PARTICIPATING ROYALTY INTEREST	Jan 25	1.2930	157.71	1.83	288.82	0.00165465	0.00165465	0.26	0.47
		COMPRESSION	Jan 25				(46.44)	0.00165465	0.00165465		(0.08)
		TREATING	Jan 25				(27.62)	0.00165465	0.00165465		(0.05)
		GATHERING	Jan 25				(25.75)	0.00165465	0.00165465		(0.04)
		HIGH PRESSURE GATHERING	Jan 25				(35.89)	0.00165465	0.00165465		(0.06)
		PROCESSING FUEL	Jan 25				(13.36)	0.00165465	0.00165465		(0.02)
		ENVIRONMENTAL TAX (GAS)	Jan 25				(0.11)	0.00165465	0.00165465		0.00
		PRODUCTION TAX	Jan 25				(8.71)	0.00165465	0.00165465		(0.01)
		NON-PARTICIPATING ROYALTY INTEREST	Feb 25	1.4900	1,955.89	1.44	2,806.79	0.00165465	0.00165465	3.24	4.64
		COMPRESSION	Feb 25				(663.78)	0.00165465	0.00165465		(1.10)
		TREATING	Feb 25				(503.64)	0.00165465	0.00165465		(0.83)

Represented Unit of Measure: Gas = MCFs, Plant Products = BBLs, Oil = BBLs

Generated on Friday, October 3, 2025 12:18 PM

© 2025 Enverus. All rights reserved. Unauthorized use prohibited.

Type	Production Date	Property Values				Owner Share			
		BTU	Volume	Price	Value	Owner Interest	Distribution Interest	Volume	Value
GATHERING	Feb 25				(343.37)	0.00165465	0.00165465		(0.57)
HIGH PRESSURE GATHERING	Feb 25				(512.92)	0.00165465	0.00165465		(0.85)
PROCESSING FUEL	Feb 25				(176.94)	0.00165465	0.00165465		(0.29)
ENVIRONMENTAL TAX (GAS)	Feb 25				(1.30)	0.00165465	0.00165465		0.00
PRODUCTION TAX	Feb 25				(25.01)	0.00165465	0.00165465		(0.04)
NON-PARTICIPATING ROYALTY INTEREST	Mar 25	1.4900	7,318.12	-0.04	(300.04)	0.00165465	0.00165465	12.11	(0.49)
COMPRESSION	Mar 25				(2,483.58)	0.00165465	0.00165465		(4.11)
TREATING	Mar 25				(1,884.41)	0.00165465	0.00165465		(3.12)
GATHERING	Mar 25				36.71	0.00165465	0.00165465		0.06
HIGH PRESSURE GATHERING	Mar 25				(1,919.13)	0.00165465	0.00165465		(3.18)
PROCESSING FUEL	Mar 25				18.92	0.00165465	0.00165465		0.03
ENVIRONMENTAL TAX (GAS)	Mar 25				(4.88)	0.00165465	0.00165465		(0.01)
PRODUCTION TAX	Mar 25				487.18	0.00165465	0.00165465		0.81
NON-PARTICIPATING ROYALTY INTEREST	Apr 25	1.0000	0.00		0.00	0.00165465	0.00165465	13.58	7.84
COMPRESSION	Apr 25				0.00	0.00165465	0.00165465		(4.64)
TREATING	Apr 25				0.00	0.00165465	0.00165465		(1.68)
GATHERING	Apr 25				0.00	0.00165465	0.00165465		(0.96)
HIGH PRESSURE GATHERING	Apr 25				0.00	0.00165465	0.00165465		(2.87)
PROCESSING FUEL	Apr 25				0.00	0.00165465	0.00165465		(0.50)
ENVIRONMENTAL TAX (GAS)	Apr 25				0.00	0.00165465	0.00165465		(0.01)
PRODUCTION TAX	Apr 25				0.00	0.00165465	0.00165465		0.27

Type	Production Date	Property Values				Owner Share			
		BTU	Volume	Price	Value	Owner Interest	Distribution Interest	Volume	Value
NON-PARTICIPATING ROYALTY INTEREST	May 25	1.0000	4,580.09	0.37	1,676.55	0.00165465	0.00165465	7.58	2.77
COMPRESSION	May 25				(1,568.16)	0.00165465	0.00165465		(2.59)
TREATING	May 25				(801.98)	0.00165465	0.00165465		(1.33)
GATHERING	May 25				(202.20)	0.00165465	0.00165465		(0.33)
HIGH PRESSURE GATHERING	May 25				(970.77)	0.00165465	0.00165465		(1.61)
PROCESSING FUEL	May 25				(104.21)	0.00165465	0.00165465		(0.17)
ENVIRONMENTAL TAX (GAS)	May 25				(3.05)	0.00165465	0.00165465		(0.01)
PRODUCTION TAX	May 25				161.92	0.00165465	0.00165465		0.27

PLANT PRODUCTS (BBLs)						Total GAS (MCF)		40.86	(15.97)
NON-PARTICIPATING ROYALTY INTEREST	Jan 25		22.43	25.05	561.81	0.00165465	0.00165465	0.04	0.93
PROCESSING	Jan 25				(96.17)	0.00165465	0.00165465		(0.16)
PRODUCTION TAX	Jan 25				(32.80)	0.00165465	0.00165465		(0.05)
NON-PARTICIPATING ROYALTY INTEREST	Feb 25		431.88	30.13	13,013.19	0.00165465	0.00165465	0.71	21.53
PROCESSING	Feb 25				(1,374.40)	0.00165465	0.00165465		(2.27)
PRODUCTION TAX	Feb 25				(830.29)	0.00165465	0.00165465		(1.37)
NON-PARTICIPATING ROYALTY INTEREST	Mar 25		1,615.90	28.25	45,643.25	0.00165465	0.00165465	2.67	75.52
PROCESSING	Mar 25				(5,142.38)	0.00165465	0.00165465		(8.51)
PRODUCTION TAX	Mar 25				(2,854.03)	0.00165465	0.00165465		(4.72)
NON-PARTICIPATING ROYALTY INTEREST	Apr 25		0.00		0.00	0.00165465	0.00165465	3.15	85.31
PROCESSING	Apr 25				0.00	0.00165465	0.00165465		(9.45)
PRODUCTION TAX	Apr 25				(0.15)	0.00165465	0.00165465		(5.40)
NON-PARTICIPATING ROYALTY INTEREST	May 25		1,016.13	27.58	28,029.11	0.00165465	0.00165465	1.68	46.38

Represented Unit of Measure: Gas = MCFs, Plant Products = BBLs, Oil = BBLs

Generated on Friday, October 3, 2025 12:18 PM

© 2025 Enverus. All rights reserved. Unauthorized use prohibited.

Type	Production Date	Property Values				Owner Share			
		BTU	Volume	Price	Value	Owner Interest	Distribution Interest	Volume	Value
PROCESSING	May 25				(3,195.02)	0.00165465	0.00165465		(5.29)
PRODUCTION TAX	May 25				(1,754.96)	0.00165465	0.00165465		(2.90)



Revenue Statement

Owner

Operator

Check

OVINTIV USA INC
370 17TH ST STE 1700
DENVER, CO 80202-5632
1-866-917-3700
ovintiv@ownerrelationsupport.com

Check Number 3082085
Check Amount
Check Date August 20, 2025
Check Type ACH

Copyright Notice
© 2025 Enverus. All rights reserved. Unauthorized use prohibited.
Data, reports, user interface, software and other content which is accessed by users through EnergyLink constitutes copyright protected content owned by Enverus. Any unauthorized copying, scraping, downloading, retransmission, redistribution, reproduction, republishing or other duplication or modification of copyright protected content is a violation of Canadian and US federal copyright laws and may be subject to legal action. Other than downloading of PDF copies of processed invoices for use in an unmodified format by authorized users, no one has permission to copy, scrape, download, retransmit, redistribute, reproduce, republish, duplicate, modify or make public for commercial use this copyright protected content, in any form, without the express written permission of Enverus.



EnergyLink can provide this data in Excel, CDEX, or any other requested format.
Visit <https://app.energylink.com/Features> to find out more information or call EnergyLink Support at 1-888-573-3364.



		Production Date	Property Values				Owner Share			
			BTU	Volume	Price	Value	Owner Interest	Distribution Interest	Volume	Value
Property: 92595		EL RANCHO W 86A 2HJ, State: TX, County: MARTIN								
GAS (MCF)										
	NON-PARTICIPATING ROYALTY INTEREST	Jun 25	1.4660	17,744.25	1.49	26,429.80	0.00165627	0.00165627	29.39	43.78
	COMPRESSION	Jun 25				(7,862.37)	0.00165627	0.00165627		(13.02)
	TREATING	Jun 25				(6,354.33)	0.00165627	0.00165627		(10.52)
	GATHERING	Jun 25				(2,894.91)	0.00165627	0.00165627		(4.79)
	HIGH PRESSURE GATHERING	Jun 25				(4,867.18)	0.00165627	0.00165627		(8.06)
	PROCESSING FUEL	Jun 25				(1,492.29)	0.00165627	0.00165627		(2.47)
	ENVIRONMENTAL TAX (GAS)	Jun 25				(16.50)	0.00165627	0.00165627		(0.03)
	PRODUCTION TAX	Jun 25				(39.12)	0.00165627	0.00165627		(0.07)

OIL (BBLs)

NON-PARTICIPATING ROYALTY INTEREST	Jun 25	33,730.87	68.85	2,322,241.88	0.00165627	0.00165627	55.87	3,846.26
------------------------------------	--------	-----------	-------	--------------	------------	------------	-------	----------

Represented Unit of Measure: Gas = MCFs, Plant Products = BBLs, Oil = BBLs

Generated on Friday, October 3, 2025 12:18 PM

© 2025 Enverus. All rights reserved. Unauthorized use prohibited.

Type	Production Date	Property Values				Owner Share			
		BTU	Volume	Price	Value	Owner Interest	Distribution Interest	Volume	Value
COND/OIL TRANSPORTATION	Jun 25				(36,901.49)	0.00165627	0.00165627		(61.12)
OIL TRANSPORT FUEL	Jun 25				(4,644.48)	0.00165627	0.00165627		(7.69)
ENVIRONMENTAL TAX (GAS)	Jun 25				(210.82)	0.00165627	0.00165627		(0.35)
PRODUCTION TAX	Jun 25				(106,823.13)	0.00165627	0.00165627		(176.93)
PLANT PRODUCTS (BBLs)									
NON-PARTICIPATING ROYALTY INTEREST	Jun 25		4,777.70	25.87	123,579.92	0.00165627	0.00165627	7.91	204.68
PROCESSING	Jun 25				(16,019.05)	0.00165627	0.00165627		(26.53)
PRODUCTION TAX	Jun 25				(7,614.80)	0.00165627	0.00165627		(12.61)



Revenue Statement

Owner

Operator

OVINTIV USA INC
370 17TH ST STE 1700
DENVER, CO 80202-5632
1-866-917-3700
ovintiv@ownerrelationsupport.com

Check

Check Number	3082085
Check Amount	
Check Date	August 20, 2025
Check Type	ACH

Copyright Notice

© 2025 Enverus. All rights reserved. Unauthorized use prohibited.

Data, reports, user interface, software and other content which is accessed by users through EnergyLink constitutes copyright protected content owned by Enverus. Any unauthorized copying, scraping, downloading, retransmission, redistribution, reproduction, republishing or other duplication or modification of copyright protected content is a violation of Canadian and US federal copyright laws and may be subject to legal action. Other than downloading of PDF copies of processed invoices for use in an unmodified format by authorized users, no one has permission to copy, scrape, download, retransmit, redistribute, reproduce, republish, duplicate, modify or make public for commercial use this copyright protected content, in any form, without the express written permission of Enverus.



EnergyLink can provide this data in Excel, CDEX, or any other requested format.
Visit <https://app.energylink.com/Features> to find out more information or call EnergyLink Support at 1-888-573-3364.



		Production Date	Property Values				Owner Share			
			BTU	Volume	Price	Value	Owner Interest	Distribution Interest	Volume	Value
Property: 92599		EL RANCHO W 86B 3HF, State: TX, County: MARTIN								
GAS (MCF)										
	NON-PARTICIPATING ROYALTY INTEREST	Jun 25	1.4660	6,948.21	1.49	10,349.27	0.00165552	0.00165552	11.51	17.13
	COMPRESSION	Jun 25				(3,078.72)	0.00165552	0.00165552		(5.10)
	TREATING	Jun 25				(2,488.20)	0.00165552	0.00165552		(4.12)
	GATHERING	Jun 25				(1,133.58)	0.00165552	0.00165552		(1.88)
	HIGH PRESSURE GATHERING	Jun 25				(1,905.87)	0.00165552	0.00165552		(3.16)
	PROCESSING FUEL	Jun 25				(584.35)	0.00165552	0.00165552		(0.97)
	ENVIRONMENTAL TAX (GAS)	Jun 25				(6.47)	0.00165552	0.00165552		(0.01)
	PRODUCTION TAX	Jun 25				(15.31)	0.00165552	0.00165552		(0.03)
OIL (BBLs)										
	NON-PARTICIPATING ROYALTY INTEREST	Jun 25		8,168.15	68.85	562,346.01	0.00165552	0.00165552	13.52	930.98

Represented Unit of Measure: Gas = MCFs, Plant Products = BBLs, Oil = BBLs

Generated on Friday, October 3, 2025 12:18 PM

© 2025 Enverus. All rights reserved. Unauthorized use prohibited.

Type	Production Date	Property Values				Owner Share			
		BTU	Volume	Price	Value	Owner Interest	Distribution Interest	Volume	Value
COND/OIL TRANSPORTATION	Jun 25				(8,935.94)	0.00165552	0.00165552		(14.79)
OIL TRANSPORT FUEL	Jun 25				(1,124.69)	0.00165552	0.00165552		(1.86)
ENVIRONMENTAL TAX (GAS)	Jun 25				(51.05)	0.00165552	0.00165552		(0.08)
PRODUCTION TAX	Jun 25				(25,867.92)	0.00165552	0.00165552		(42.82)
PLANT PRODUCTS (BBLs)									
NON-PARTICIPATING ROYALTY INTEREST	Jun 25		1,870.83	25.87	48,390.94	0.00165552	0.00165552	3.10	80.11
PROCESSING	Jun 25				(6,272.68)	0.00165552	0.00165552		(10.38)
PRODUCTION TAX	Jun 25				(2,981.77)	0.00165552	0.00165552		(4.94)



Revenue Statement

Owner

Operator

Check

OVINTIV USA INC
370 17TH ST STE 1700
DENVER, CO 80202-5632
1-866-917-3700
ovintiv@ownerrelationsupport.com

Check Number 3082085
Check Amount
Check Date August 20, 2025
Check Type ACH

Copyright Notice

© 2025 Enverus. All rights reserved. Unauthorized use prohibited.

Data, reports, user interface, software and other content which is accessed by users through EnergyLink constitutes copyright protected content owned by Enverus. Any unauthorized copying, scraping, downloading, retransmission, redistribution, reproduction, republishing or other duplication or modification of copyright protected content is a violation of Canadian and US federal copyright laws and may be subject to legal action. Other than downloading of PDF copies of processed invoices for use in an unmodified format by authorized users, no one has permission to copy, scrape, download, retransmit, redistribute, reproduce, republish, duplicate, modify or make public for commercial use this copyright protected content, in any form, without the express written permission of Enverus.



EnergyLink can provide this data in Excel, CDEX, or any other requested format.
Visit <https://app.energylink.com/Features> to find out more information or call EnergyLink Support at 1-888-573-3364.



		Type	Production Date	Property Values				Owner Share			
				BTU	Volume	Price	Value	Owner Interest	Distribution Interest	Volume	Value
Property:	92600	EL RANCHO W 86D 6HJ, State: TX, County: MARTIN									
GAS (MCF)		NON-PARTICIPATING ROYALTY INTEREST	Jun 25	1.4660	13,799.76	1.49	20,554.52	0.00165546	0.00165546	22.84	34.02
		COMPRESSION	Jun 25				(6,114.59)	0.00165546	0.00165546		(10.12)
		TREATING	Jun 25				(4,941.78)	0.00165546	0.00165546		(8.18)
		GATHERING	Jun 25				(2,251.38)	0.00165546	0.00165546		(3.73)
		HIGH PRESSURE GATHERING	Jun 25				(3,785.22)	0.00165546	0.00165546		(6.27)
		PROCESSING FUEL	Jun 25				(1,160.56)	0.00165546	0.00165546		(1.92)
		ENVIRONMENTAL TAX (GAS)	Jun 25				(12.83)	0.00165546	0.00165546		(0.02)
		PRODUCTION TAX	Jun 25				(30.42)	0.00165546	0.00165546		(0.05)
OIL (BBLs)		NON-PARTICIPATING ROYALTY INTEREST	Jun 25		21,868.04	68.85	1,505,531.24	0.00165546	0.00165546	36.20	2,492.35

Represented Unit of Measure: Gas = MCFs, Plant Products = BBLs, Oil = BBLs

Generated on Friday, October 3, 2025 12:18 PM

© 2025 Enverus. All rights reserved. Unauthorized use prohibited.

Type	Production Date	Property Values				Owner Share			
		BTU	Volume	Price	Value	Owner Interest	Distribution Interest	Volume	Value
COND/OIL TRANSPORTATION	Jun 25				(23,923.59)	0.00165546	0.00165546		(39.60)
OIL TRANSPORT FUEL	Jun 25				(3,011.06)	0.00165546	0.00165546		(4.98)
ENVIRONMENTAL TAX (GAS)	Jun 25				(136.68)	0.00165546	0.00165546		(0.23)
PRODUCTION TAX	Jun 25				(69,254.44)	0.00165546	0.00165546		(114.65)
PLANT PRODUCTS (BBLs)									
NON-PARTICIPATING ROYALTY INTEREST	Jun 25		3,715.63	25.87	96,108.45	0.00165546	0.00165546	6.15	159.10
PROCESSING	Jun 25				(12,458.06)	0.00165546	0.00165546		(20.62)
PRODUCTION TAX	Jun 25				(5,922.05)	0.00165546	0.00165546		(9.80)



Revenue Statement

Owner

Operator

Check

OVINTIV USA INC
370 17TH ST STE 1700
DENVER, CO 80202-5632
1-866-917-3700
ovintiv@ownerrelationsupport.com

Check Number3082085
Check Amount
Check DateAugust 20, 2025
Check TypeACH

Copyright Notice
© 2025 Enverus. All rights reserved. Unauthorized use prohibited.
Data, reports, user interface, software and other content which is accessed by users through EnergyLink constitutes copyright protected content owned by Enverus. Any unauthorized copying, scraping, downloading, retransmission, redistribution, reproduction, republishing or other duplication or modification of copyright protected content is a violation of Canadian and US federal copyright laws and may be subject to legal action. Other than downloading of PDF copies of processed invoices for use in an unmodified format by authorized users, no one has permission to copy, scrape, download, retransmit, redistribute, reproduce, republish, duplicate, modify or make public for commercial use this copyright protected content, in any form, without the express written permission of Enverus.



EnergyLink can provide this data in Excel, CDEX, or any other requested format.
Visit <https://app.energylink.com/Features> to find out more information or call EnergyLink Support at 1-888-573-3364.



		Production Date	Property Values				Owner Share			
			BTU	Volume	Price	Value	Owner Interest	Distribution Interest	Volume	Value
Property:	92602	EL RANCHO W 86D 5HG, State: TX, County: MARTIN								
GAS (MCF)										
	NON-PARTICIPATING ROYALTY INTEREST	Jun 25	1.4660	22,969.94	1.49	34,213.36	0.00165597	0.00165597	38.04	56.66
	COMPRESSION	Jun 25				(10,177.84)	0.00165597	0.00165597		(16.85)
	TREATING	Jun 25				(8,225.68)	0.00165597	0.00165597		(13.62)
	GATHERING	Jun 25				(3,747.46)	0.00165597	0.00165597		(6.21)
	HIGH PRESSURE GATHERING	Jun 25				(6,300.56)	0.00165597	0.00165597		(10.43)
	PROCESSING FUEL	Jun 25				(1,931.77)	0.00165597	0.00165597		(3.20)
	ENVIRONMENTAL TAX (GAS)	Jun 25				(21.36)	0.00165597	0.00165597		(0.04)
	PRODUCTION TAX	Jun 25				(50.64)	0.00165597	0.00165597		(0.08)
OIL (BBLs)										
	NON-PARTICIPATING ROYALTY INTEREST	Jun 25		24,412.81	68.85	1,680,728.96	0.00165597	0.00165597	40.43	2,783.24

Represented Unit of Measure: Gas = MCFs, Plant Products = BBLs, Oil = BBLs

Generated on Friday, October 3, 2025 12:18 PM

Type	Production Date	Property Values				Owner Share			
		BTU	Volume	Price	Value	Owner Interest	Distribution Interest	Volume	Value
COND/OIL TRANSPORTATION	Jun 25				(26,707.56)	0.00165597	0.00165597		(44.23)
OIL TRANSPORT FUEL	Jun 25				(3,361.46)	0.00165597	0.00165597		(5.57)
ENVIRONMENTAL TAX (GAS)	Jun 25				(152.58)	0.00165597	0.00165597		(0.25)
PRODUCTION TAX	Jun 25				(77,313.53)	0.00165597	0.00165597		(128.03)
PLANT PRODUCTS (BBLs)									
NON-PARTICIPATING ROYALTY INTEREST	Jun 25		6,184.74	25.87	159,974.17	0.00165597	0.00165597	10.24	264.91
PROCESSING	Jun 25				(20,736.65)	0.00165597	0.00165597		(34.34)
PRODUCTION TAX	Jun 25				(9,857.35)	0.00165597	0.00165597		(16.32)



Revenue Statement

Owner

Operator

Check

OVINTIV USA INC
370 17TH ST STE 1700
DENVER, CO 80202-5632
1-866-917-3700
ovintiv@ownerrelationsupport.com

Check Number 3068056
Check Amount
Check Date July 20, 2025
Check Type ACH

Copyright Notice

© 2025 Enverus. All rights reserved. Unauthorized use prohibited.

Data, reports, user interface, software and other content which is accessed by users through EnergyLink constitutes copyright protected content owned by Enverus. Any unauthorized copying, scraping, downloading, retransmission, redistribution, reproduction, republishing or other duplication or modification of copyright protected content is a violation of Canadian and US federal copyright laws and may be subject to legal action. Other than downloading of PDF copies of processed invoices for use in an unmodified format by authorized users, no one has permission to copy, scrape, download, retransmit, redistribute, reproduce, republish, duplicate, modify or make public for commercial use this copyright protected content, in any form, without the express written permission of Enverus.



EnergyLink can provide this data in Excel, CDEX, or any other requested format.
Visit <https://app.energylink.com/Features> to find out more information or call EnergyLink Support at 1-888-573-3364.



		Production Date	Property Values				Owner Share			
			BTU	Volume	Price	Value	Owner Interest	Distribution Interest	Volume	Value
Property:	90986	BAUER #2, State: TX, County: MARTIN								
OIL (BBLs)										
	ROYALTY INTEREST	May 25		24.78	61.97	1,535.57	0.00167985	0.00167985	0.04	2.57
	ENVIRONMENTAL TAX (GAS)	May 25				(0.15)	0.00167985	0.00167985		0.00
	PRODUCTION TAX	May 25				(70.64)	0.00167985	0.00167985		(0.12)
	OIL GATHERING DEDUCTS	May 25				(54.52)	0.00167985	0.00167985		0.00
	ROYALTY INTEREST	May 25		24.78	61.97	1,535.57	0.00167985	0.00167985	0.04	2.57
	ENVIRONMENTAL TAX (GAS)	May 25				(0.15)	0.00167985	0.00167985		0.00
	PRODUCTION TAX	May 25				(70.64)	0.00167985	0.00167985		(0.12)
	OIL GATHERING DEDUCTS	May 25				(54.52)	0.00167985	0.00167985		0.00
Total OIL (BBLs)									0.08	4.90
Total Property										4.90

Represented Unit of Measure: Gas = MCFs, Plant Products = BBLs, Oil = BBLs

Generated on Friday, October 3, 2025 12:18 PM

© 2025 Enverus. All rights reserved. Unauthorized use prohibited.



Revenue Statement

Owner

Operator

Check

OVINTIV USA INC
370 17TH ST STE 1700
DENVER, CO 80202-5632
1-866-917-3700
ovintiv@ownerrelationsupport.com

Check Number3068056
Check Amount
Check DateJuly 20, 2025
Check TypeACH

Copyright Notice
© 2025 Enverus. All rights reserved. Unauthorized use prohibited.
Data, reports, user interface, software and other content which is accessed by users through EnergyLink constitutes copyright protected content owned by Enverus. Any unauthorized copying, scraping, downloading, retransmission, redistribution, reproduction, republishing or other duplication or modification of copyright protected content is a violation of Canadian and US federal copyright laws and may be subject to legal action. Other than downloading of PDF copies of processed invoices for use in an unmodified format by authorized users, no one has permission to copy, scrape, download, retransmit, redistribute, reproduce, republish, duplicate, modify or make public for commercial use this copyright protected content, in any form, without the express written permission of Enverus.



EnergyLink can provide this data in Excel, CDEX, or any other requested format.
Visit <https://app.energylink.com/Features> to find out more information or call EnergyLink Support at 1-888-573-3364.



		Production Date	Property Values				Owner Share			
			BTU	Volume	Price	Value	Owner Interest	Distribution Interest	Volume	Value
Property:	91072	BAUER #4, State: TX, County: MARTIN								
OIL (BBLs)										
	ROYALTY INTEREST	May 25		70.30	61.97	4,356.36	0.00167985	0.00167985	0.12	7.32
	ENVIRONMENTAL TAX (GAS)	May 25				(0.44)	0.00167985	0.00167985		0.00
	PRODUCTION TAX	May 25				(200.39)	0.00167985	0.00167985		(0.34)
	OIL GATHERING DEDUCTS	May 25				(154.68)	0.00167985	0.00167985		0.00
	ROYALTY INTEREST	May 25		70.30	61.97	4,356.36	0.00167985	0.00167985	0.12	7.32
	ENVIRONMENTAL TAX (GAS)	May 25				(0.44)	0.00167985	0.00167985		0.00
	PRODUCTION TAX	May 25				(200.39)	0.00167985	0.00167985		(0.34)
	OIL GATHERING DEDUCTS	May 25				(154.68)	0.00167985	0.00167985		0.00
Total OIL (BBLs)									0.24	13.96
Total Property										13.96



Revenue Statement

Owner

Operator

Check

OVINTIV USA INC
370 17TH ST STE 1700
DENVER, CO 80202-5632
1-866-917-3700
ovintiv@ownerrelationsupport.com

Check Number3068056
Check Amount
Check DateJuly 20, 2025
Check TypeACH

Copyright Notice
© 2025 Enverus. All rights reserved. Unauthorized use prohibited.
Data, reports, user interface, software and other content which is accessed by users through EnergyLink constitutes copyright protected content owned by Enverus. Any unauthorized copying, scraping, downloading, retransmission, redistribution, reproduction, republishing or other duplication or modification of copyright protected content is a violation of Canadian and US federal copyright laws and may be subject to legal action. Other than downloading of PDF copies of processed invoices for use in an unmodified format by authorized users, no one has permission to copy, scrape, download, retransmit, redistribute, reproduce, republish, duplicate, modify or make public for commercial use this copyright protected content, in any form, without the express written permission of Enverus.



EnergyLink can provide this data in Excel, CDEX, or any other requested format.
Visit <https://app.energylink.com/Features> to find out more information or call EnergyLink Support at 1-888-573-3364.



		Production Date	Property Values				Owner Share			
			BTU	Volume	Price	Value	Owner Interest	Distribution Interest	Volume	Value
Property:	91081	BAUER #5, State: TX, County: MARTIN								
OIL (BBLs)										
	ROYALTY INTEREST	May 25		10.43	61.97	646.33	0.00167985	0.00167985	0.02	1.08
	ENVIRONMENTAL TAX (GAS)	May 25				(0.07)	0.00167985	0.00167985		0.00
	PRODUCTION TAX	May 25				(29.73)	0.00167985	0.00167985		(0.05)
	OIL GATHERING DEDUCTS	May 25				(22.95)	0.00167985	0.00167985		0.00
	ROYALTY INTEREST	May 25		10.43	61.97	646.33	0.00167985	0.00167985	0.02	1.08
	ENVIRONMENTAL TAX (GAS)	May 25				(0.07)	0.00167985	0.00167985		0.00
	PRODUCTION TAX	May 25				(29.73)	0.00167985	0.00167985		(0.05)
	OIL GATHERING DEDUCTS	May 25				(22.95)	0.00167985	0.00167985		0.00
Total OIL (BBLs)									0.04	2.06
Total Property										2.06



Revenue Statement

Owner

Operator

Check

OVINTIV USA INC
370 17TH ST STE 1700
DENVER, CO 80202-5632
1-866-917-3700
ovintiv@ownerrelationsupport.com

Check Number3068056
Check Amount
Check DateJuly 20, 2025
Check TypeACH

Copyright Notice
© 2025 Enverus. All rights reserved. Unauthorized use prohibited.
Data, reports, user interface, software and other content which is accessed by users through EnergyLink constitutes copyright protected content owned by Enverus. Any unauthorized copying, scraping, downloading, retransmission, redistribution, reproduction, republishing or other duplication or modification of copyright protected content is a violation of Canadian and US federal copyright laws and may be subject to legal action. Other than downloading of PDF copies of processed invoices for use in an unmodified format by authorized users, no one has permission to copy, scrape, download, retransmit, redistribute, reproduce, republish, duplicate, modify or make public for commercial use this copyright protected content, in any form, without the express written permission of Enverus.



EnergyLink can provide this data in Excel, CDEX, or any other requested format.
Visit <https://app.energylink.com/Features> to find out more information or call EnergyLink Support at 1-888-573-3364.



		Production Date	Property Values				Owner Share			
			BTU	Volume	Price	Value	Owner Interest	Distribution Interest	Volume	Value
Property:	91126	BAUER #1, State: TX, County: MARTIN								
OIL (BBLs)										
	ROYALTY INTEREST	May 25		37.67	61.97	2,334.34	0.00167985	0.00167985	0.06	3.93
	ENVIRONMENTAL TAX (GAS)	May 25				(0.24)	0.00167985	0.00167985		0.00
	PRODUCTION TAX	May 25				(107.38)	0.00167985	0.00167985		(0.18)
	OIL GATHERING DEDUCTS	May 25				(82.89)	0.00167985	0.00167985		0.00
	ROYALTY INTEREST	May 25		37.67	61.97	2,334.34	0.00167985	0.00167985	0.06	3.93
	ENVIRONMENTAL TAX (GAS)	May 25				(0.24)	0.00167985	0.00167985		0.00
	PRODUCTION TAX	May 25				(107.38)	0.00167985	0.00167985		(0.18)
	OIL GATHERING DEDUCTS	May 25				(82.89)	0.00167985	0.00167985		0.00
Total OIL (BBLs)									0.12	7.50
Total Property										7.50



Revenue Statement

Owner

Operator

Check

OVINTIV USA INC
370 17TH ST STE 1700
DENVER, CO 80202-5632
1-866-917-3700
ovintiv@ownerrelationsupport.com

Check Number3068056
Check Amount
Check DateJuly 20, 2025
Check TypeACH

Copyright Notice
© 2025 Enverus. All rights reserved. Unauthorized use prohibited.
Data, reports, user interface, software and other content which is accessed by users through EnergyLink constitutes copyright protected content owned by Enverus. Any unauthorized copying, scraping, downloading, retransmission, redistribution, reproduction, republishing or other duplication or modification of copyright protected content is a violation of Canadian and US federal copyright laws and may be subject to legal action. Other than downloading of PDF copies of processed invoices for use in an unmodified format by authorized users, no one has permission to copy, scrape, download, retransmit, redistribute, reproduce, republish, duplicate, modify or make public for commercial use this copyright protected content, in any form, without the express written permission of Enverus.



EnergyLink can provide this data in Excel, CDEX, or any other requested format.
Visit <https://app.energylink.com/Features> to find out more information or call EnergyLink Support at 1-888-573-3364.



Type		Production Date	Property Values				Owner Share			
			BTU	Volume	Price	Value	Owner Interest	Distribution Interest	Volume	Value
Property:	91286	BAUER #3, State: TX, County: MARTIN								
OIL (BBLs)										
	ROYALTY INTEREST	May 25		46.76	61.97	2,897.63	0.00167985	0.00167985	0.08	4.86
	ENVIRONMENTAL TAX (GAS)	May 25				(0.29)	0.00167985	0.00167985		0.00
	PRODUCTION TAX	May 25				(133.29)	0.00167985	0.00167985		(0.22)
	OIL GATHERING DEDUCTS	May 25				(102.89)	0.00167985	0.00167985		0.00
	ROYALTY INTEREST	May 25		46.76	61.97	2,897.63	0.00167985	0.00167985	0.08	4.86
	ENVIRONMENTAL TAX (GAS)	May 25				(0.29)	0.00167985	0.00167985		0.00
	PRODUCTION TAX	May 25				(133.29)	0.00167985	0.00167985		(0.22)
	OIL GATHERING DEDUCTS	May 25				(102.89)	0.00167985	0.00167985		0.00
Total OIL (BBLs)									0.16	9.28
Total Property										9.28

Represented Unit of Measure: Gas = MCFs, Plant Products = BBLs, Oil = BBLs

Generated on Friday, October 3, 2025 12:18 PM

© 2025 Enverus. All rights reserved. Unauthorized use prohibited.



Revenue Statement

Owner

Operator

Check

OVINTIV USA INC
370 17TH ST STE 1700
DENVER, CO 80202-5632
1-866-917-3700
ovintiv@ownerrelationsupport.com

Check Number 3068056
Check Amount
Check Date July 20, 2025
Check Type ACH

Copyright Notice
© 2025 Enverus. All rights reserved. Unauthorized use prohibited.
Data, reports, user interface, software and other content which is accessed by users through EnergyLink constitutes copyright protected content owned by Enverus. Any unauthorized copying, scraping, downloading, retransmission, redistribution, reproduction, republishing or other duplication or modification of copyright protected content is a violation of Canadian and US federal copyright laws and may be subject to legal action. Other than downloading of PDF copies of processed invoices for use in an unmodified format by authorized users, no one has permission to copy, scrape, download, retransmit, redistribute, reproduce, republish, duplicate, modify or make public for commercial use this copyright protected content, in any form, without the express written permission of Enverus.



EnergyLink can provide this data in Excel, CDEX, or any other requested format.
Visit <https://app.energylink.com/Features> to find out more information or call EnergyLink Support at 1-888-573-3364.



		Production Date	Property Values				Owner Share			
			BTU	Volume	Price	Value	Owner Interest	Distribution Interest	Volume	Value
Property: 92592		EL RANCHO W 86C 4HJ, State: TX, County: MARTIN								
GAS (MCF)										
	NON-PARTICIPATING ROYALTY INTEREST	May 25	1.0000	13,713.79	0.54	7,339.43	0.00165630	0.00165630	22.71	12.16
	ENVIRONMENTAL TAX (GAS)	May 25				(13.41)	0.00165630	0.00165630		(0.02)
	PRODUCTION TAX	May 25				705.59	0.00165630	0.00165630		1.16
	COMPRESSION	May 25				(6,864.95)	0.00165630	0.00165630		(11.37)
	TREATING	May 25				(3,510.81)	0.00165630	0.00165630		(5.82)
	GATHERING	May 25				(885.16)	0.00165630	0.00165630		(1.47)
	HIGH PRESSURE GATHERING	May 25				(4,249.73)	0.00165630	0.00165630		(7.04)
	PROCESSING FUEL	May 25				(456.20)	0.00165630	0.00165630		(0.76)
OIL (BBLs)										
	NON-PARTICIPATING ROYALTY INTEREST	May 25		25,439.10	63.18	1,607,352.89	0.00165630	0.00165630	42.13	2,662.26

Represented Unit of Measure: Gas = MCFs, Plant Products = BBLs, Oil = BBLs

Generated on Friday, October 3, 2025 12:17 PM

© 2025 Enverus. All rights reserved. Unauthorized use prohibited.

Type	Production Date	Property Values				Owner Share			
		BTU	Volume	Price	Value	Owner Interest	Distribution Interest	Volume	Value
ENVIRONMENTAL TAX (GAS)	May 25				(158.99)	0.00165630	0.00165630		(0.26)
PRODUCTION TAX	May 25				(73,938.23)	0.00165630	0.00165630		(122.46)
COND/OIL TRANSPORTATION	May 25				(27,612.03)	0.00165630	0.00165630		(45.73)
OIL TRANSPORT FUEL	May 25				(3,214.71)	0.00165630	0.00165630		(5.32)
PLANT PRODUCTS (BBLs)									
NON-PARTICIPATING ROYALTY INTEREST	May 25		4,448.30	27.58	122,703.12	0.00165630	0.00165630	7.37	203.23
PRODUCTION TAX	May 25				(7,682.70)	0.00165630	0.00165630		(12.72)
PROCESSING	May 25				(13,986.87)	0.00165630	0.00165630		(23.17)



Revenue Statement

Owner

Operator

Check

OVINTIV USA INC
370 17TH ST STE 1700
DENVER, CO 80202-5632
1-866-917-3700
ovintiv@ownerrelationsupport.com

Check Number3068056
Check Amount
Check DateJuly 20, 2025
Check TypeACH

Copyright Notice
© 2025 Enverus. All rights reserved. Unauthorized use prohibited.
Data, reports, user interface, software and other content which is accessed by users through EnergyLink constitutes copyright protected content owned by Enverus. Any unauthorized copying, scraping, downloading, retransmission, redistribution, reproduction, republishing or other duplication or modification of copyright protected content is a violation of Canadian and US federal copyright laws and may be subject to legal action. Other than downloading of PDF copies of processed invoices for use in an unmodified format by authorized users, no one has permission to copy, scrape, download, retransmit, redistribute, reproduce, republish, duplicate, modify or make public for commercial use this copyright protected content, in any form, without the express written permission of Enverus.



EnergyLink can provide this data in Excel, CDEX, or any other requested format.
Visit <https://app.energylink.com/Features> to find out more information or call EnergyLink Support at 1-888-573-3364.



		Production Date	Property Values				Owner Share			
			BTU	Volume	Price	Value	Owner Interest	Distribution Interest	Volume	Value
Property:	92593	EL RANCHO W 86A 1HD, State: TX, County: MARTIN								
GAS (MCF)										
	NON-PARTICIPATING ROYALTY INTEREST	Jan 25	1.2930	(124.01)	2.33	(288.82)	0.00165465	0.00165465	(0.20)	(0.47)
	ENVIRONMENTAL TAX (GAS)	Jan 25				0.11	0.00165465	0.00165465		0.00
	PRODUCTION TAX	Jan 25				8.71	0.00165465	0.00165465		0.01
	COMPRESSION	Jan 25				46.44	0.00165465	0.00165465		0.08
	TREATING	Jan 25				27.62	0.00165465	0.00165465		0.05
	GATHERING	Jan 25				25.75	0.00165465	0.00165465		0.04
	HIGH PRESSURE GATHERING	Jan 25				35.89	0.00165465	0.00165465		0.06
	PROCESSING FUEL	Jan 25				13.36	0.00165465	0.00165465		0.02
	NON-PARTICIPATING ROYALTY INTEREST	Feb 25	1.4900	(1,320.47)	2.13	(2,806.79)	0.00165465	0.00165465	(2.19)	(4.64)
	ENVIRONMENTAL TAX (GAS)	Feb 25				1.30	0.00165465	0.00165465		0.00
	PRODUCTION TAX	Feb 25				25.01	0.00165465	0.00165465		0.04

Represented Unit of Measure: Gas = MCFs, Plant Products = BBLs, Oil = BBLs

Generated on Friday, October 3, 2025 12:17 PM

© 2025 Enverus. All rights reserved. Unauthorized use prohibited.

Type	Production Date	Property Values				Owner Share			
		BTU	Volume	Price	Value	Owner Interest	Distribution Interest	Volume	Value
COMPRESSION	Feb 25				663.78	0.00165465	0.00165465		1.10
TREATING	Feb 25				503.64	0.00165465	0.00165465		0.83
GATHERING	Feb 25				343.37	0.00165465	0.00165465		0.57
HIGH PRESSURE GATHERING	Feb 25				512.92	0.00165465	0.00165465		0.85
PROCESSING FUEL	Feb 25				176.94	0.00165465	0.00165465		0.29
NON-PARTICIPATING ROYALTY INTEREST	Mar 25	1.4900	(4,940.66)	-0.06	300.04	0.00165465	0.00165465	(8.18)	0.49
ENVIRONMENTAL TAX (GAS)	Mar 25				4.88	0.00165465	0.00165465		0.01
PRODUCTION TAX	Mar 25				(487.18)	0.00165465	0.00165465		(0.81)
COMPRESSION	Mar 25				2,483.58	0.00165465	0.00165465		4.11
TREATING	Mar 25				1,884.41	0.00165465	0.00165465		3.12
GATHERING	Mar 25				(36.71)	0.00165465	0.00165465		(0.06)
HIGH PRESSURE GATHERING	Mar 25				1,919.13	0.00165465	0.00165465		3.18
PROCESSING FUEL	Mar 25				(18.92)	0.00165465	0.00165465		(0.03)
NON-PARTICIPATING ROYALTY INTEREST	Apr 25	1.0000	(5,422.02)	0.87	(4,737.70)	0.00165465	0.00165465	(8.97)	(7.84)
ENVIRONMENTAL TAX (GAS)	Apr 25				5.48	0.00165465	0.00165465		0.01
PRODUCTION TAX	Apr 25				(163.00)	0.00165465	0.00165465		(0.27)
COMPRESSION	Apr 25				2,803.85	0.00165465	0.00165465		4.64
TREATING	Apr 25				1,014.70	0.00165465	0.00165465		1.68
GATHERING	Apr 25				582.54	0.00165465	0.00165465		0.96
HIGH PRESSURE GATHERING	Apr 25				1,735.71	0.00165465	0.00165465		2.87
PROCESSING FUEL	Apr 25				300.26	0.00165465	0.00165465		0.50

	Type	Production Date	Property Values				Owner Share			
			BTU	Volume	Price	Value	Owner Interest	Distribution Interest	Volume	Value
OIL (BBLs)	NON-PARTICIPATING ROYALTY INTEREST	May 25		5,713.63	63.18	361,011.97	0.00165465	0.00165465	9.45	597.35
	ENVIRONMENTAL TAX (GAS)	May 25				(35.71)	0.00165465	0.00165465		(0.06)
	PRODUCTION TAX	May 25				(16,606.55)	0.00165465	0.00165465		(27.48)
	COND/OIL TRANSPORTATION	May 25				(6,201.67)	0.00165465	0.00165465		(10.26)
	OIL TRANSPORT FUEL	May 25				(722.02)	0.00165465	0.00165465		(1.19)
PLANT PRODUCTS (BBLs)	NON-PARTICIPATING ROYALTY INTEREST	Jan 25		(22.43)	25.05	(561.81)	0.00165465	0.00165465	(0.04)	(0.93)
	PRODUCTION TAX	Jan 25				32.80	0.00165465	0.00165465		0.05
	PROCESSING	Jan 25				96.17	0.00165465	0.00165465		0.16
	NON-PARTICIPATING ROYALTY INTEREST	Feb 25		(431.88)	30.13	(13,013.19)	0.00165465	0.00165465	(0.71)	(21.53)
	PRODUCTION TAX	Feb 25				830.29	0.00165465	0.00165465		1.37
	PROCESSING	Feb 25				1,374.40	0.00165465	0.00165465		2.27
	NON-PARTICIPATING ROYALTY INTEREST	Mar 25		(1,615.90)	28.25	(45,643.25)	0.00165465	0.00165465	(2.67)	(75.52)
	PRODUCTION TAX	Mar 25				2,854.03	0.00165465	0.00165465		4.72
	PROCESSING	Mar 25				5,142.38	0.00165465	0.00165465		8.51
	NON-PARTICIPATING ROYALTY INTEREST	Apr 25		(1,905.37)	27.06	(51,555.39)	0.00165465	0.00165465	(3.15)	(85.31)
	PRODUCTION TAX	Apr 25				3,265.19	0.00165465	0.00165465		5.40
	PROCESSING	Apr 25				5,712.64	0.00165465	0.00165465		9.45

Represented Unit of Measure: Gas = MCFs, Plant Products = BBLs, Oil = BBLs

Generated on Friday, October 3, 2025 12:17 PM

© 2025 Enverus. All rights reserved. Unauthorized use prohibited.



Revenue Statement

Owner

Operator

Check

OVINTIV USA INC
370 17TH ST STE 1700
DENVER, CO 80202-5632
1-866-917-3700
ovintiv@ownerrelationsupport.com

Check Number 3068056
Check Amount
Check Date July 20, 2025
Check Type ACH

Copyright Notice
© 2025 Enverus. All rights reserved. Unauthorized use prohibited.
Data, reports, user interface, software and other content which is accessed by users through EnergyLink constitutes copyright protected content owned by Enverus. Any unauthorized copying, scraping, downloading, retransmission, redistribution, reproduction, republishing or other duplication or modification of copyright protected content is a violation of Canadian and US federal copyright laws and may be subject to legal action. Other than downloading of PDF copies of processed invoices for use in an unmodified format by authorized users, no one has permission to copy, scrape, download, retransmit, redistribute, reproduce, republish, duplicate, modify or make public for commercial use this copyright protected content, in any form, without the express written permission of Enverus.



EnergyLink can provide this data in Excel, CDEX, or any other requested format.
Visit <https://app.energylink.com/Features> to find out more information or call EnergyLink Support at 1-888-573-3364.



		Production Date	Property Values				Owner Share			
			BTU	Volume	Price	Value	Owner Interest	Distribution Interest	Volume	Value
Property: 92595		EL RANCHO W 86A 2HJ, State: TX, County: MARTIN								
GAS (MCF)										
	NON-PARTICIPATING ROYALTY INTEREST	May 25	1.0000	16,822.09	0.54	9,002.95	0.00165627	0.00165627	27.87	14.91
	ENVIRONMENTAL TAX (GAS)	May 25				(16.44)	0.00165627	0.00165627		(0.03)
	PRODUCTION TAX	May 25				865.52	0.00165627	0.00165627		1.43
	COMPRESSION	May 25				(8,420.93)	0.00165627	0.00165627		(13.95)
	TREATING	May 25				(4,306.56)	0.00165627	0.00165627		(7.13)
	GATHERING	May 25				(1,085.78)	0.00165627	0.00165627		(1.80)
	HIGH PRESSURE GATHERING	May 25				(5,212.96)	0.00165627	0.00165627		(8.63)
	PROCESSING FUEL	May 25				(559.60)	0.00165627	0.00165627		(0.93)
OIL (BBLs)										
	NON-PARTICIPATING ROYALTY INTEREST	May 25		38,205.04	63.18	2,413,960.45	0.00165627	0.00165627	63.28	3,998.17

Represented Unit of Measure: Gas = MCFs, Plant Products = BBLs, Oil = BBLs

Generated on Friday, October 3, 2025 12:17 PM

© 2025 Enverus. All rights reserved. Unauthorized use prohibited.

Type	Production Date	Property Values				Owner Share			
		BTU	Volume	Price	Value	Owner Interest	Distribution Interest	Volume	Value
ENVIRONMENTAL TAX (GAS)	May 25				(238.78)	0.00165627	0.00165627		(0.40)
PRODUCTION TAX	May 25				(111,042.18)	0.00165627	0.00165627		(183.92)
COND/OIL TRANSPORTATION	May 25				(41,468.39)	0.00165627	0.00165627		(68.68)
OIL TRANSPORT FUEL	May 25				(4,827.92)	0.00165627	0.00165627		(8.00)
PLANT PRODUCTS (BBLs)									
NON-PARTICIPATING ROYALTY INTEREST	May 25		5,456.53	27.58	150,514.45	0.00165627	0.00165627	9.04	249.29
PRODUCTION TAX	May 25				(9,424.03)	0.00165627	0.00165627		(15.61)
PROCESSING	May 25				(17,157.07)	0.00165627	0.00165627		(28.42)



Revenue Statement

Owner

Operator

Check

OVINTIV USA INC
370 17TH ST STE 1700
DENVER, CO 80202-5632
1-866-917-3700
ovintiv@ownerrelationsupport.com

Check Number 3068056
Check Amount
Check Date July 20, 2025
Check Type ACH

Copyright Notice
© 2025 Enverus. All rights reserved. Unauthorized use prohibited.
Data, reports, user interface, software and other content which is accessed by users through EnergyLink constitutes copyright protected content owned by Enverus. Any unauthorized copying, scraping, downloading, retransmission, redistribution, reproduction, republishing or other duplication or modification of copyright protected content is a violation of Canadian and US federal copyright laws and may be subject to legal action. Other than downloading of PDF copies of processed invoices for use in an unmodified format by authorized users, no one has permission to copy, scrape, download, retransmit, redistribute, reproduce, republish, duplicate, modify or make public for commercial use this copyright protected content, in any form, without the express written permission of Enverus.



EnergyLink can provide this data in Excel, CDEX, or any other requested format.
Visit <https://app.energylink.com/Features> to find out more information or call EnergyLink Support at 1-888-573-3364.



			Property Values				Owner Share			
Type		Production Date	BTU	Volume	Price	Value	Owner Interest	Distribution Interest	Volume	Value
Property: 92599		EL RANCHO W 86B 3HF, State: TX, County: MARTIN								
GAS (MCF)										
	NON-PARTICIPATING ROYALTY INTEREST	May 25	1.0000	6,658.91	0.54	3,563.76	0.00165552	0.00165552	11.03	5.90
	ENVIRONMENTAL TAX (GAS)	May 25				(6.49)	0.00165552	0.00165552		(0.01)
	PRODUCTION TAX	May 25				344.19	0.00165552	0.00165552		0.57
	COMPRESSION	May 25				(3,333.37)	0.00165552	0.00165552		(5.52)
	TREATING	May 25				(1,704.72)	0.00165552	0.00165552		(2.82)
	GATHERING	May 25				(429.80)	0.00165552	0.00165552		(0.71)
	HIGH PRESSURE GATHERING	May 25				(2,063.52)	0.00165552	0.00165552		(3.42)
	PROCESSING FUEL	May 25				(221.52)	0.00165552	0.00165552		(0.37)
OIL (BBLs)										
	NON-PARTICIPATING ROYALTY INTEREST	May 25		10,807.76	63.18	682,881.24	0.00165552	0.00165552	17.89	1,130.52

Represented Unit of Measure: Gas = MCFs, Plant Products = BBLs, Oil = BBLs

Generated on Friday, October 3, 2025 12:17 PM

© 2025 Enverus. All rights reserved. Unauthorized use prohibited.

		Production Date	Property Values				Owner Share			
Type			BTU	Volume	Price	Value	Owner Interest	Distribution Interest	Volume	Value
ENVIRONMENTAL TAX (GAS)		May 25				(67.55)	0.00165552	0.00165552		(0.11)
PRODUCTION TAX		May 25				(31,412.54)	0.00165552	0.00165552		(52.00)
COND/OIL TRANSPORTATION		May 25				(11,730.92)	0.00165552	0.00165552		(19.42)
OIL TRANSPORT FUEL		May 25				(1,365.76)	0.00165552	0.00165552		(2.26)
PLANT PRODUCTS (BBLs)										
NON-PARTICIPATING ROYALTY INTEREST		May 25		2,159.93	27.58	59,580.20	0.00165552	0.00165552	3.58	98.64
PRODUCTION TAX		May 25				(3,730.44)	0.00165552	0.00165552		(6.18)
PROCESSING		May 25				(6,791.52)	0.00165552	0.00165552		(11.24)



Revenue Statement

Owner

Operator

Check

OVINTIV USA INC
370 17TH ST STE 1700
DENVER, CO 80202-5632
1-866-917-3700
ovintiv@ownerrelationsupport.com

Check Number 3068056
Check Amount
Check Date July 20, 2025
Check Type ACH

Copyright Notice
© 2025 Enverus. All rights reserved. Unauthorized use prohibited.
Data, reports, user interface, software and other content which is accessed by users through EnergyLink constitutes copyright protected content owned by Enverus. Any unauthorized copying, scraping, downloading, retransmission, redistribution, reproduction, republishing or other duplication or modification of copyright protected content is a violation of Canadian and US federal copyright laws and may be subject to legal action. Other than downloading of PDF copies of processed invoices for use in an unmodified format by authorized users, no one has permission to copy, scrape, download, retransmit, redistribute, reproduce, republish, duplicate, modify or make public for commercial use this copyright protected content, in any form, without the express written permission of Enverus.



EnergyLink can provide this data in Excel, CDEX, or any other requested format.
Visit <https://app.energylink.com/Features> to find out more information or call EnergyLink Support at 1-888-573-3364.



		Production Date	Property Values				Owner Share			
			BTU	Volume	Price	Value	Owner Interest	Distribution Interest	Volume	Value
Property: 92600		EL RANCHO W 86D 6HJ, State: TX, County: MARTIN								
GAS (MCF)										
	NON-PARTICIPATING ROYALTY INTEREST	May 25	1.0000	15,024.56	0.54	8,040.95	0.00165546	0.00165546	24.88	13.31
	ENVIRONMENTAL TAX (GAS)	May 25				(14.69)	0.00165546	0.00165546		(0.02)
	PRODUCTION TAX	May 25				773.03	0.00165546	0.00165546		1.28
	COMPRESSION	May 25				(7,521.11)	0.00165546	0.00165546		(12.45)
	TREATING	May 25				(3,846.38)	0.00165546	0.00165546		(6.37)
	GATHERING	May 25				(969.76)	0.00165546	0.00165546		(1.61)
	HIGH PRESSURE GATHERING	May 25				(4,655.93)	0.00165546	0.00165546		(7.71)
	PROCESSING FUEL	May 25				(499.81)	0.00165546	0.00165546		(0.83)
OIL (BBLs)										
	NON-PARTICIPATING ROYALTY INTEREST	May 25		29,054.58	63.18	1,835,794.62	0.00165546	0.00165546	48.10	3,039.08

Represented Unit of Measure: Gas = MCFs, Plant Products = BBLs, Oil = BBLs

Generated on Friday, October 3, 2025 12:17 PM

© 2025 Enverus. All rights reserved. Unauthorized use prohibited.

Type	Production Date	Property Values				Owner Share			
		BTU	Volume	Price	Value	Owner Interest	Distribution Interest	Volume	Value
ENVIRONMENTAL TAX (GAS)	May 25				(181.59)	0.00165546	0.00165546		(0.30)
PRODUCTION TAX	May 25				(84,446.55)	0.00165546	0.00165546		(139.80)
COND/OIL TRANSPORTATION	May 25				(31,536.33)	0.00165546	0.00165546		(52.21)
OIL TRANSPORT FUEL	May 25				(3,671.59)	0.00165546	0.00165546		(6.08)
PLANT PRODUCTS (BBLs)	NON-PARTICIPATING ROYALTY INTEREST	May 25	4,873.47	27.58	134,431.26	0.00165546	0.00165546	8.07	222.55
	PRODUCTION TAX	May 25			(8,417.03)	0.00165546	0.00165546		(13.93)
	PROCESSING	May 25			(15,323.75)	0.00165546	0.00165546		(25.37)



Revenue Statement

Owner

Operator

Check

OVINTIV USA INC
370 17TH ST STE 1700
DENVER, CO 80202-5632
1-866-917-3700
ovintiv@ownerrelationsupport.com

Check Number3068056
Check Amount
Check DateJuly 20, 2025
Check TypeACH

Copyright Notice
© 2025 Enverus. All rights reserved. Unauthorized use prohibited.
Data, reports, user interface, software and other content which is accessed by users through EnergyLink constitutes copyright protected content owned by Enverus. Any unauthorized copying, scraping, downloading, retransmission, redistribution, reproduction, republishing or other duplication or modification of copyright protected content is a violation of Canadian and US federal copyright laws and may be subject to legal action. Other than downloading of PDF copies of processed invoices for use in an unmodified format by authorized users, no one has permission to copy, scrape, download, retransmit, redistribute, reproduce, republish, duplicate, modify or make public for commercial use this copyright protected content, in any form, without the express written permission of Enverus.



EnergyLink can provide this data in Excel, CDEX, or any other requested format.
Visit <https://app.energylink.com/Features> to find out more information or call EnergyLink Support at 1-888-573-3364.



Type		Production Date	Property Values				Owner Share			
			BTU	Volume	Price	Value	Owner Interest	Distribution Interest	Volume	Value
Property: 92602		EL RANCHO W 86D 5HG, State: TX, County: MARTIN								
GAS (MCF)										
	NON-PARTICIPATING ROYALTY INTEREST	May 25	1.0000	19,370.65	0.54	10,366.91	0.00165597	0.00165597	32.08	17.16
	ENVIRONMENTAL TAX (GAS)	May 25				(18.94)	0.00165597	0.00165597		(0.03)
	PRODUCTION TAX	May 25				996.64	0.00165597	0.00165597		1.65
	COMPRESSION	May 25				(9,696.71)	0.00165597	0.00165597		(16.06)
	TREATING	May 25				(4,959.01)	0.00165597	0.00165597		(8.21)
	GATHERING	May 25				(1,250.28)	0.00165597	0.00165597		(2.07)
	HIGH PRESSURE GATHERING	May 25				(6,002.73)	0.00165597	0.00165597		(9.94)
	PROCESSING FUEL	May 25				(644.38)	0.00165597	0.00165597		(1.07)
OIL (BBLs)										
	NON-PARTICIPATING ROYALTY INTEREST	May 25		27,767.22	63.18	1,754,453.62	0.00165597	0.00165597	45.98	2,905.32

Represented Unit of Measure: Gas = MCFs, Plant Products = BBLs, Oil = BBLs

Generated on Friday, October 3, 2025 12:17 PM

© 2025 Enverus. All rights reserved. Unauthorized use prohibited.

Type	Production Date	Property Values				Owner Share			
		BTU	Volume	Price	Value	Owner Interest	Distribution Interest	Volume	Value
ENVIRONMENTAL TAX (GAS)	May 25				(173.55)	0.00165597	0.00165597		(0.29)
PRODUCTION TAX	May 25				(80,704.87)	0.00165597	0.00165597		(133.64)
COND/OIL TRANSPORTATION	May 25				(30,139.01)	0.00165597	0.00165597		(49.91)
OIL TRANSPORT FUEL	May 25				(3,508.91)	0.00165597	0.00165597		(5.81)
PLANT PRODUCTS (BBLs)									
NON-PARTICIPATING ROYALTY INTEREST	May 25		6,283.20	27.58	173,317.58	0.00165597	0.00165597	10.40	287.01
PRODUCTION TAX	May 25				(10,851.78)	0.00165597	0.00165597		(17.97)
PROCESSING	May 25				(19,756.38)	0.00165597	0.00165597		(32.72)



Production



Map of Wells on Bauer

Full Screen Map 3-D Map



Lease Summary

Here are a few key data points for the Bauer lease in Martin County.

County	Martin County, TX
Lease #	08-40835
Operator	OVINTIV USA INC.
Production Dates	Dec 2010 - May 2025
Total Oil Production	254,806 BBLs
Total Gas Production	189,192 MCF
Recent Oil Prod.	No Recent Prod.
Recent Gas Prod.	No Recent Prod.
Wells on Lease	5

Wells Associated with Bauer

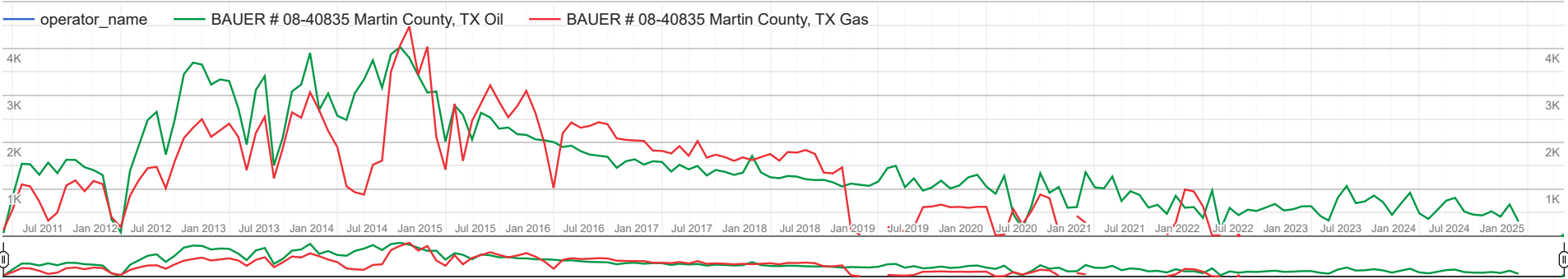
API #	Well Name	Operator	Status	County	Est. Daily Oil Prod.	Est. Daily Gas Prod.	Est. Daily Water Prod.	Latitude	Longitude
42-317-36102	BAUER 1	OVINTIV USA INC.	Producing	Martin County, TX	0 BBLs / day	0 MCF / day	51 BBLs / day	32.486493	-101.951470
42-317-37249	BAUER 2	OVINTIV USA INC.	Producing	Martin County, TX	0 BBLs / day	0 MCF / day	24 BBLs / day	32.497994	-101.955190
42-317-37575	BAUER 3	OVINTIV USA INC.	Producing	Martin County, TX	0 BBLs / day	0 MCF / day	33 BBLs / day	32.499023	-101.950155
42-317-38218	BAUER 4	OVINTIV USA INC.	Producing	Martin County, TX	0 BBLs / day	0 MCF / day	81 BBLs / day	32.487515	-101.946736
42-317-38806	BAUER 5	OVINTIV USA INC.	Producing	Martin County, TX	0 BBLs / day	0 MCF / day	20 BBLs / day	32.490481	-101.952775

Lease Production Search

/ Lease Production

Lease No contains 08-40835

Production Graph of Search Results



Date	BAUER # 08-40835 Martin County, TX	
	Oil Prod (BBLs)	Gas Prod (MCF)
Oct 2025	0	0
Sep 2025	0	0
Aug 2025	0	0
Jul 2025	0	0
Jun 2025	0	0
May 2025	1	0
Apr 2025	0	0
Mar 2025	0	0
Feb 2025	0	0
Jan 2025	0	0
Dec 2024	305	0
Nov 2024	673	0
Oct 2024	410	0
Sep 2024	524	0
Aug 2024	438	0
Date	BAUER # 08-40835 Martin County, TX	

Date	BAUER # 08-40835 Martin County, TX	
	Oil Prod (BBLs)	Gas Prod (MCF)
Jul 2024	454	0
Jun 2024	519	0
May 2024	813	0
Apr 2024	752	0
Mar 2024	546	0
Feb 2024	362	0
Jan 2024	482	0
Dec 2023	921	0
Nov 2023	697	0
Oct 2023	450	0
Sep 2023	719	0
Aug 2023	861	0
Jul 2023	736	0
Jun 2023	699	0
May 2023	1,065	0
Apr 2023	814	0
Mar 2023	327	0
Feb 2023	426	0
Jan 2023	634	0
Dec 2022	631	0
Nov 2022	568	0
Oct 2022	544	0
Sep 2022	681	0
Aug 2022	606	0
Jul 2022	533	0
Jun 2022	559	0
May 2022	443	6
Apr 2022	598	0
Mar 2022	130	11
Feb 2022	968	6
Jan 2022	384	631
Dec 2021	616	950
Nov 2021	601	990
Oct 2021	858	277
Sep 2021	470	24
Aug 2021	664	0
Jul 2021	604	0
Jun 2021	873	0
May 2021	953	0
Apr 2021	745	0
Date	BAUER # 08-40835 Martin County, TX	

Date	BAUER # 08-40835 Martin County, TX	
	Oil Prod (BBLs)	Gas Prod (MCF)
Mar 2021	1,267	0
Feb 2021	1,015	0
Jan 2021	1,037	0
Dec 2020	1,359	277
Nov 2020	616	426
Oct 2020	601	0
Sep 2020	1,044	97
Aug 2020	921	805
Jul 2020	1,337	884
Jun 2020	634	529
May 2020	154	245
Apr 2020	465	571
Mar 2020	1,281	30
Feb 2020	899	8
Jan 2020	1,052	620
Dec 2019	1,305	620
Nov 2019	1,251	600
Oct 2019	1,075	620
Sep 2019	1,014	612
Aug 2019	1,180	667
Jul 2019	1,035	627
Jun 2019	966	614
May 2019	1,228	184
Apr 2019	1,040	94
Mar 2019	1,497	135
Feb 2019	1,447	192
Jan 2019	1,160	0
Dec 2018	1,069	0
Nov 2018	1,090	20
Oct 2018	1,118	136
Sep 2018	1,055	1,463
Aug 2018	1,144	1,335
Jul 2018	1,196	1,352
Jun 2018	1,192	1,752
May 2018	1,211	1,833
Apr 2018	1,267	1,779
Mar 2018	1,279	1,791
Feb 2018	1,232	1,606
Jan 2018	1,253	1,749
Dec 2017	1,355	1,682
Date	BAUER # 08-40835 Martin County, TX	

Date	BAUER # 08-40835 Martin County, TX	
	Oil Prod (BBLs)	Gas Prod (MCF)
Nov 2017	1,709	1,618
Oct 2017	1,350	1,677
Sep 2017	1,303	1,603
Aug 2017	1,368	1,683
Jul 2017	1,408	1,734
Jun 2017	1,290	1,672
May 2017	1,494	2,027
Apr 2017	1,420	1,711
Mar 2017	1,519	1,917
Feb 2017	1,373	1,761
Jan 2017	1,578	1,815
Dec 2016	1,595	1,822
Nov 2016	1,523	2,027
Oct 2016	1,635	2,039
Sep 2016	1,594	2,051
Aug 2016	1,453	2,083
Jul 2016	1,689	2,386
Jun 2016	1,713	2,426
May 2016	1,738	2,347
Apr 2016	1,811	2,311
Mar 2016	1,927	2,422
Feb 2016	1,899	2,197
Jan 2016	2,004	1,024
Dec 2015	2,042	1,979
Nov 2015	2,061	2,622
Oct 2015	2,157	3,098
Sep 2015	2,171	2,779
Aug 2015	2,315	2,533
Jul 2015	2,290	2,866
Jun 2015	2,529	3,217
May 2015	2,630	2,831
Apr 2015	2,058	2,461
Mar 2015	2,587	1,604
Feb 2015	2,787	2,817
Jan 2015	2,015	1,416
Dec 2014	3,084	2,120
Nov 2014	3,062	4,041
Oct 2014	3,430	3,440
Sep 2014	3,803	4,472
Aug 2014	4,034	4,069
Date	BAUER # 08-40835 Martin County, TX	

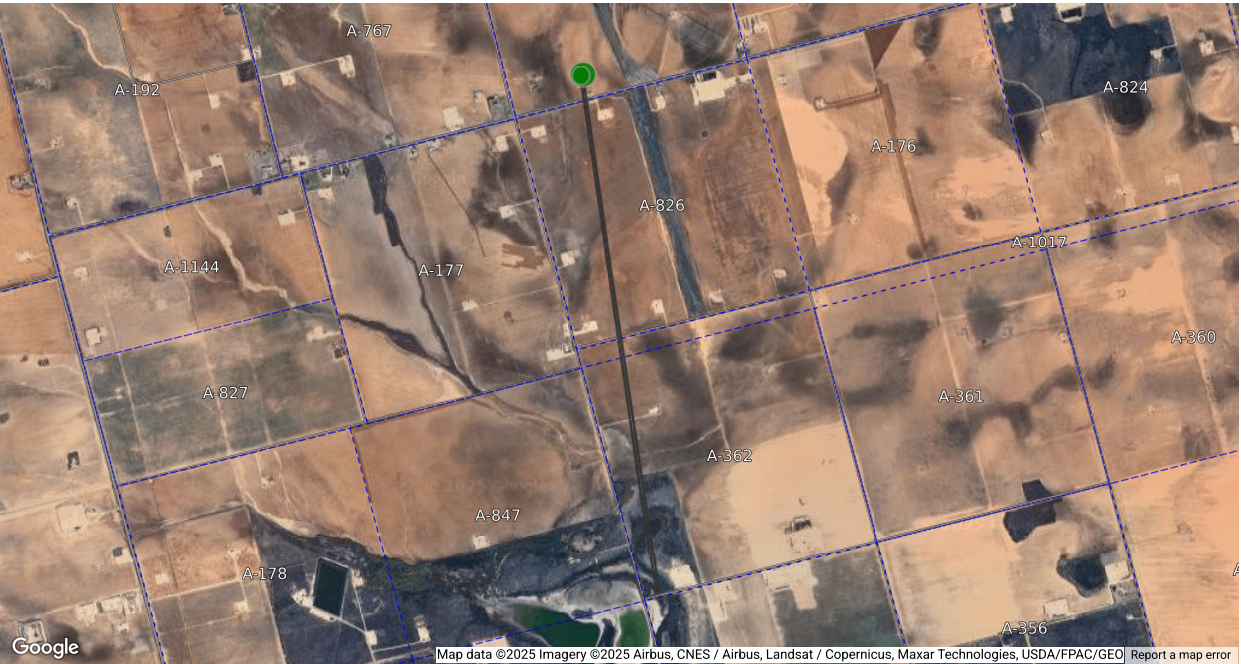
Date	BAUER # 08-40835 Martin County, TX	
	Oil Prod (BBLs)	Gas Prod (MCF)
Jul 2014	3,879	3,507
Jun 2014	3,166	1,606
May 2014	3,752	1,520
Apr 2014	3,339	882
Mar 2014	3,049	933
Feb 2014	2,477	1,058
Jan 2014	2,567	1,897
Dec 2013	3,043	2,243
Nov 2013	2,694	2,678
Oct 2013	3,905	3,068
Sep 2013	3,232	2,524
Aug 2013	3,087	2,639
Jul 2013	2,103	1,872
Jun 2013	1,503	1,229
May 2013	3,412	2,545
Apr 2013	3,116	2,198
Mar 2013	1,954	1,407
Feb 2013	2,722	2,111
Jan 2013	3,307	2,397
Dec 2012	3,342	2,252
Nov 2012	3,232	2,116
Oct 2012	3,659	2,493
Sep 2012	3,701	2,309
Aug 2012	3,452	2,088
Jul 2012	2,477	1,591
Jun 2012	1,740	1,016
May 2012	2,649	1,474
Apr 2012	2,477	1,447
Mar 2012	1,915	1,182
Feb 2012	1,385	855
Jan 2012	76	188
Dec 2011	349	398
Nov 2011	1,299	1,105
Oct 2011	1,405	1,173
Sep 2011	1,466	954
Aug 2011	1,623	1,184
Jul 2011	1,625	1,077
Jun 2011	1,340	500
May 2011	1,565	325
Apr 2011	1,305	734
Date	BAUER # 08-40835 Martin County, TX	

Date	BAUER # 08-40835 Martin County, TX	
	Oil Prod (BBLs)	Gas Prod (MCF)
Mar 2011	1,530	1,059
Feb 2011	1,540	1,099
Jan 2011	840	567
Dec 2010	61	124
Date	BAUER # 08-40835 Martin County, TX	

El Rancho W 86a Oil & Gas Lease in Martin County, TX

/ Texas / Martin County, TX / Properties Martin County, TX / El Rancho W 86 Property / El Rancho W 86a

Map of Wells on El Rancho W 86a



Lease Summary

Here are a few key data points for the El Rancho W 86a lease in Martin County.

County	Martin County, TX
Lease #	08-62627
Operator	OVINTIV USA INC.
Production Dates	Jan 2025 - Jul 2025
Total Oil Production	36,484 BBLs
Total Gas Production	38,180 MCF
Recent Oil Prod.	7,772 BBLs in Jun 2025
Recent Gas Prod.	5,880 MCF in Jun 2025
Wells on Lease	2

Wells Associated with El Rancho W 86a

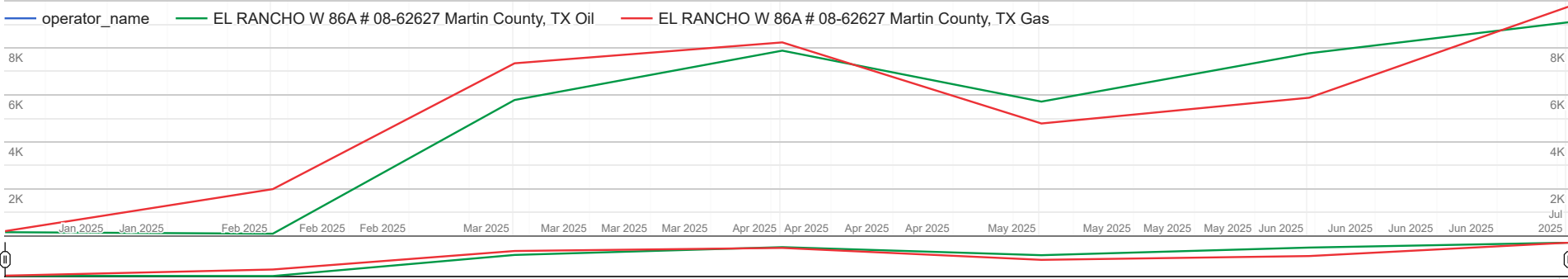
API #	Well Name	Operator	Status	County	Est. Daily Oil Prod.	Est. Daily Gas Prod.	Est. Daily Water Prod.	Latitude	Longitude
42-317-46073	EL RANCHO W 86A 1HD	OVINTIV USA INC.	Producing	Martin County, TX	43 BBLs / day	46 MCF / day	4,990 BBLs / day	32.501534	-101.952211
42-317-46074	EL RANCHO W 86A 2HJ	OVINTIV USA INC.	Shut In	Martin County, TX	216 BBLs / day	150 MCF / day	2,583 BBLs / day	32.501569	-101.952045

Lease Production Search

/ Lease Production

Lease No contains 08-62627

Production Graph of Search Results



Date	EL RANCHO W 86A	
	# 08-62627	
	Martin County, TX	
	Oil Prod (BBLs)	Gas Prod (MCF)
Oct 2025	0	0
Sep 2025	0	0
Aug 2025	0	0
Jul 2025	9,092	9,753
Jun 2025	7,772	5,880
May 2025	5,714	4,782
Apr 2025	7,885	8,236
Mar 2025	5,783	7,346
Feb 2025	87	1,986
Jan 2025	151	197

El Rancho W 86B Oil & Gas Lease in Martin County, TX

/ Texas / Martin County, TX / Properties Martin County, TX / El Rancho W 86 Property / El Rancho W 86B

Map of Wells on El Rancho W 86B



Lease Summary

Here are a few key data points for the El Rancho W 86B lease in Martin County.

County	Martin County, TX
Lease #	08-62628
Operator	OVINTIV USA INC.
Production Dates	Jan 2025 - Jul 2025
Total Oil Production	75,420 BBLs
Total Gas Production	70,568 MCF
Recent Oil Prod.	8,162 BBLs in Jun 2025
Recent Gas Prod.	9,835 MCF in Jun 2025
Wells on Lease	1

Wells Associated with El Rancho W 86B

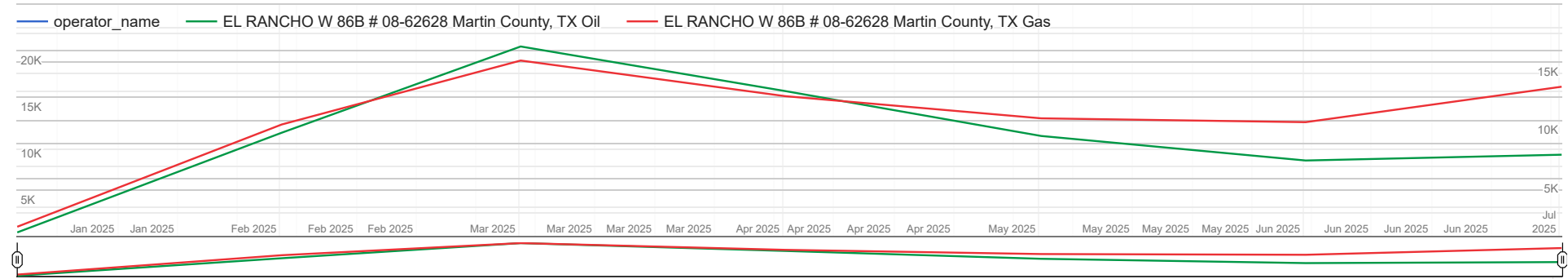
API #	Well Name	Operator	Status	County	Est. Daily Oil Prod.	Est. Daily Gas Prod.	Est. Daily Water Prod.	Latitude	Longitude
42-317-46075	EL RANCHO W 86B 3HF	OVINTIV USA INC.	Producing	Martin County, TX	272 BBLs / day	328 MCF / day	3,766 BBLs / day	32.501605	-101.951881

Lease Production Search

/ Lease Production

Lease No contains 08-62628

Production Graph of Search Results



Date	EL RANCHO W 86B	
	# 08-62628	
	Martin County, TX	
	Oil Prod (BBLs)	Gas Prod (MCF)
Oct 2025	0	0
Sep 2025	0	0
Aug 2025	0	0
Jul 2025	8,787	12,890
Jun 2025	8,162	9,835
May 2025	10,806	10,165
Apr 2025	15,645	12,076
Mar 2025	20,448	15,147
Feb 2025	11,158	9,636
Jan 2025	414	819

El Rancho W 86C Oil & Gas Lease in Martin County, TX

/ Texas / Martin County, TX / Properties Martin County, TX / El Rancho W 86 Property / El Rancho W 86C

Map of Wells on El Rancho W 86C



Lease Summary

Here are a few key data points for the El Rancho W 86C lease in Martin County.

County	Martin County, TX
Lease #	08-63031
Operator	OVINTIV USA INC.
Production Dates	Jan 2025 - Jul 2025
Total Oil Production	149,361 BBLs
Total Gas Production	113,163 MCF
Recent Oil Prod.	17,874 BBLs in Jun 2025
Recent Gas Prod.	16,964 MCF in Jun 2025
Wells on Lease	1

Wells Associated with El Rancho W 86C

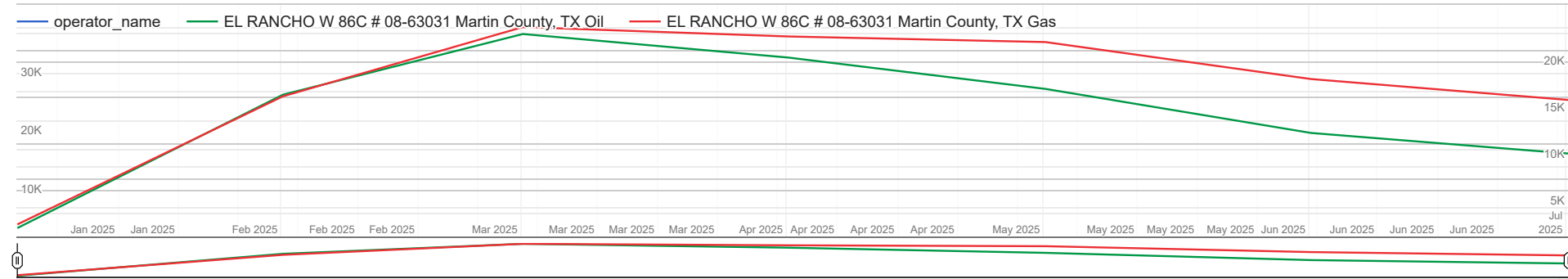
API #	Well Name	Operator	Status	County	Est. Daily Oil Prod.	Est. Daily Gas Prod.	Est. Daily Water Prod.	Latitude	Longitude
42-317-46076	EL RANCHO W 86C 4HJ	OVINTIV USA INC.	Producing	Martin County, TX	596 BBLs / day	565 MCF / day	2,774 BBLs / day	32.501641	-101.951714

Lease Production Search

/ Lease Production

Lease No contains 08-63031

Production Graph of Search Results



Date	EL RANCHO W 86C # 08-63031 Martin County, TX	
	Oil Prod (BBLs)	Gas Prod (MCF)
Oct 2025	0	0
Sep 2025	0	0
Aug 2025	0	0
Jul 2025	14,341	14,721
Jun 2025	17,874	16,964
May 2025	25,447	20,937
Apr 2025	30,833	21,539
Mar 2025	34,885	22,548
Feb 2025	24,454	15,110
Jan 2025	1,527	1,344

El Rancho W 86D Oil & Gas Lease in Martin County, TX

/ Texas / Martin County, TX / Properties Martin County, TX / El Rancho W 86 Property / El Rancho W 86D

Map of Wells on El Rancho W 86D



Lease Summary

Here are a few key data points for the El Rancho W 86D lease in Martin County.

County	Martin County, TX
Lease #	08-63032
Operator	OVINTIV USA INC.
Production Dates	Jan 2025 - Jul 2025
Total Oil Production	134,874 BBLs
Total Gas Production	142,285 MCF
Recent Oil Prod.	24,407 BBLs in Jun 2025
Recent Gas Prod.	32,514 MCF in Jun 2025
Wells on Lease	2

Wells Associated with El Rancho W 86D

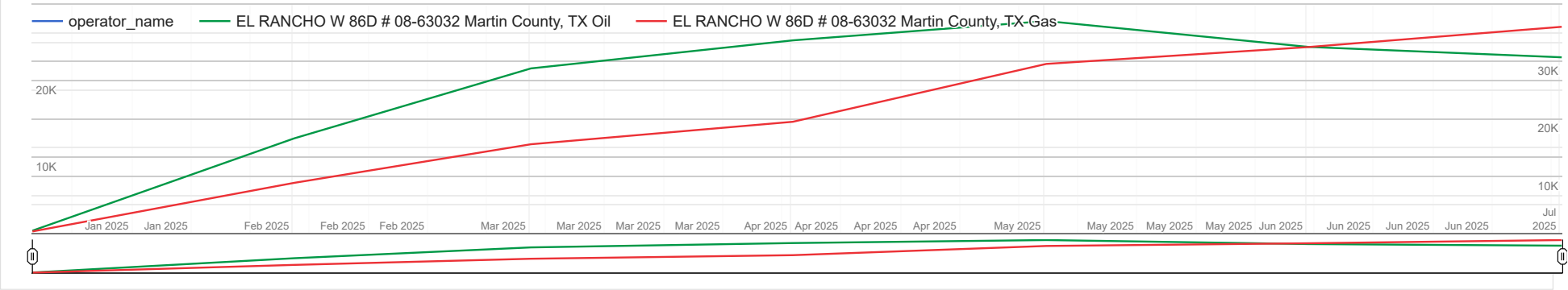
API #	Well Name	Operator	Status	County	Est. Daily Oil Prod.	Est. Daily Gas Prod.	Est. Daily Water Prod.	Latitude	Longitude
42-317-46077	EL RANCHO W 86D 5HG	OVINTIV USA INC.	Producing	Martin County, TX	814 BBLs / day	1,084 MCF / day	4,159 BBLs / day	32.501863	-101.950678
42-317-46079	EL RANCHO W 86D 6HJ	OVINTIV USA INC.	Shut In	Martin County, TX	0 BBLs / day	0 MCF / day	0 BBLs / day	32.501898	-101.950513

Lease Production Search

/ Lease Production

Lease No contains 08-63032

Production Graph of Search Results



Date	EL RANCHO W 86D # 08-63032 Martin County, TX	
	Oil Prod (BBLs)	Gas Prod (MCF)
Oct 2025	0	0
Sep 2025	0	0
Aug 2025	0	0
Jul 2025	23,044	36,051
Jun 2025	24,407	32,514
May 2025	27,795	29,572
Apr 2025	25,263	19,470
Mar 2025	21,589	15,545
Feb 2025	12,435	8,811
Jan 2025	341	322



Conveyance Document

Please note the following draft deed/assignment has been prepared by the seller in advance of sale. The successful buyer agrees to accept title to the lots pursuant to said deeds or assignments. Seller shall not be obligated or required to modify or change said deeds or assignments unless a correction is required to properly convey the interests being sold.

NOTICE OF CONFIDENTIALITY RIGHTS: IF YOU ARE A NATURAL PERSON, YOU MAY REMOVE OR STRIKE ANY OR ALL OF THE FOLLOWING INFORMATION FROM ANY INSTRUMENT THAT TRANSFERS AN INTEREST IN REAL PROPERTY BEFORE IT IS FILED FOR RECORD IN THE PUBLIC RECORDS: YOUR SOCIAL SECURITY NUMBER OR YOUR DRIVER'S LICENSE NUMBER.

MINERAL AND ROYALTY DEED

STATE OF TEXAS

§

§

KNOWN ALL MEN BY THESE PRESENTS:

COUNTY OF MARTIN

§

_____, whose address is _____ (“Grantor”), for One Hundred Dollars (\$100.00) and other good and valuable consideration, the receipt and sufficiency of which are hereby acknowledged, hereby GRANTS, SELLS, CONVEYS, and ASSIGNS unto

(“Grantee”), **10% of 100% as of November 1, 2025** of Grantor’s right, title, and interest in and to the oil, gas, and mineral interests, royalty interests and other interests in and to those certain lands (“Lands”) described below and located in Martin County, Texas:

**W/2 of Section 4, Block 36, T-3-N, T&P RR. Co. Survey, Martin County,
Texas, containing 320.5 acres, more or less;**

Grantor further excepts from this conveyance and reserves unto Grantor all of Grantor’s right, title, and interest in and to any after-acquired title, remainderman and reversionary interests.

This sale is made subject to all prior conveyances of mineral, royalty or wellbore interests of record, if any, and further subject to any rights now existing to any lessee or assigns under any valid and subsisting oil, gas, and mineral lease(s) of record heretofore executed; it being understood and agreed that said Grantee shall have, receive, and enjoy the herein-granted undivided interests in and to all royalties and other benefits which may accrue under the terms of said lease(s) insofar as the lease(s) covers the above-described interests from and after the Effective Date hereof.

Grantor agrees to execute such further assurances as may be necessary or requisite for the full and complete enjoyment of the rights herein granted. Grantor and Grantee agree to execute any Acts of Correction that may be necessary in the event the interests intended to be conveyed are not properly described.

TO HAVE AND TO HOLD the above-described interests and all other rights herein granted, all and singular, the rights and appurtenances thereto belonging or appertaining. The terms, covenants and conditions contained in this Mineral and Royalty Deed shall be binding upon the inure to the benefit of the parties and their respective heirs, successors and assigns.

Lot #

The interests conveyed herein are conveyed without warranty, express or implied, and all covenants that may arise under common law or the statutory implied covenants contained in Section 5.023 of the Texas Property Code are hereby disclaimed.

EXECUTED on the acknowledgment date below, but **EFFECTIVE** as of **December 1, 2025** (the “Effective Date”) and therefore Grantee is entitled to the interests conveyed hereby on and after the Effective Date, but not before. Notwithstanding the above, all ad valorem taxes and other property taxes attributable to the interests conveyed herein for the 2025 calendar year shall be the sole responsibility of Grantee. Grantee represents to Grantor that Grantee has taken into account the liability for such ad valorem taxes and property taxes in determining the consideration paid herein.

Grantor:

[REDACTED]

DIRECT ACKNOWLEDGEMENT

STATE OF NEW MEXICO
COUNTY OF SANTA FE

This instrument was acknowledged before me on this the ____ of _____, 2025, by [REDACTED]
[REDACTED]

IN WITNESS HEREOF, I have hereunto set my hand and official seal on the day and year first above written.

SEAL

Signature of Notary

Name of Notary