



ATASCOSA TX - EAGLE FORD-1 Producing Royalties

4 Producing Royalty Interest Wells

Located in ATASCOSA (TX)



ATASCOSA TX - EAGLE FORD-1 Producing Royalties

Property Summary

The assets in this package are located in the Eagle Ford Shale formation within Atascosa County, Texas. The Eagle Ford needs little introduction, being the largest oil and gas development in the world based on capital invested. The formation has redefined South Texas as a hotspot in the oil and gas industry with the formation supporting 116,000 local jobs and contributing \$60 billion to the local economy. Over the past 6 months, there have been 65 new permits filed in Atascosa County. Most of the development concerns new wells drilled in the Eagle Ford Shale. Ten of these permits were filed by the operator of the assets in this package, Marathon Oil.

Package Details

- 4 Producing Wells
 - 4 Horizontal
 - 0 Vertical
- Royalty Interest

Location

- ATASCOSA (TX)
- Formation(s)
 - EAGLE FORD-1

Production Breakdown

- 97.71% - Oil
- 0.97% - Gas
- 1.33% - NGL

Cash Flow

- \$73.09 Per Month
 - Cash Flow Represents 100.00% of Check Statements

Operator(s)

- EOG RESOURCES



ATASCOSA TX - EAGLE FORD-1 Producing Royalties

Package Contents

Check Revenue Statement
Check Statements
Maps
Production Graph
Source Assignments



ATASCOSA TX - EAGLE FORD-1 Producing Royalties

Check Revenue Statement



ATASCOSA TX - EAGLE FORD-1 Producing Royalties

Check Revenue Statement

Production Months

Operator	May-2019	Jun-2019	Jul-2019				Average
EOG RESOURCES, INC.	\$78.54	\$69.29	\$71.44				\$73.09
<i>* Cash flow reflects the sale of 100.00% of the assets shown on the check statements paid by EOG RESOURCES, INC. in this package.</i>							
Package Totals:	\$78.54	\$69.29	\$71.44				\$73.09

* Note: Blank boxes indicate no revenue data available for that month



ATASCOSA TX - EAGLE FORD-1 Producing Royalties

Check Statements

ANY APPLICABLE COMMENTS, PRODUCT TYPE, TAX CODE, DEDUCT CODE AND INTEREST TYPE CROSS REFERENCES ARE LOCATED AT THE END OF THIS DOCUMENT.

CHECK NO.: 0005619766									
OWNER NO.: 389241									
Page 3 of 4									
CHECK DATE 09/12/2019									
PROD DATE	PROD TYPE	QUANTITY	VALUE	TAX	TAX CODE	OTHER DEDUCTS	NET VALUE	PRICE	GROSS VALUE
CHAMCOIS UNIT # 1H									
07/19	41	141.96	310.17	7.62	SV	-7.62 TR	310.17	2.19	0.06
07/19	70	30.55	350.34	12.98	SV	-12.98 TP	350.34	11.47	0.06
PROPERTY 082553-000									
07/19	10	391.84	24506.30	2.45	CU		24503.85	63.82	4.73
07/19	10			1127.29	SV		-127.29		
07/19	32	2.64	133.85	6.16	SV		127.69	60.98	0.04
STATE-COUNTY: TX-ATASCOSA									
PROPERTY TOTAL									
07/19	41	228.23	488.65	12.24	SV	-12.24 TR	488.65	2.19	0.09
07/19	70	49.12	563.21	20.87	SV	-20.87 TP	563.21	11.47	0.11
CHAMCOIS UNIT # 2H									
07/19	10	521.85	32637.33	3.20	CU		32634.07	63.82	6.29
07/19	10			1501.32	SV		-1501.32		
07/19	32	4.25	215.19	9.90	SV		205.29	60.98	0.05
STATE-COUNTY: TX-ATASCOSA									
PROPERTY TOTAL									
07/19	11	11.00	687.96	31.74	SV		656.22	62.54	0.60
MUSKOGEE UNIT # 1H									
07/19	10	535.50	33491.03	3.35	CU		33487.68	63.95	30.09
07/19	10			1540.59	SV		-1540.59		
07/19	32	10.66	539.97	24.84	SV		515.13	62.02	0.58
STATE-COUNTY: TX-ATASCOSA									
PROPERTY TOTAL									
07/19	41	362.82	793.39	18.81	SV	-18.81 TR	793.39	2.19	0.70
07/19	41	14.97	38.66	2.90	SV		38.66	2.58	0.03
07/19	70	90.42	1176.61	53.27	SV	-53.27 TP	1176.61	13.04	1.03
STATE-COUNTY: TX-ATASCOSA									
PROPERTY TOTAL									
07/19	10	537.97	33645.50	3.36	CU		33642.14	63.95	30.24
07/19	10			1547.69	SV		-1547.69		
STATE-COUNTY: TX-ATASCOSA									
PROPERTY TOTAL									
PAYMENT TOTAL									
74.70									
3.37									
-1.11									
71.44									



ANN DENISE STEWART
3425 BEELER AVE
INDIANAPOLIS, IN 46224

ANY APPLICABLE COMMENTS, PRODUCT TYPE, TAX CODE, DEDUCT CODE AND INTEREST TYPE CROSS REFERENCES ARE LOCATED AT THE END OF THIS DOCUMENT.

CHECK NO.: 0005605941

OWNER NO.: 389241

CHECK DATE: 08/13/2019

Page 3 of 4

PROG DATE	PROG TYPE	QUANTITY BBLs/MCF	VALUE	TAX CODE	TAX CODE	OTHER DEDUCTS	DECK	INT TYPE	PRICE	GROSS VALUE	TAX	OTHER DEDUCTS	INT TYPE	SETTLEMENT INT	INT VALUE
CHAYOIS UNIT # 1H															
06/19	41	128.52	290.22	7.42 SV	PROPERTY 082553-000		DECK 1A	INT TYPE 2	2.26	2.26			0.00018910	0.00018910	0.00018910
06/19	70	27.40	320.64	12.14 SV			-7.42 TR -12.14 TP	290.22 320.64	11.70						
06/19	10	381.35	23180.75	2.38 CU			DECK 19	INT TYPE 2	60.79	60.79			0.00018910	0.00018910	0.00018910
06/19	10			1066.31 SV				23178.37							4.38
06/19	32	2.45	120.00	5.52 SV				-1066.31 114.48	59.31		.21				-21
STATE-COUNTY: TX-ATASCOSA															
PROPERTY TOTAL															
06/19	41	218.07	492.44	12.60 SV	PROPERTY 082562-000		DECK 1A	INT TYPE 2	2.26				0.00018910	0.00018910	0.00018910
06/19	41	8.12	21.92	1.64 SV			-12.60 TR	492.44							.10
06/19	70	48.49	544.09	20.59 SV			-20.59 TP	21.92 544.09	11.70		.01				.10
06/19	10	542.57	32980.68	3.39 CU			DECK 19	INT TYPE 2	60.79	6.23			0.00018910	0.00018910	0.00018910
06/19	10			1517.11 SV				32977.29	59.30		.29				6.23
06/19	32	4.16	203.61	9.37 SV				-1517.11 194.24							-29
STATE-COUNTY: TX-ATASCOSA															
PROPERTY TOTAL															
06/19	11	2.00	121.57	5.61 SV	PROPERTY 063403-000		DECK S1	INT TYPE 2	60.78				0.00087891	0.00087891	0.00087891
06/19	11							115.96			.01				.10
06/19	10	738.15	44869.21	4.61 CU			DECK 13	INT TYPE 2	60.79	39.44	.01		0.00087891	0.00087891	0.00087891
06/19	10			2063.98 SV				44864.60							39.43
06/19	32	6.69	327.32	15.06 SV				-2063.98 312.26	60.35		1.82				-1.82
06/19	41	224.34	506.85	12.70 SV			DECK 14	INT TYPE 2			.01		0.00087891	0.00087891	0.00087891
06/19	41	8.92	24.06	1.80 SV			-12.70 TR	506.85	2.26						.44
06/19	70	54.30	713.23	32.21 SV			-32.21 TP	24.06 713.23	13.14		.03				.03
STATE-COUNTY: TX-ATASCOSA															
PROPERTY TOTAL															
06/19	10	375.48	22823.94	2.35 CU	PROPERTY 084391-000		DECK 13	INT TYPE 2	62.24				0.00087891	0.00087891	0.00087891
06/19	10			1049.90 SV				22821.59			.01				20.54
STATE-COUNTY: TX-ATASCOSA															
PROPERTY TOTAL															
06/19	10							-1049.90			.93				-93
PAYMENT TOTAL															
										41.00	1.89				39.15
										20.55	.94				19.61
										72.55	3.36				69.25



ANN DENISE STEWART
3425 REELER AVE
INDIANAPOLIS, IN 46224

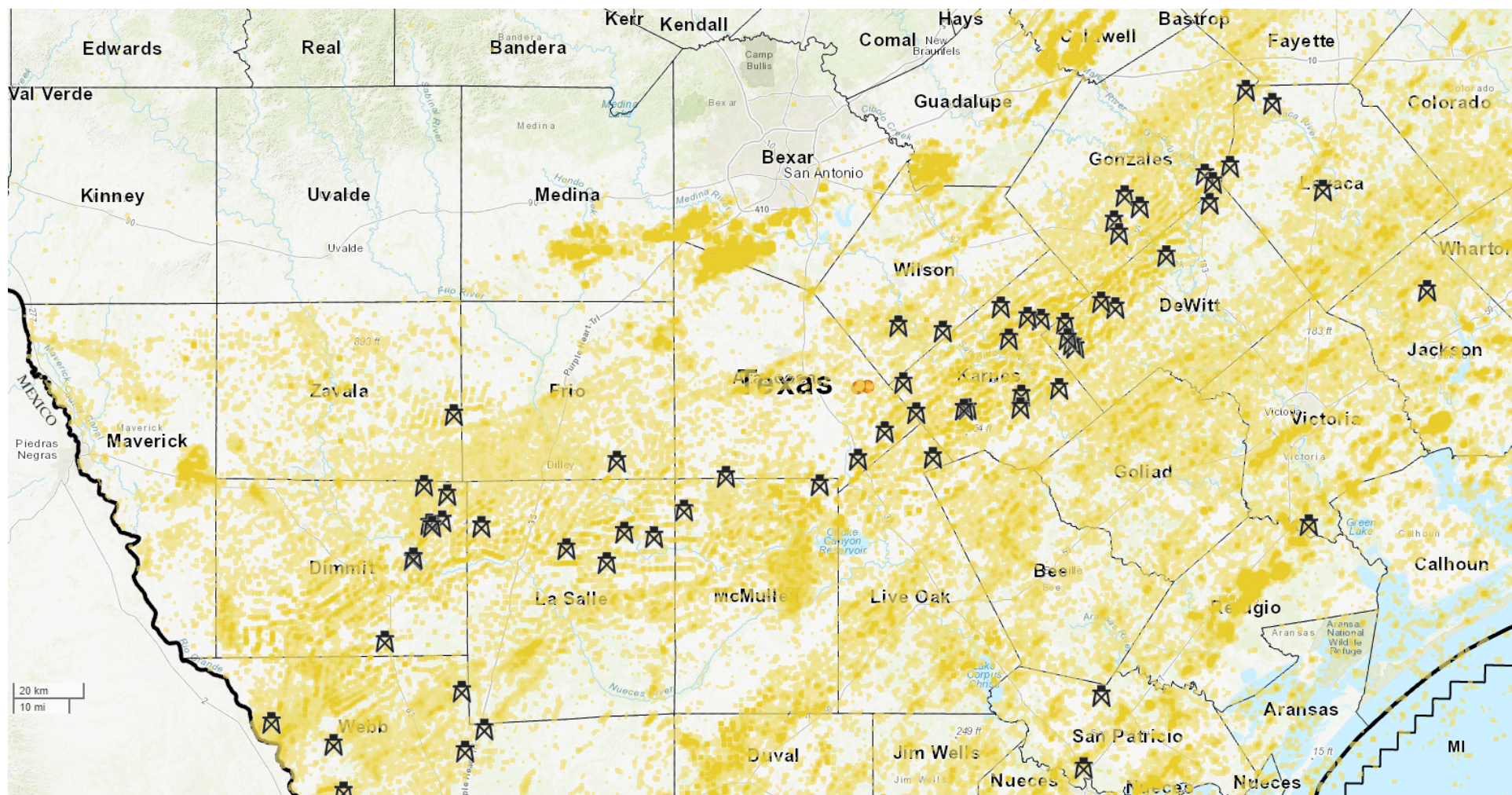
ANY APPLICABLE COMMENTS, PRODUCT TYPE, TAX CODE, DEDUCT CODE AND INTEREST TYPE CROSS REFERENCES ARE LOCATED AT THE END OF THIS DOCUMENT.

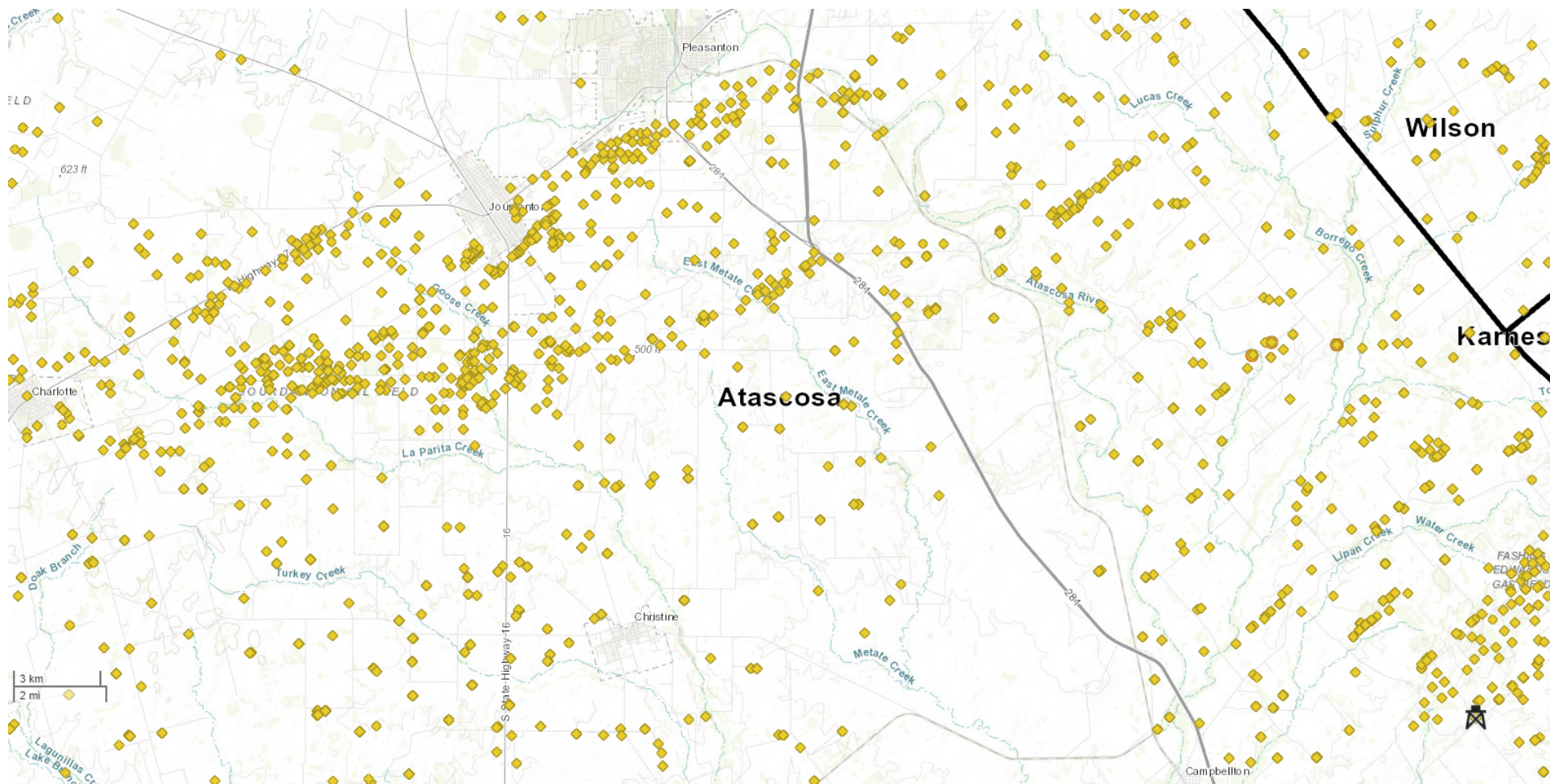
CHECK NO.: 0005582029										OWNER NO.: 388241										Page 3 of 4										CHECK DATE: 07 12 2019																																																																																																																																																																																																																																																																																																																																																																																																																																																																																																																																																																																																																																																																																																																																																																																																																																																																																																																																																																																																																																																																																																																																																																																																																																																																																																																																																																																																																																																																																																																																																																																																																																																																																																																																																																																																																																																																																																																																																																																																																																																																																																																																																																																																																																																																																																																																																																																																																																																																																																																																																																																																																																																																																																																																																																																																																																																																																																																																																																																																																																																																																																																																																																																																																																																																																																																																																																																																																																																																																																																																																																																																																																																																																																																																																																																																	
PROD DATE										PRCD TYPE										QUANTITY										BDLS/PCF										VALUE										TAX										TAX CODE										OTHER DEDUCT CODE										NET VALUE										PRICE										GROSS VALUE										TAX										OTHER DEDUCTS										SETTLEMENT INT										SETTLEMENT INT										HET VALUE																																																																																																																																																																																																																																																																																																																																																																																																																																																																																																																																																																																																																																																																																																																																																																																																																																																																																																																																																																																																																																																																																																																																																																																																																																																																																																																																																																																																																																																																																																																																																																																																																																																																																																																																																																																																																																																																																																																																																																																																																																																																																																																																																																																																																																																																																																																																																																																																																																																																																																																																																																																																																																																																																																																																																																																																																																																																																																																																																																																																																																																																																																																																																																																																																																																																																																																																																																																																																																																																																																																																																																																																																																																																									
CHAY/OIS UNIT # 1H										1.00										65.26										PROPERTY 082553-000										DECK 13										INT TYPE 2										62.25										65.26										OWNER INT										C.00018910										SETTLEMENT INT										0.00018910										0.00018910										0.00018910										0.00018910										0.00018910										0.00018910										0.00018910										0.00018910										0.00018910										0.00018910										0.00018910										0.00018910										0.00018910										0.00018910										0.00018910										0.00018910										0.00018910										0.00018910										0.00018910										0.00018910										0.00018910										0.00018910										0.00018910										0.00018910										0.00018910										0.00018910										0.00018910										0.00018910										0.00018910										0.00018910										0.00018910										0.00018910										0.00018910										0.00018910										0.00018910										0.00018910										0.00018910										0.00018910										0.00018910										0.00018910										0.00018910										0.00018910										0.00018910										0.00018910										0.00018910										0.00018910										0.00018910										0.00018910										0.00018910										0.00018910										0.00018910										0.00018910										0.00018910										0.00018910										0.00018910										0.00018910										0.00018910										0.00018910										0.00018910										0.00018910										0.00018910										0.00018910										0.00018910										0.00018910										0.00018910										0.00018910										0.00018910										0.00018910										0.00018910										0.00018910										0.00018910										0.00018910										0.00018910										0.00018910										0.00018910										0.00018910										0.00018910										0.00018910										0.00018910										0.00018910										0.00018910										0.00018910										0.00018910										0.00018910										0.00018910										0.00018910										0.00018910										0.00018910										0.00018910										0.00018910										0.00018910										0.00018910										0.00018910										0.00018910										0.00018910										0.00018910										0.00018910										0.00018910										0.00018910										0.00018910										0.00018910										0.00018910										0.00018910										0.00018910										0.00018910										0.00018910										0.00018910										0.00018910										0.00018910										0.00018910										0.00018910										0.00018910										0.00018910										0.00018910										0.00018910										0.00018910										0.00018910										0.00018910										0.00018910										0.00018910										0.00018910										0.00018910										0.00018910										0.00018910										0.00018910										0.00018910										0.00018910										0.00018910										0.00018910										0.00018910										0.00018910										0.00018910										0.00018910										0.00018910										0.00018910										0.00018910										0.00018910										0.00018910										0.00018910										0.00018910										0.00018910										0.00018910										0.00018910										0.00018910										0.00018910										0.00018910										0.00018910										0.00018910										0.00018910										0.00018910										0.00018910										0.00018910										0.00018910										0.00018910										0.00018910										0.00018910										0.00018910										0.00018910										0.00018910										0.00018910										0.00018910										0.00018910										0.00018910										0.00018910										0.00018910										0.00018910										0.00018910										0.00018910										0.00018910										0.00018910										0.00018910										0.00018910										0.00018910										0.00018910										0.00018910										0.00018910										0.00018910										0.00018910										0.00018910										0.00018910										0.00018910										0.00018910										0.00018910										0.00018910										0.00018910										0.00018910										0.00018910										0.00018910										0.00018910										0.00018910										0.00018910										0.00018910										0.00018910										0.00018910										0.00018910										0.00018910										0.00018910										0.00018910										0.00018910										0.00018910										0.00018910										0.00018910										0.00018910										0.00018910										0.00018910										0.00018910										0.00018910										0.00018910										0.00018910										0.00018910										0.00018910										0.00018910										0.00018910										0.00018910										0.00018910										0.00018910										0.00018910										0.00018910										0.00018910										0.00018910										0.00018910										0.00018910										0.00018910										0.00018910										0.00018910										0.00018910										0.00018910										0.00018910										0.00018910										0.00018910										0.00018910										0.00018910										0.00018910										0.00018910										0.00018910										0.00018910										0.00018910										0.00018910										0.00018910										0.00018910										0.00018910										0.00018910										0.00018910										0.00018910										0.00018910										0.00018910										0.00018910										0.00018910										0.00018910										0.00018910										0.00018910										0.00018910										0.00018910										0.00018910										0.00018910										0.00018910										0.00018910										0.00018910										0.00018910										0.00018910										0.00018910										0.00018910										0.00018910										0.00018910										0.00018910										0.00018910										0.00018910										0.00018910										0.00018910										0.00018910										0.00018910										0.00018910										0.00018910										0.00018910										0.00018910										0.00018910										0.00018910										0.00018910										0.00018910										0.00018910										0.00018910										0.00018910										0.00018910										0.00018910										0.00018910										0.00018910										0.00018910										0.00018910										0.00018910										0.00018910										0.00018910										0.00018910										0.00018910										0.00018910										0.00018910										0.00018910										0.00018910										0.00018910										0.00018910										0.00018910										0.00018910										0.00018910										0.00018910										0.00018910										0.00018910										0.00018910										0.00018910										0.00018910										0.00018910										0.00018910										0.00018910										0.00018910										0.00018910										0.00018910										0.00018910										0.00018910										0.00018910										0.00018910										0.00018910										0.00018910										0.00018910										0.00018910										0.00018910										0.00018910										0.00018910										0.00018910										0.00018910										0.00018910										0.00018910										0.00018910										0.00018910										0.00018910										0.00018910										0.00018910										0.00018910										0.00018910										0.00018910										0.00018910										0.00018910										0.00018910										0.00018910										0.00018910										0.00018910										0.00018910										0.00018910										0.00018910										0.00018910										0.00018910										0.00018910										0.00018910										0.00018910										0.00018910										0.00018910										0.00018910										0.00018910										0.00018910										0.00018910									

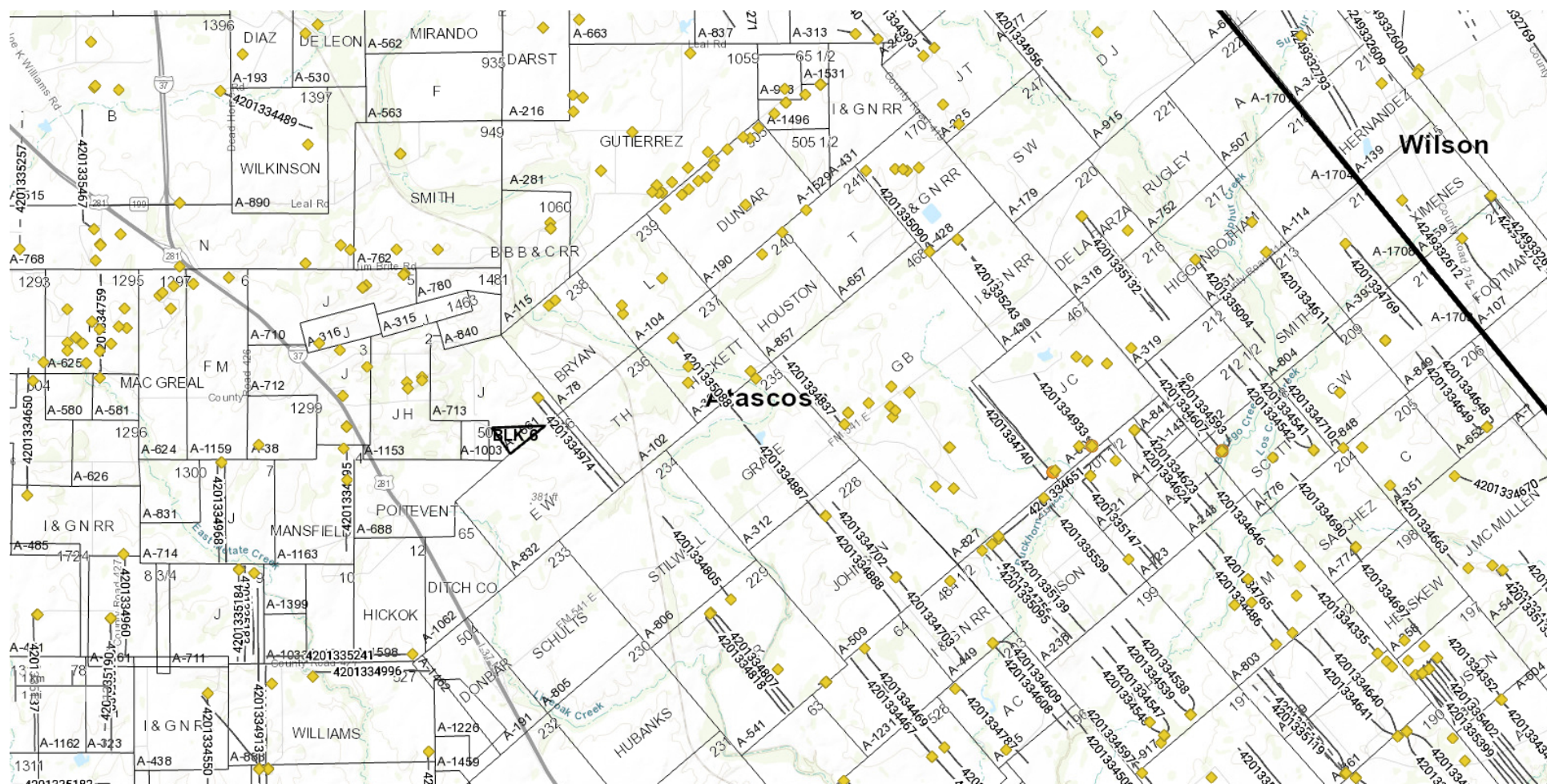


ATASCOSA TX - EAGLE FORD-1 Producing Royalties

Maps





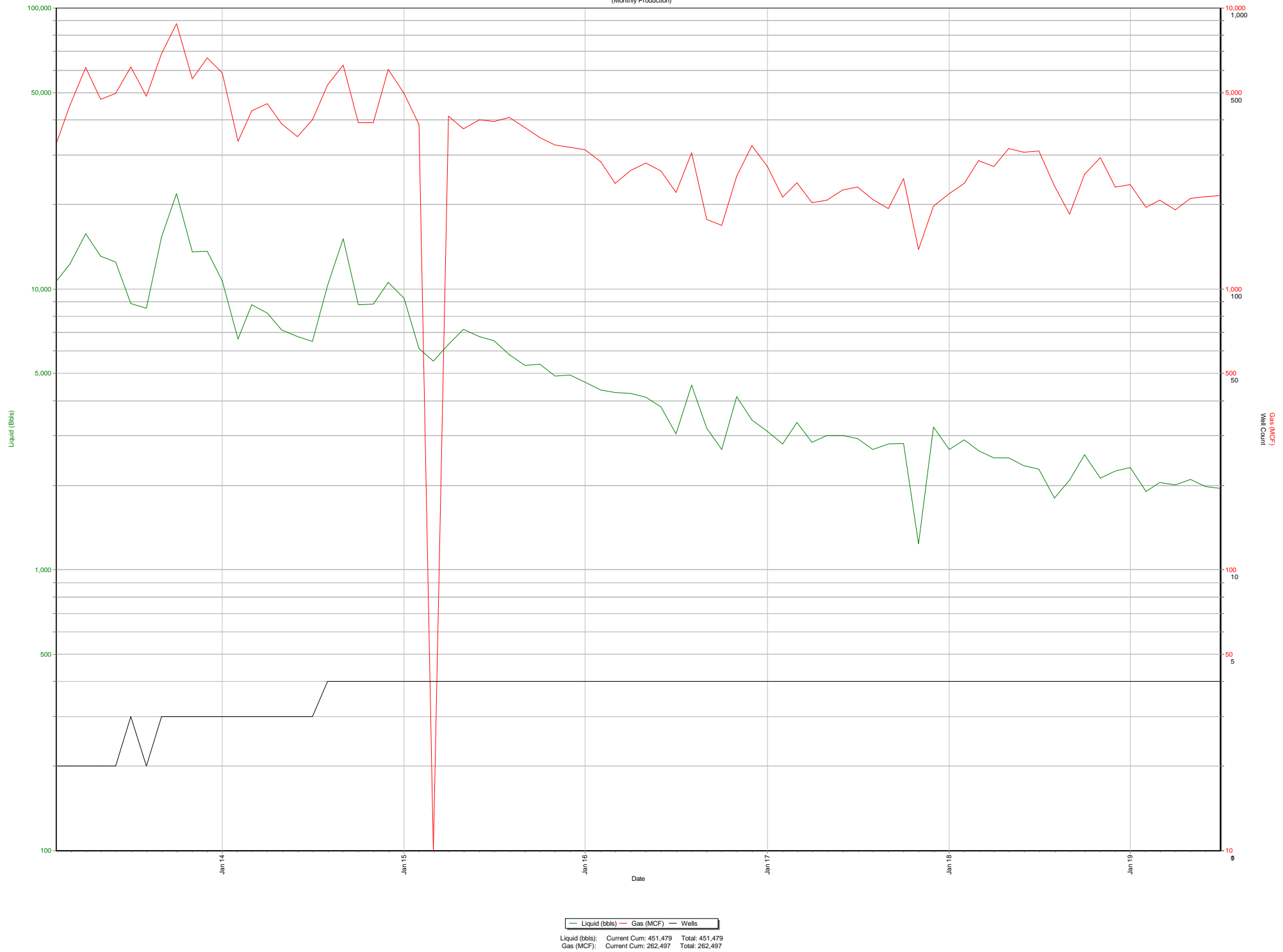




ATASCOSA TX - EAGLE FORD-1 Producing Royalties

Production Graph

Summary page selections
(Monthly Production)



— Liquid (bbls) — Gas (MCF) — Wells

Liquid (bbls):	Current Cum: 451,479	Total: 451,479
Gas (MCF):	Current Cum: 262,497	Total: 262,497



ATASCOSA TX - EAGLE FORD-1 Producing Royalties

Source Assignments



OIL, GAS, MINERAL AND ROYALTY CONVEYANCE

For valuable consideration, the receipt of which is acknowledged, Ann Denise Stewart, whose address is 2425 Beeler Ave, Indianapolis, IN 46224 (hereinafter referred to as "Grantor"), does hereby bargain, sell, transfer, assign, and convey 100.0000% of Grantor's interests in all oil, gas, mineral, royalty, overriding royalty, net profits, and other similar interests in the lands of Atascosa County, TX as described in Exhibit "A" unto the following Grantee(s), its/their successors and assigns:

Oak Tree Minerals, LLC
2601 Network Blvd. Suite 404
Frisco, TX 75034

This conveyance is effective as of October 1, 2019 and includes all executive rights, bonuses, and delay rentals applicable to Grantor's interest conveyed herein.

Grantor agrees to pay any ad valorem taxes due on the interests herein conveyed prior to effective date. All ad valorem taxes attributable to the interests herein conveyed for after the effective date are the responsibility of Grantee(s), its/their successors or assigns.

Grantor warrants and agrees to defend the title to the interest herein conveyed against the lawful claims and demands of all parties claiming or to claim the same, or any part thereof, by, through or under Grantor, but not otherwise.

Ann Denise Stewart

State of Indiana §
County of Marion §

By: Ann Denise Stewart
Ann Denise Stewart
Owner

This instrument was acknowledged before me on September 25th, 2019 by Ann Denise Stewart.



(notary seal here)

Pamela Marie Miceli
Notary Public - State of Indiana
County of Residence: Marion
Commission Number: 683899
My Commission Expires: 04-19-2024

Notary Signature: Pamela Marie Miceli

Notary Name: Pamela Marie Miceli

My Commission Expires: 04-19-2024

Return To:

OAK TREE MINERALS, LLC.
2601 Network Boulevard, Suite 404
Frisco, TX 75034

Prepared By:

Derik J. Todd
Oak Tree Minerals, LLC.

It is the Grantor's absolute intent to convey 100.0000% percent of the overriding royalty interests, non-producing royalty interests, term royalty and mineral interests, fee mineral interests, and oil, gas, or other mineral royalty interests in the lands of Atascosa County, TX, whether properly described below or not.

EXHIBIT "A"

Legal Description

929.86 acres of land, more or less, out of the Jared C Mattison Survey, No. 467, A-606, G.B. Tanksely Survey, No. 468, A-827, and International & Great Northern Rail Road Company Survey, No. 1700, A-430. 640.47 acre pooled unit located in J.C. Mattison Survey, A-606, the W.G. Cannon Survey, A-166, the T. Toby Survey, A-862, the G. Train Survey, A-841, the S.S. Smith Survey, A-1439, the J. Humphres Survey, A-1416, the J.C. McKean Survey, A-555, and G.W. Thomas Survey, A-848.

END OF EXHIBIT "A"

Return To:

OAK TREE MINERALS, LLC.
2601 Network Boulevard, Suite 404
Frisco, TX 75034

Prepared By:

Derik J. Todd
Oak Tree Minerals, LLC.

**FILED AND RECORDED
OFFICIAL PUBLIC RECORDS**



Diane Gonzales, County Clerk

Atascosa County Texas

October 09, 2019 09:29:07 AM

FEE: \$30.00

LCASTANEDA

199394

MRC